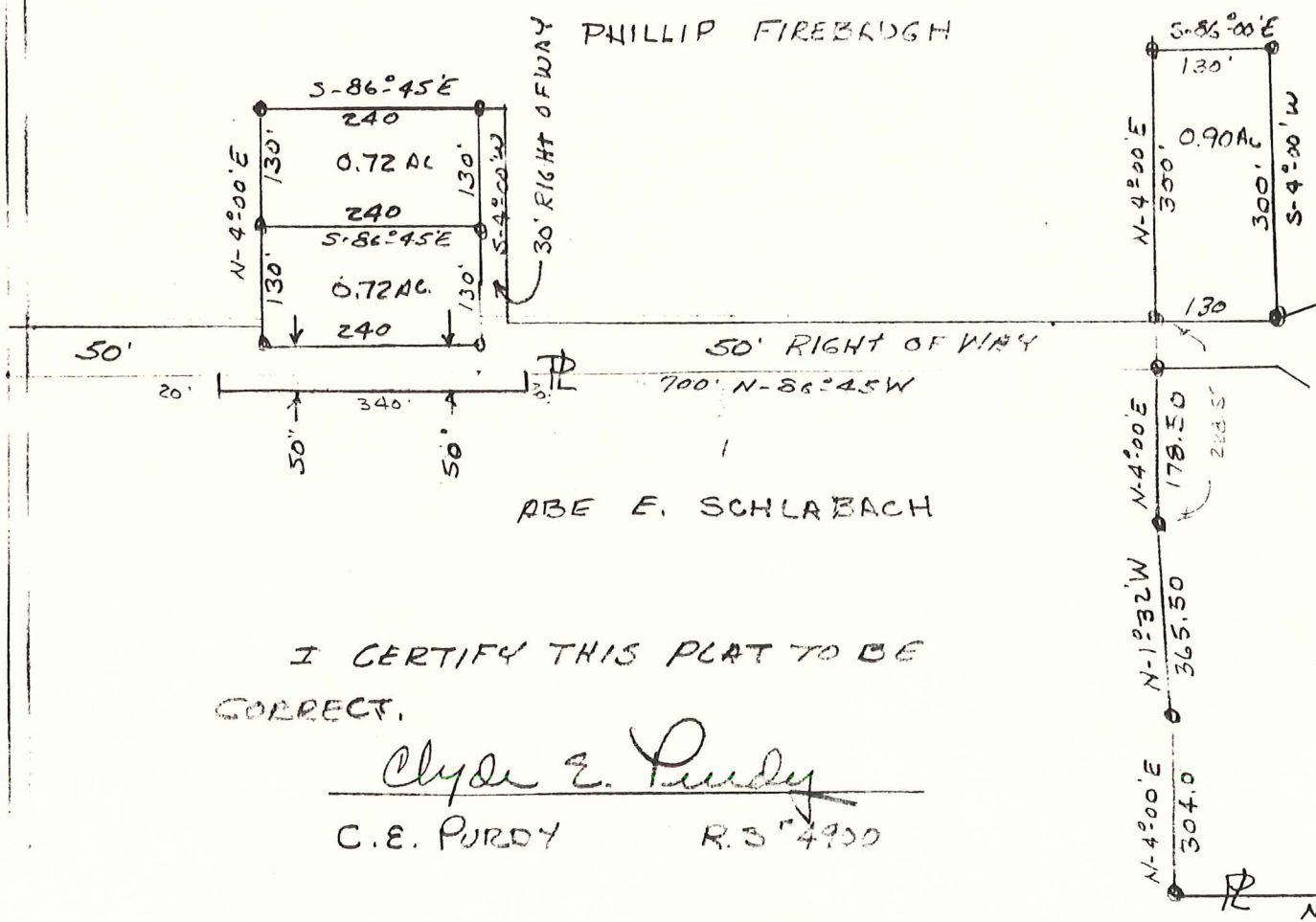


PRAIRIE TOWNSHIP
 N.E. QTR. SEC. 32
 TWP. 14 RANGE 13
 HOLMES COUNTY
 OHIO

ANDY MAST

T.R. #323



SCALE 1"=200'
 ● IRON PINS

I CERTIFY THIS PLAT TO BE
 CORRECT.

Clyde E. Purdy
 C.E. PURDY R.S. #4900

S.E. COR
 N.E. QTR
 SEC 32