

**Prairie Township**  
**N.E. Qtr. Section 32**  
**T-14 N; R-13 W**  
**Holmes County, Ohio**

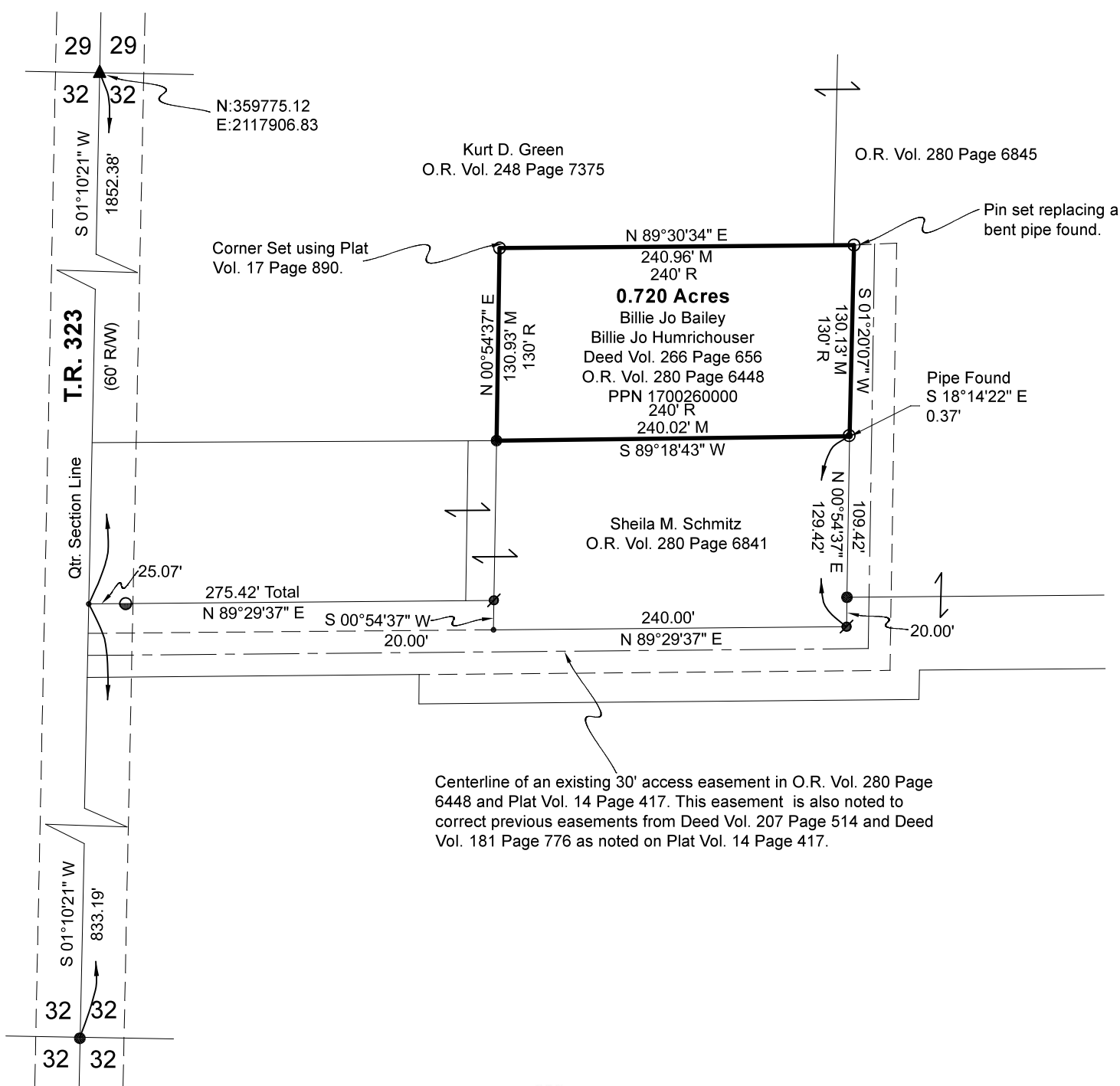
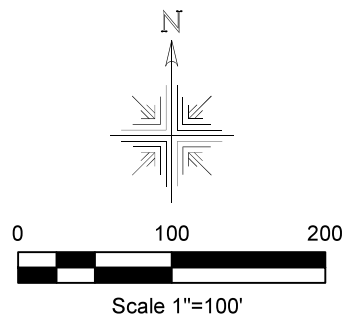
SURVEYED FOR: Tina Owens

REFERENCES:

- Deeds as shown
- Plat Vol. 17 Page 890
- Plat Vol. 5 Page 78
- Plat Vol. 14 Page 485
- Plat Vol. 17 Page 891
- Plat Vol. 16 Page 630
- Plat Vol. 14 Page 417

Basis of Bearing: Grid North, Ohio State Plane  
 Coordinate System Ohio North Zone, NAD 83  
 (2011). Distances shown hereon are ground  
 distances. To obtain grid distances multiply  
 distances by scale factor of 0.99992599

- ⊙ 1/2" Pipe Found
- 5/8" Rebar Found unless noted
- ⊘ 5/8" Capped Pin Found "Shamp"
- 5/8" Capped Pin Set "Galbraith-8703"
- ⊖ 5/8" Capped Pin Found "Baker"
- ▲ R.R. Spk. Found
- Point



Pioneer Surveying & Services, LLC.  
 5434 Township Road 377  
 Millerburg, Ohio 44654  
 Phone: 330-231-0497  
 Email: caleb@pioneersurveyingandservices.com

I certify this survey to be correct to the best of  
 my knowledge

Caleb Jerome Galbraith P.S. 8703  
 Date: June 14, 2024  
 Job ID: 8924

