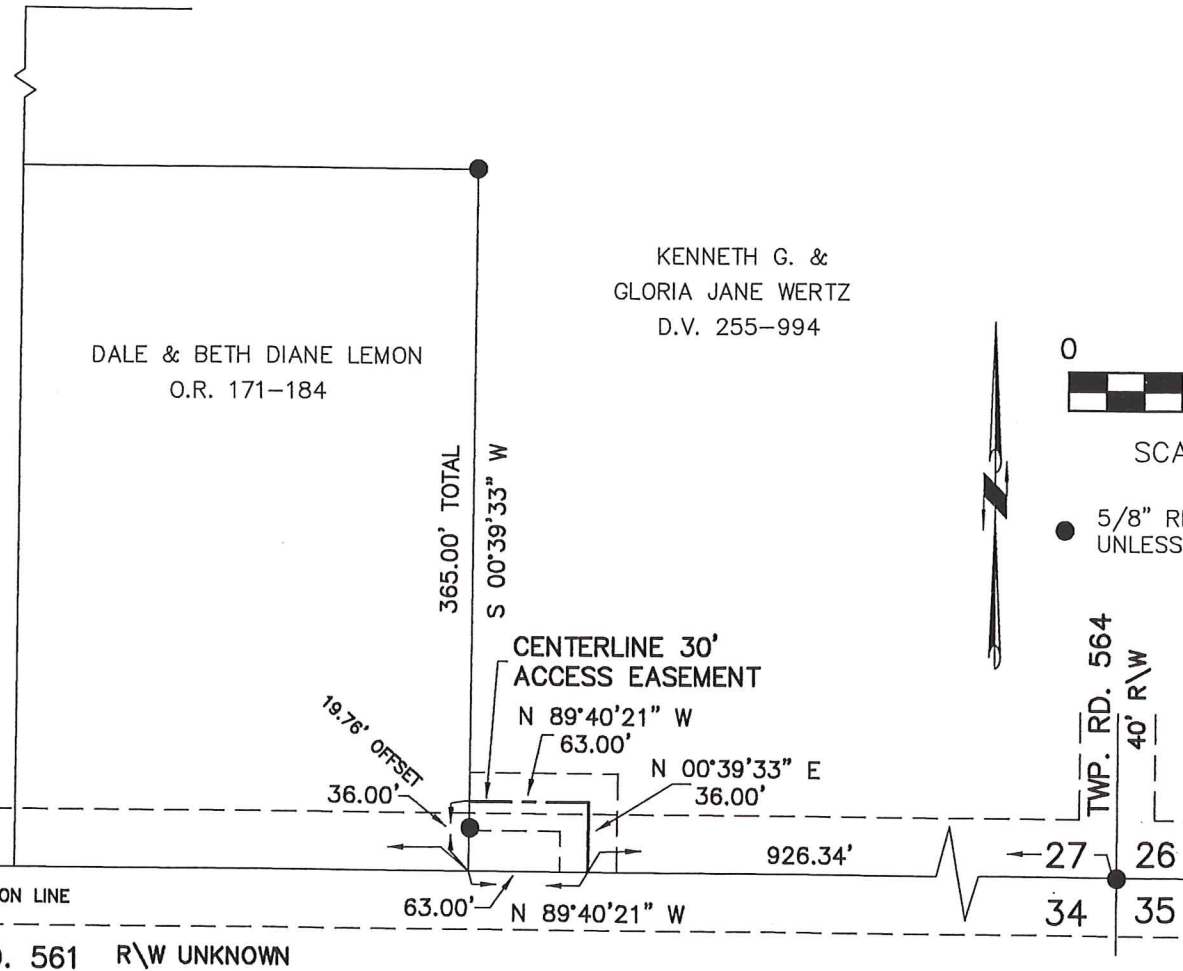


SURVEY of a 30' ACCESS EASEMENT

PRAIRIE TOWNSHIP
 S.E. QTR. SECTION 27
 T-14 N; R-13 W
 HOLMES COUNTY, OHIO

SURVEYED FOR: DALE LEMON

- REFERENCES
- DEED VOL. 255 PAGE 994
 - O.R. VOL. 171 PAGE 184
 - PLAT VOL. 12 PAGE 926
 - PLAT VOL. 19 PAGE 26
 - BEARINGS FROM PLAT VOL 19 PAGE 26



RECEIVED
 MAY 14 2004
 Hol. Co. Tax Map Office



SCALE: 1"=100'

● 5/8" REBAR FOUND
 UNLESS OTHERWISE NOTED



DONALD C. BAKER SURVEYING
 138 N. CLAY ST.
 MILLERSBURG, OHIO, 44654
 PH. 330-674-4788
 FAX. 330-674-6027

I CERTIFY THIS SURVEY TO BE CORRECT
 TO THE BEST OF MY KNOWLEDGE.

Donald C. Baker

DONALD C. BAKER P.S. 6938

DATE: MAY 12, 2004

FDB\AEG
 File Name: WORK2\S-71A-04\ERZ