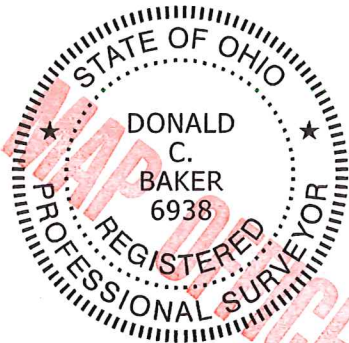


PRAIRIE TOWNSHIP
 S.W. QTR. SECTION 25
 S.E. QTR. SECTION 26
 T-14 N; R-13 W
 HOLMES COUNTY, OHIO

SURVEYED FOR: JOHNNY MILLER, JR.

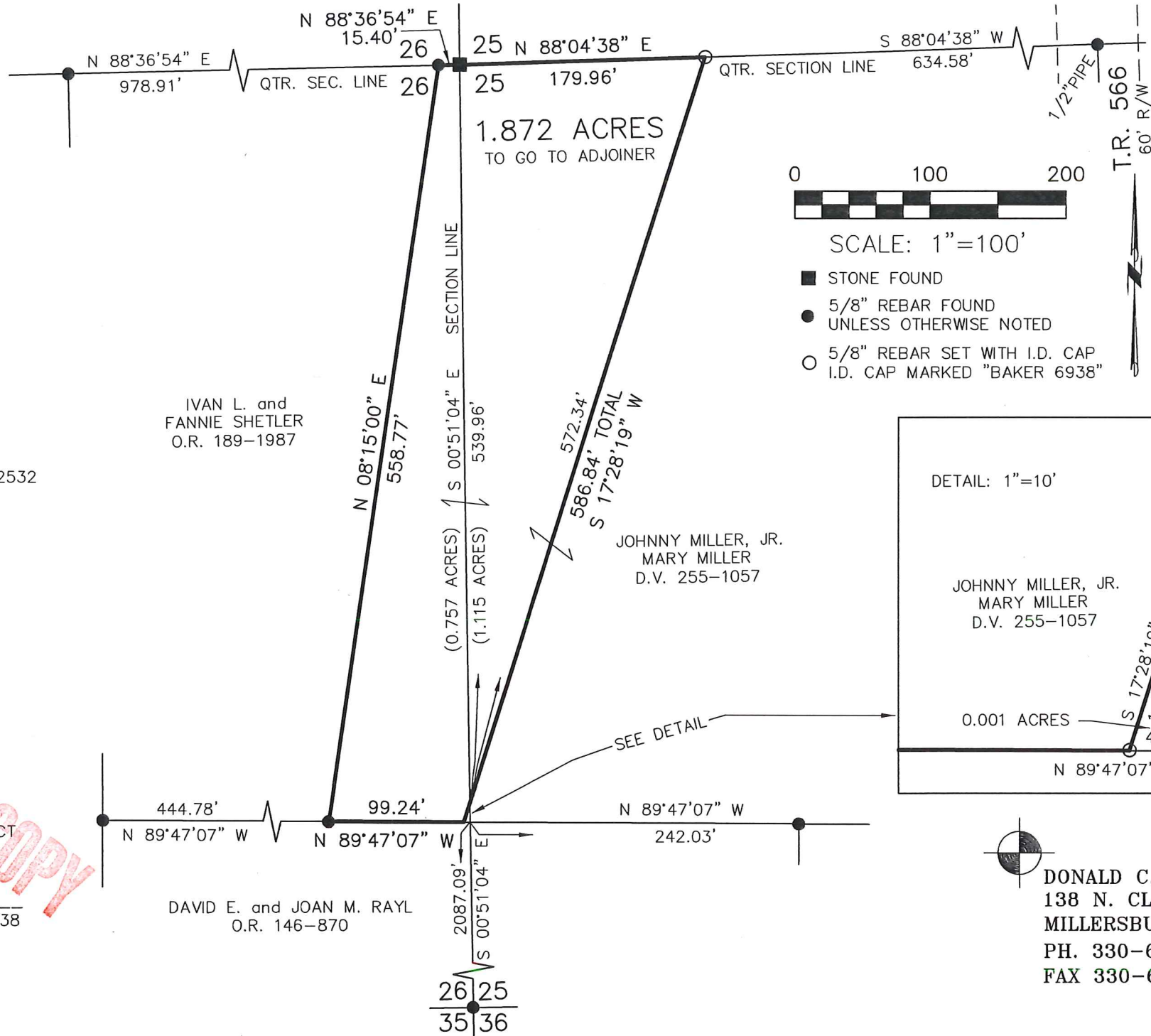
REFERENCES

- DEED VOL. 255 PAGE 1057
- O.R. VOL. 189 PAGE 1987
- PLAT VOL. 12 PAGE 972
- PLAT VOL. 14 PAGE 533
- PLAT VOL. 17 PAGE 373
- PLAT VOL. 19 PAGE 200
- PLAT VOL. 19 PAGE 1224
- PLAT VOL. 19 PAGE 2532
- BEARINGS FROM PLAT VOL. 19 PAGE 2532

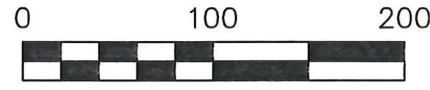


I CERTIFY THIS SURVEY TO BE CORRECT
 TO THE BEST OF MY KNOWLEDGE.

 DONALD C. BAKER P.S. 6938
 DATE: NOVEMBER 24, 2015
 KES\JPD
 FILE NAME: WORK4\S-634-15\ALG

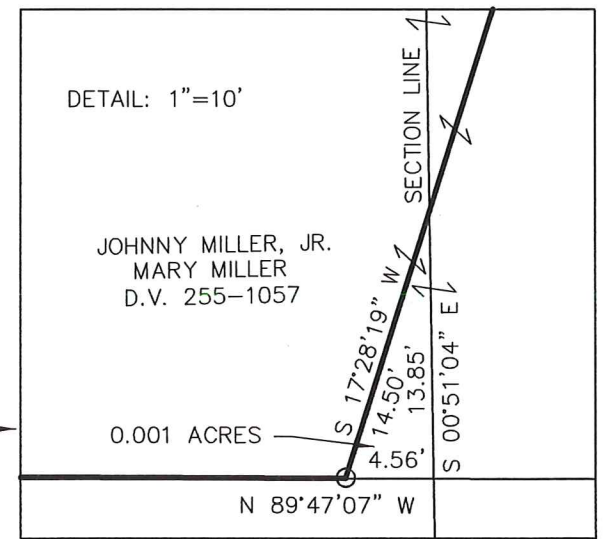


DEC 7 '15 AM 10:38



SCALE: 1"=100'

- STONE FOUND
- 5/8" REBAR FOUND UNLESS OTHERWISE NOTED
- 5/8" REBAR SET WITH I.D. CAP I.D. CAP MARKED "BAKER 6938"



DONALD C. BAKER SURVEYING
 138 N. CLAY STREET
 MILLERSBURG, OHIO 44654
 PH. 330-674-4788
 FAX 330-674-6027