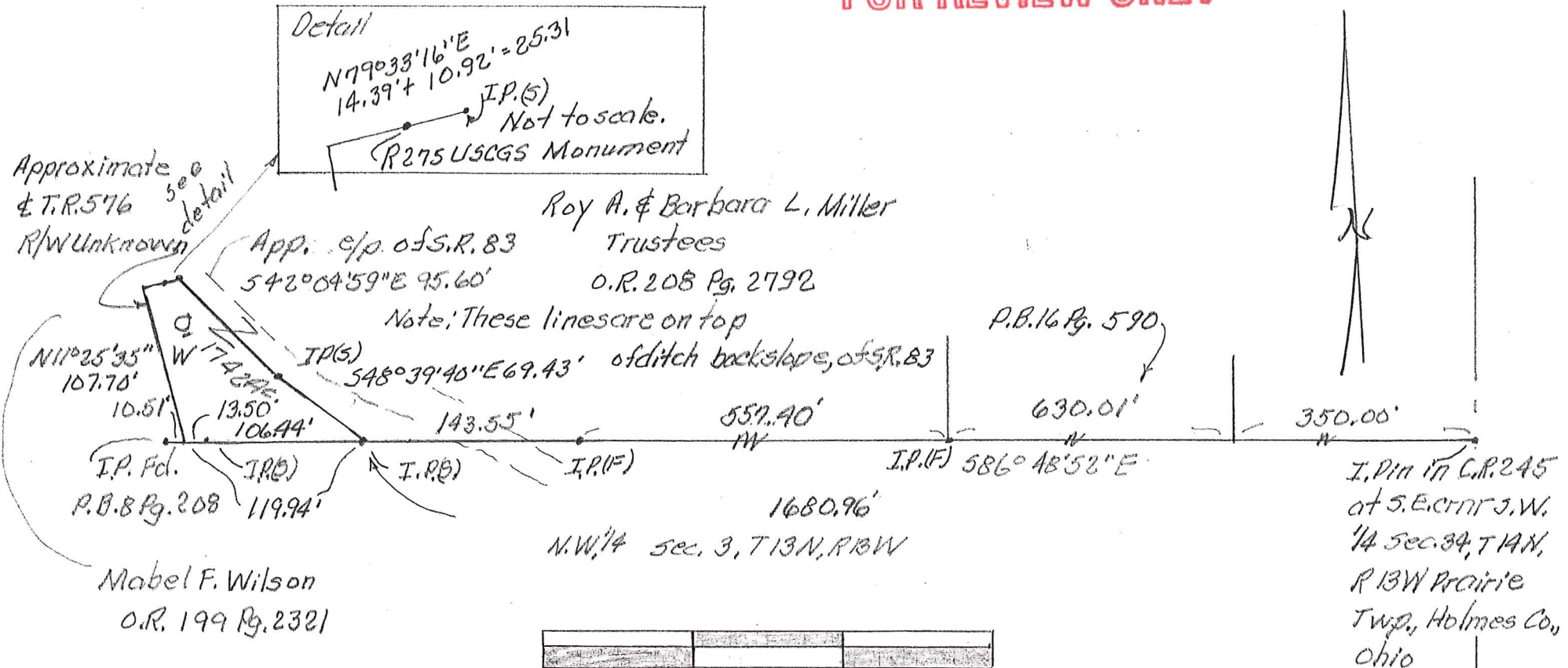


# PRELIMINARY FOR REVIEW ONLY



Scale: 1" = 100'

Bearing basis: P.B. 16 Pg. 590  
 Data used: P.B. 16 Pg. 590  
 P.B. 7 Pg. 763  
 P.B. 12 Pg. 779  
 P.B. 8 Pg. 208  
 O.R. 208 Pg. 2792

All set iron pins are 5/8" x 30" rebar  
 I.P. cop RLK 5193



Plat of a survey for  
 Martin Lemon in S.W.  
 1/4 Sec. 34, T14N, R13W  
 Prairie Twp., Holmes Co., Ohio.  
 Robert L. Kasner P.E.P.S.  
 7007 S.R. 39  
 Millersburg, Ohio 44654  
 330 674 9146  
 5/09/09

Robert L. Kasner P.E.P.S.