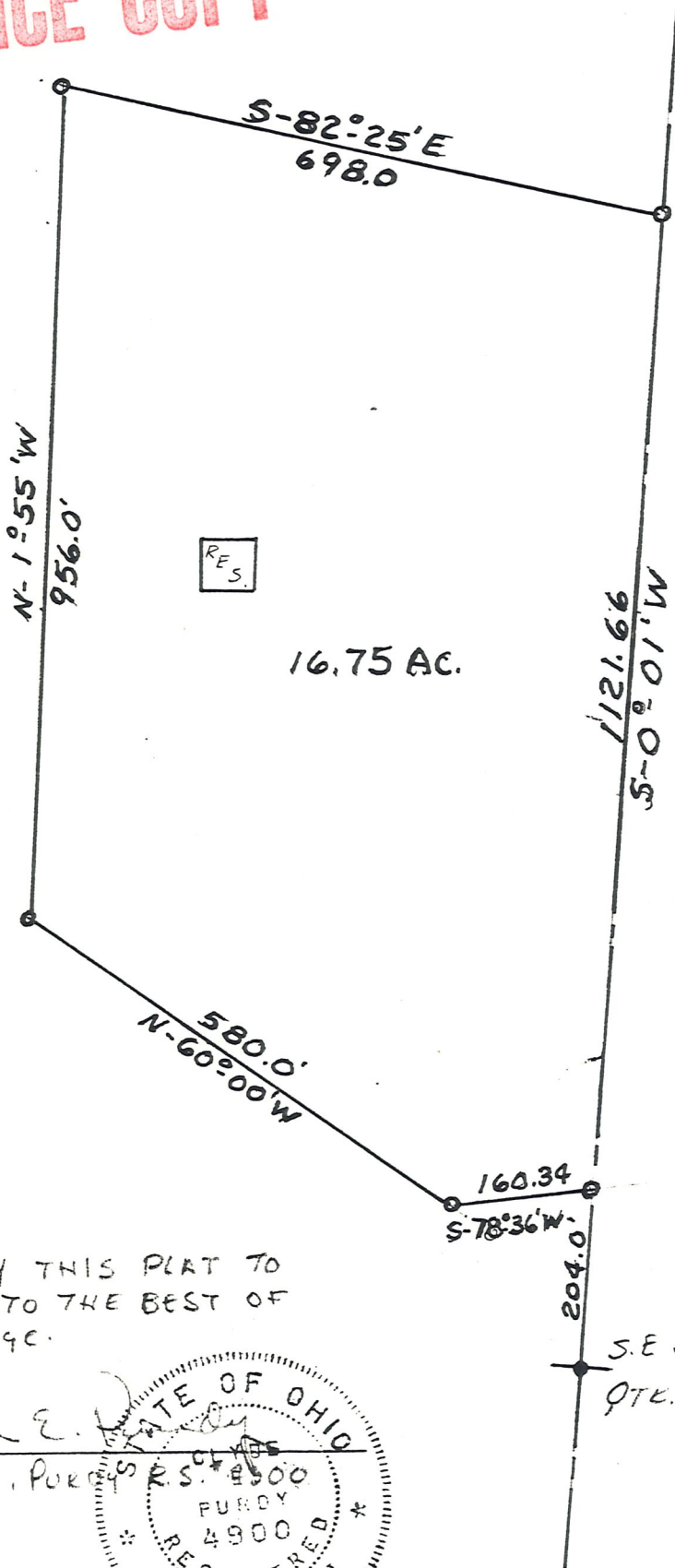


MAP OFFICE COPY



PRAIRIE TOWNSHIP
N.W. QTR. SEC. 17
TWP. 13-N RANGE 13 W
HOLMES COUNTY
OHIO

MAY 1968

SURVEY FOR
IVAN LONG

SCALE 1" = 200'

• I.P. FOUND
◊ I.P. SET

I CERTIFY THIS PLAT TO
BE CORRECT TO THE BEST OF
MY KNOWLEDGE.

Clyde E. Purdy
 CLYDE E. PURDY
 R.S. 4900
 PURDY
 4900
 REGISTERED
 SURVEYOR
 STATE OF OHIO

S.E. COR N.W.
QTR. SEC. 17