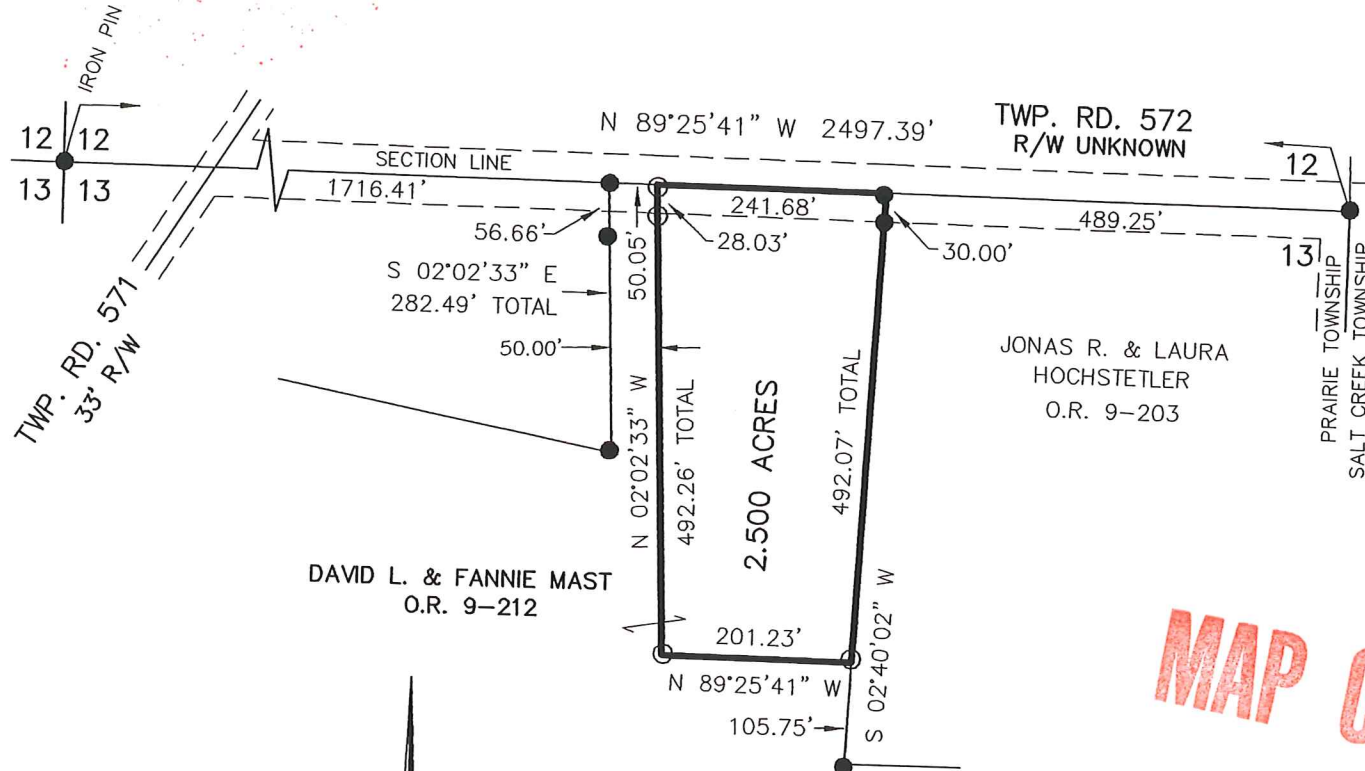


PRAIRIE TOWNSHIP
 N.E. QTR. SECTION 13
 T-13 N; R-13 W
 HOLMES COUNTY, OHIO

SURVEYED FOR: JONAS HOCHSTETLER

REFERENCES:

O.R. VOL. 9 PAGES 203 & 212
 PLAT VOL. 16 PAGE 729
 PLAT VOL. 18 PAGE 250
 BEARINGS FROM PLAT VOL. 16 PAGE 729



REBAR FOUND

RECEIVED
 JUN 02 2004
 Hol. Co. Tax Map Office

MAP OFFICE COPY

DONALD C. BAKER SURVEYING
 138 N. CLAY ST.
 MILLERSBURG, OH 44654
 PH. 330-674-4788
 FAX: 330-674-6027



- 5/8" REBAR FOUND
UNLESS OTHERWISE NOTED
- 5/8" REBAR WITH I.D. CAP SET
I.D. CAP MARKED "BAKER 6938"

I CERTIFY THIS SURVEY TO BE CORRECT
 TO THE BEST OF MY KNOWLEDGE.
Donald C Baker
 DONALD C. BAKER PS 6938
 DATE: JUNE 1, 2004
 FDB\AEG
 File Name: C:\WORK\S-356-04\ERZ