

SCALE: 1" = 200'

○ 5/8" REBAR WITH I.D. CAP  
SET. I.D. CAP MARKED  
"BAKER 6938."

● IRON PIN FOUND

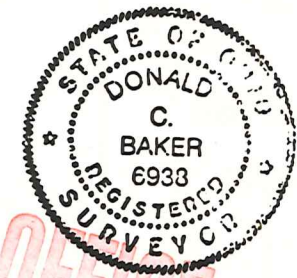
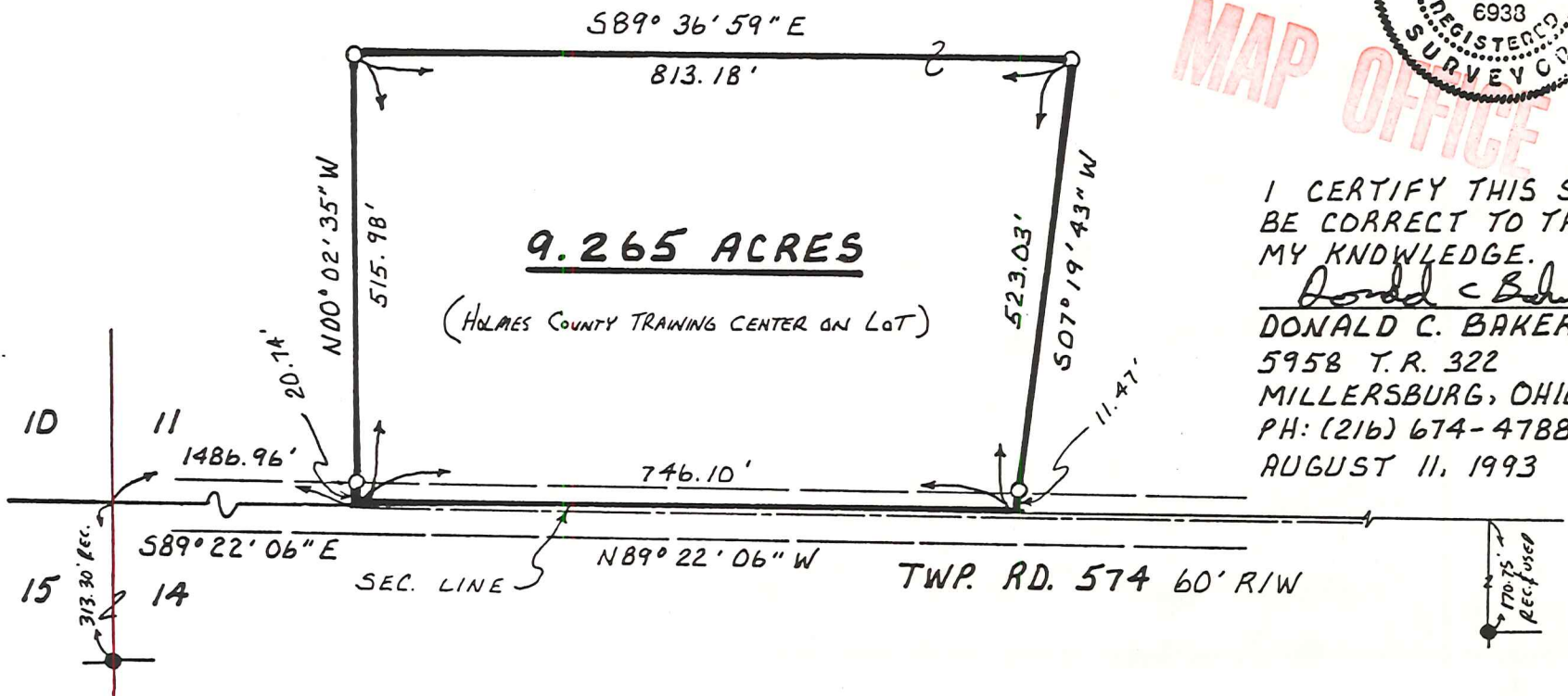
PRAIRIE TOWNSHIP  
S.W. QTR. SECTION 11  
T-13N ; R-13W  
HOLMES COUNTY, OHIO



REFERENCES:  
DEED VOL. 28 PAGE 226

PLAT VOL. 10 PAGE 677  
PLAT VOL. 8 PAGE 397  
PLAT VOL. 7 PAGE 565  
BEARINGS FROM PLAT VOL. 8 PAGE 515

HOLMES COUNTY (A.K.A. COUNTY HOME)  
28-226



MAP OFFICE COPY

I CERTIFY THIS SURVEY TO  
BE CORRECT TO THE BEST OF  
MY KNOWLEDGE.

*Donald C. Baker*  
DONALD C. BAKER P.S. 6938  
5958 T.R. 322  
MILLERSBURG, OHIO 44654  
PH: (216) 674-4788  
AUGUST 11, 1993

38193-BEC

170.75'  
Rec'd used