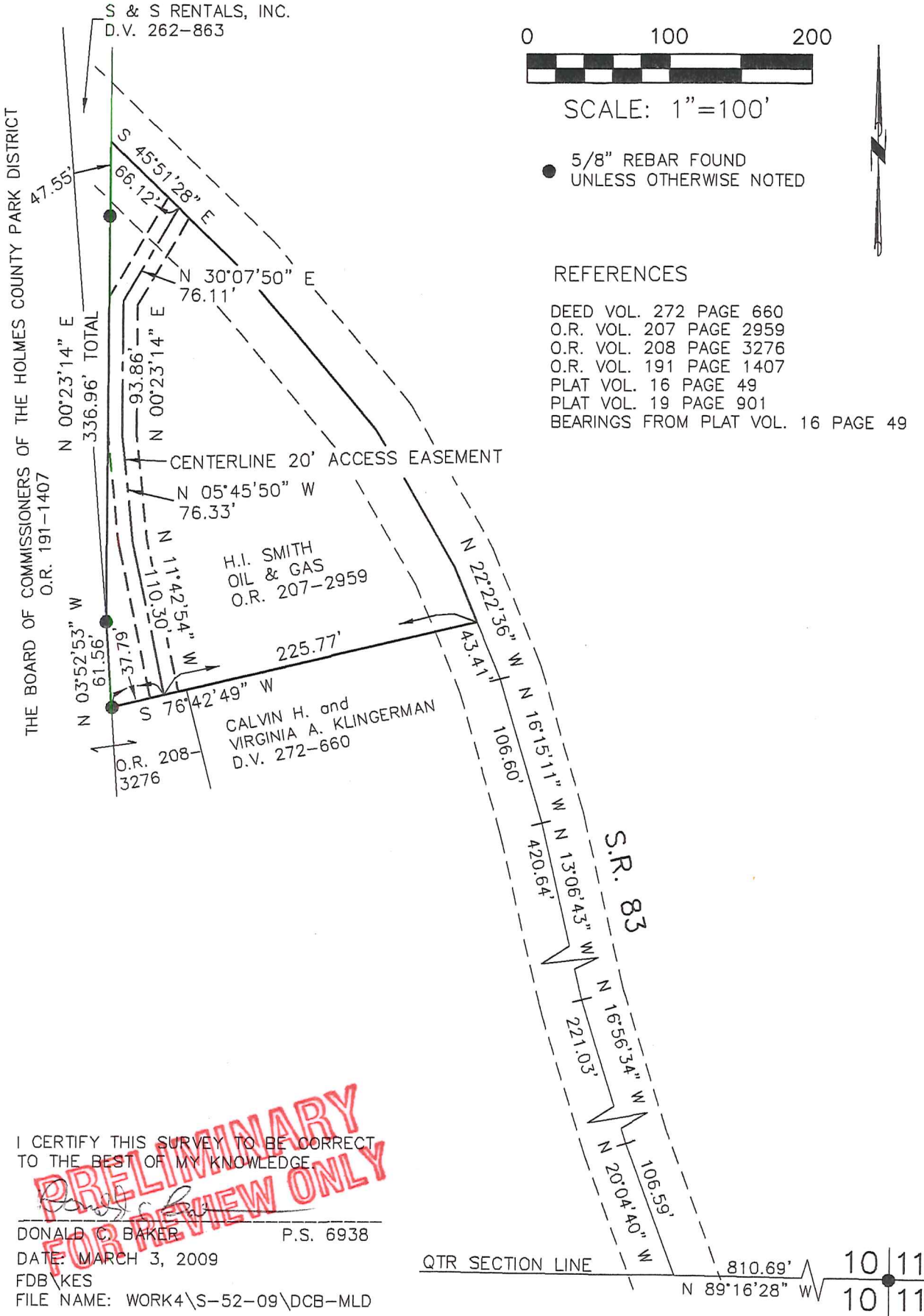


PRAIRIE TOWNSHIP
N.E. QTR. SECTION 10
T-13 N; R-13 W
HOLMES COUNTY, OHIO

SURVEYED FOR: HOLMES COUNTY PARK DISTRICT



I CERTIFY THIS SURVEY TO BE CORRECT TO THE BEST OF MY KNOWLEDGE

PRELIMINARY FOR REVIEW ONLY

Donald C. Baker
 DONALD C. BAKER P.S. 6938
 DATE: MARCH 3, 2009
 FDB KES
 FILE NAME: WORK4\S-52-09\DCB-MLD

QTR SECTION LINE

10	11
10	11

DONALD C. BAKER SURVEYING
 138 N. CLAY STREET
 MILLERSBURG, OHIO 44654
 PH. 330-674-4788
 FAX 330-674-6027