

PRAIRIE TOWNSHIP  
 S.E. QTR. SECTION 10  
 T-13 N; R-13 W  
 HOLMES COUNTY, OHIO

SURVEYED FOR: STEVE SCHLABACH

RECEIVED  
 JUL 16 2004  
 Hol. Co. Tax Map Office

0 300 600

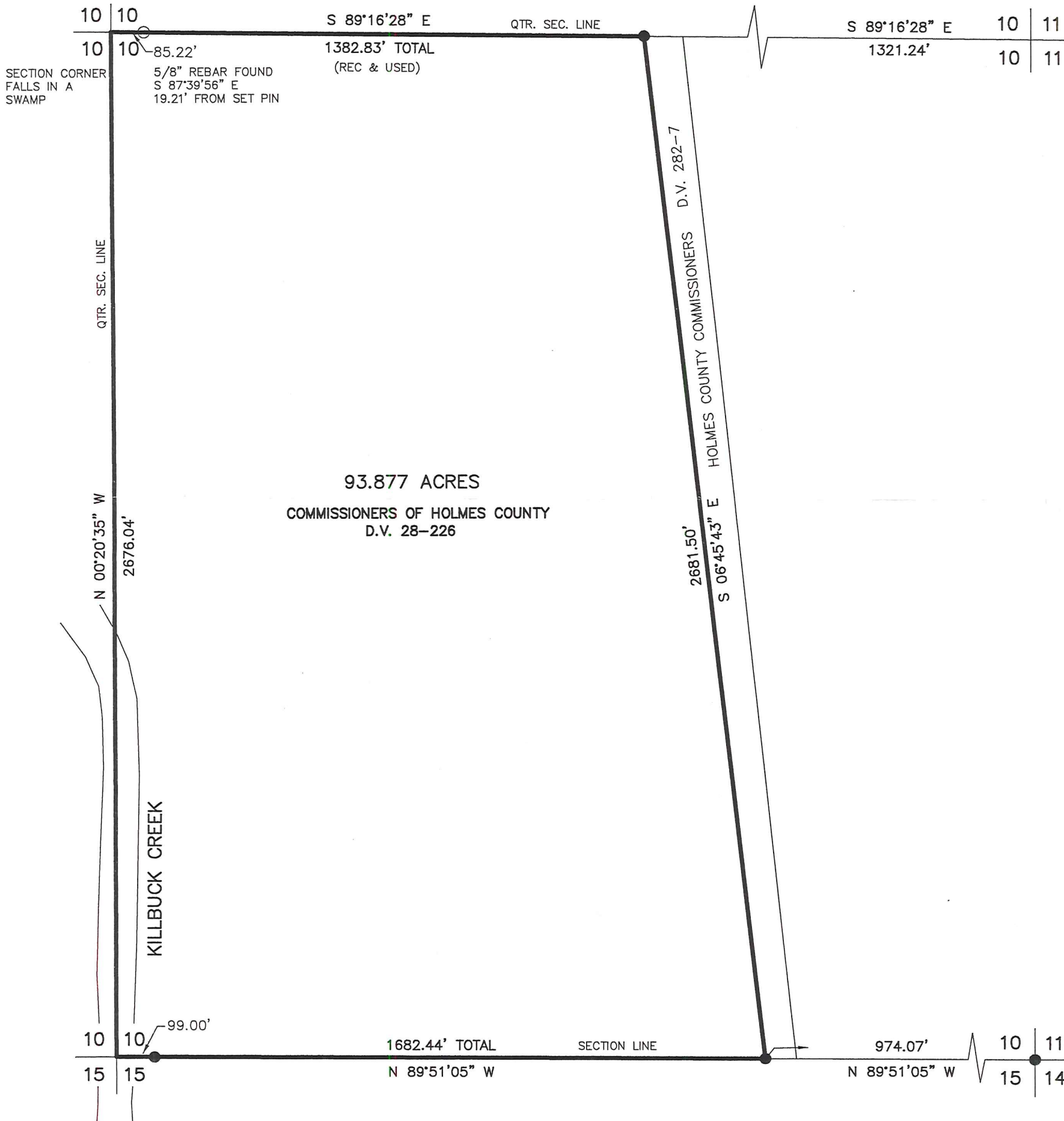


SCALE: 1"=300'

- 5/8" REBAR FOUND UNLESS OTHERWISE NOTED
- 5/8" REBAR WITH I.D. CAP SET I.D. CAP MARKED "BAKER 6938"

REFERENCES

- DEED VOL. 28 PAGE 226
- DEED VOL. 282 PAGE 7
- PLAT VOL. 2 PAGE 278
- PLAT VOL. 14 PAGE 811
- PLAT VOL. 16 PAGE 49
- BEARINGS FROM PLAT VOL 16 PAGE 49



DONALD C. BAKER SURVEYING  
 138 N. CLAY ST.  
 MILLERSBURG, OHIO, 44654  
 PH. 330-674-4788  
 FAX. 330-674-6027



I CERTIFY THIS SURVEY TO BE CORRECT TO THE BEST OF MY KNOWLEDGE.

*Donald C. Baker*

DONALD C. BAKER P.S. 6938  
 DATE: JULY 13, 2004

FDB\ERZ-AEG-ALG  
 File Name: WORK2\S-522-04\ERZ