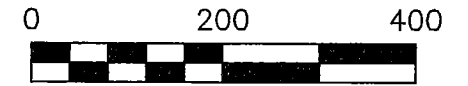
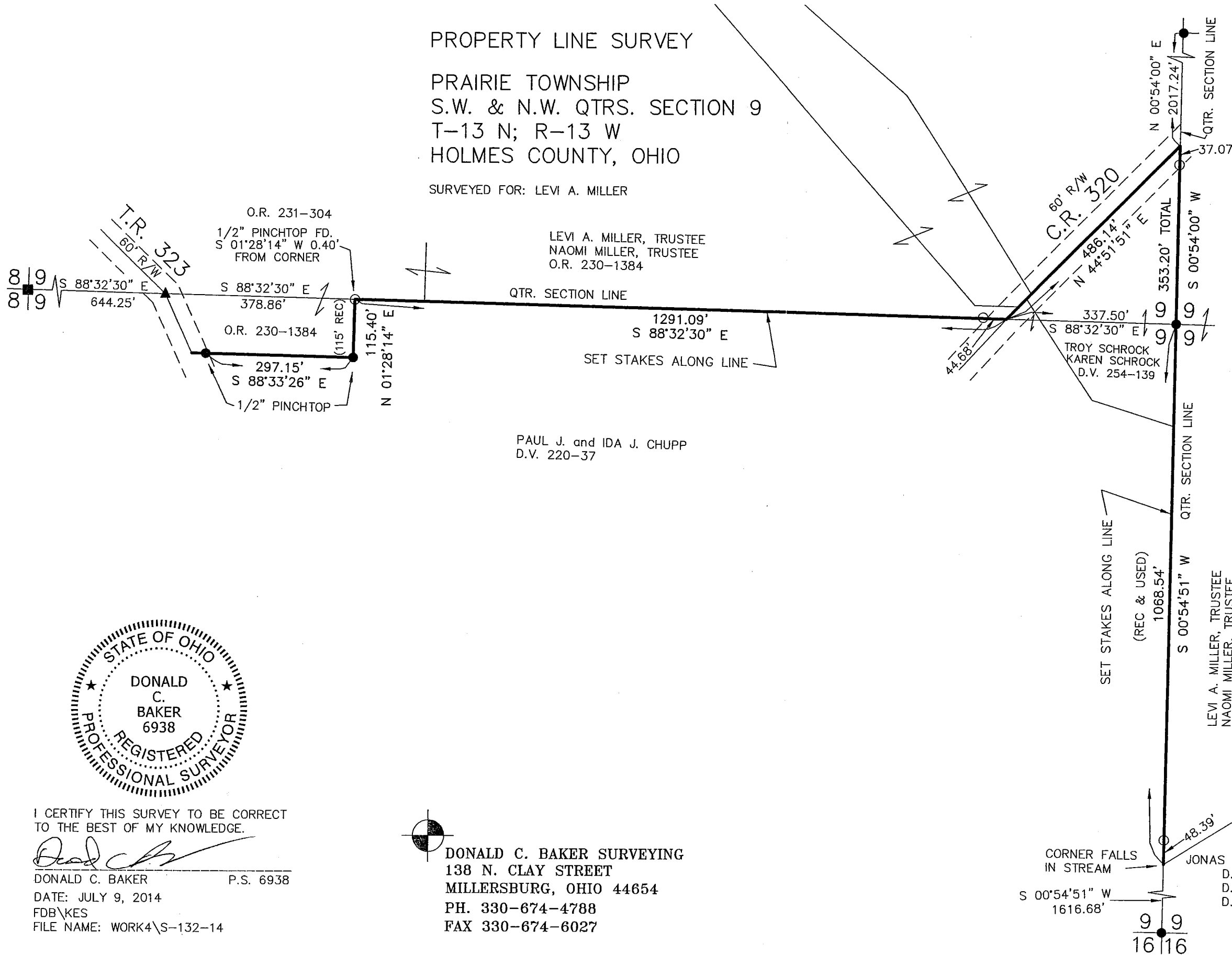


PROPERTY LINE SURVEY
 PRAIRIE TOWNSHIP
 S.W. & N.W. QTRS. SECTION 9
 T-13 N; R-13 W
 HOLMES COUNTY, OHIO

SURVEYED FOR: LEVI A. MILLER



SCALE: 1"=200'

- STONE FOUND
- ▲ R.R. SPIKE FOUND
- 5/8" REBAR FOUND UNLESS OTHERWISE NOTED
- 5/8" REBAR SET WITH I.D. CAP I.D. CAP MARKED "BAKER 6938"

REFERENCES

- O.R. VOL. 230 PAGE 1384
- PLAT VOL. 5 PAGE 16
- PLAT VOL. 7 PAGE 5
- PLAT VOL. 7 PAGE 37
- PLAT VOL. 9 PAGE 178
- PLAT VOL. 8 PAGE 399
- PLAT VOL. 10 PAGE 137
- PLAT VOL. 19 PAGE 1987

BEARINGS FROM
 PLAT VOL. 19 PAGE 1987



I CERTIFY THIS SURVEY TO BE CORRECT TO THE BEST OF MY KNOWLEDGE.

Donald C. Baker

DONALD C. BAKER P.S. 6938

DATE: JULY 9, 2014

FDB\KES

FILE NAME: WORK4\S-132-14



DONALD C. BAKER SURVEYING
 138 N. CLAY STREET
 MILLERSBURG, OHIO 44654
 PH. 330-674-4788
 FAX 330-674-6027