

SOUTH EAST QUARTER SECTION 1  
 TOWNSHIP 17 RANGE 14 RIPLEY TOWNSHIP EXHIBIT A  
 SOUTH WEST QUARTER SECTION 6  
 TOWNSHIP 13 RANGE 13 PRAIRIE TOWNSHIP  
 HOLMES COUNTY, OHIO DECEMBER, 1967

CORNER POST FOUND  
 N.W. CORNER S.W. QUARTER  
 SECTION 6 T-13 R-13  
 PRAIRIE TOWNSHIP  
 ALSO  
 N.E. CORNER S.E. QUARTER  
 SECTION 1 T-17 R-14  
 RIPLEY TOWNSHIP

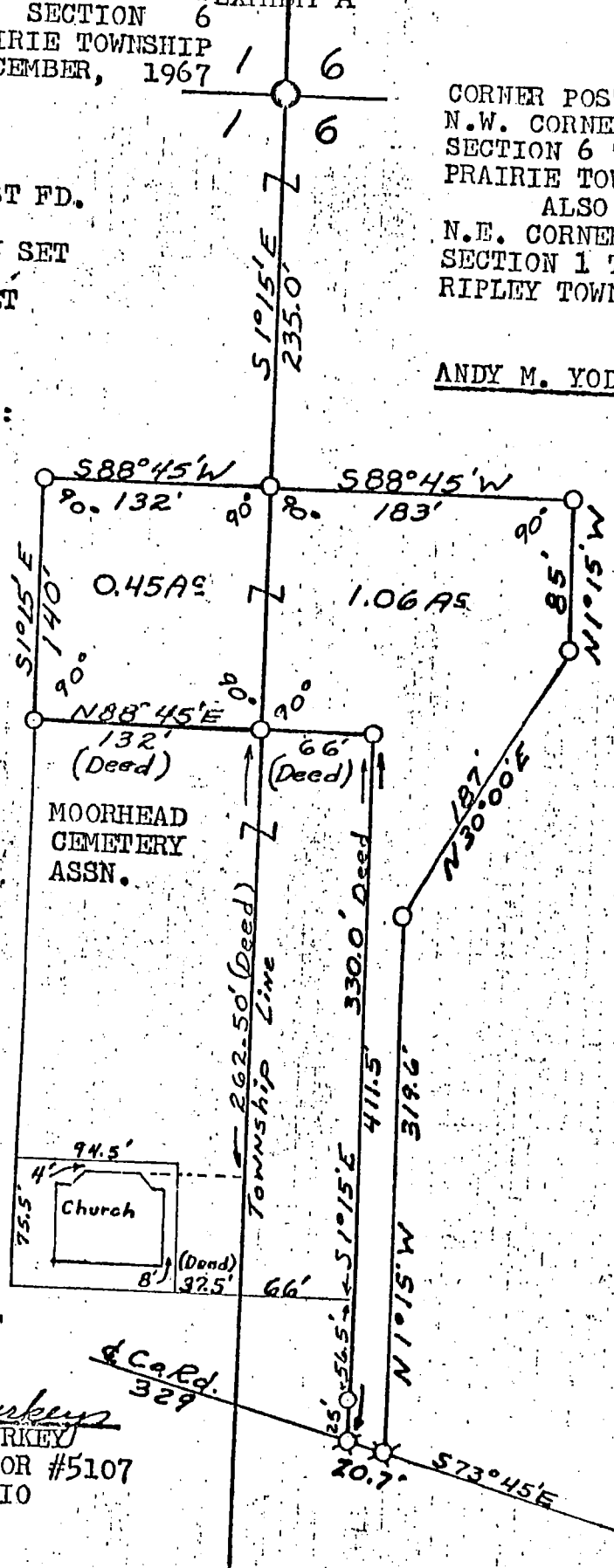
- - COR. POST FD.
- - IRON PIN SET
- ⊗ - SPIKE SET

SCALE - 1"=100'

DEED REFERENCES:  
 V-99 P-173  
 V-99 P-174

ANDY M. YODER FARM

RECENTLY COMPLE  
 SCHOOL HOUSE ON  
 THIS SITE.



I CERTIFY THIS SURVEY TO  
 BE CORRECT TO THE BEST OF  
 MY KNOWLEDGE AND BELIEF.

SIGNED William T. Burkey  
 WILLIAM T. BURKEY  
 REGISTERED SURVEYOR #5107  
 STATE OF OHIO

