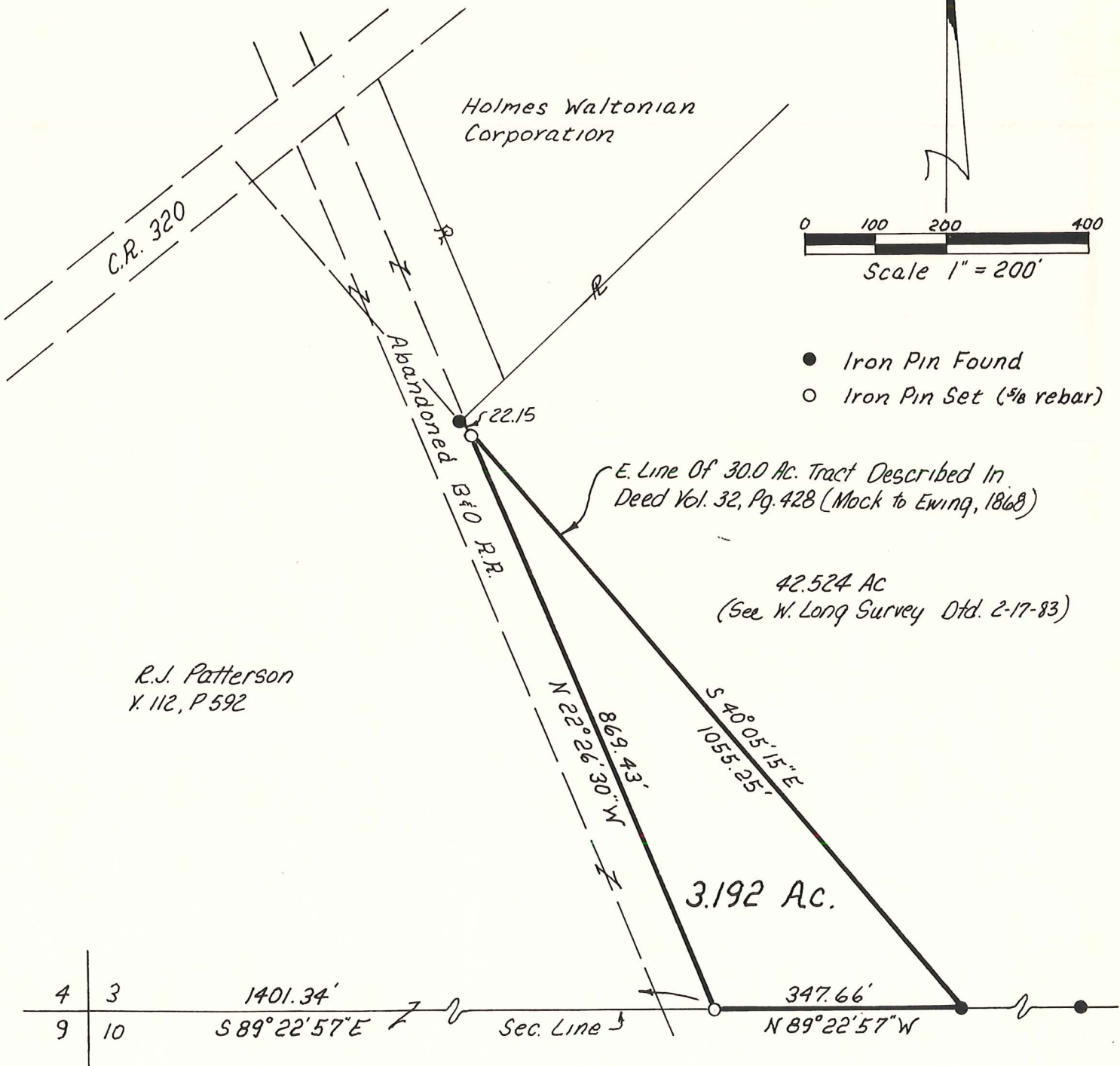


PRAIRIE TOWNSHIP
 HOLMES COUNTY, OHIO
 S.W. Qtr., Sec. 3, T-13N, R-13W



R.J. Patterson
 X 112, P 592

This Plat Shows A Parcel Of Land Which Was Intended To Be A Part Of Vol 112, Pg 592 To R.J. Patterson, But Was Omitted From The Description.

I Certify This Plat To Be Correct To The Best Of My Knowledge.

William H. Long
 William H. Long R.B. 6505
 RD#1 Box 69A
 Big Prairie, Ohio, 44611

