



SCALE: 1" = 200'

- IRON PIN FOUND
- 5/8" RE BAR WITH I.D. CAP SET  
I.D. CAP MARKED "BAKER 6938"

PRAIRIE TOWNSHIP  
N.E. QTR. SECTION 3  
T-13 N; R-13 W  
HOLMES COUNTY, OHIO  
(SURVEYED FOR: R. GENE & SUE E. SMITH)

REFERENCES:

DEED VOL. 219 PAGE 366  
" " 128 " 298  
" " 281 " 545

P.U. 6 Pg. 113  
" 15 " 154  
" 12 " 439  
" 7 " 515

BEARINGS FROM DEED  
VOL. 128 PAGE 298.

RECEIVED  
MAY 11 2000  
Hol. Co. Tax Map Office



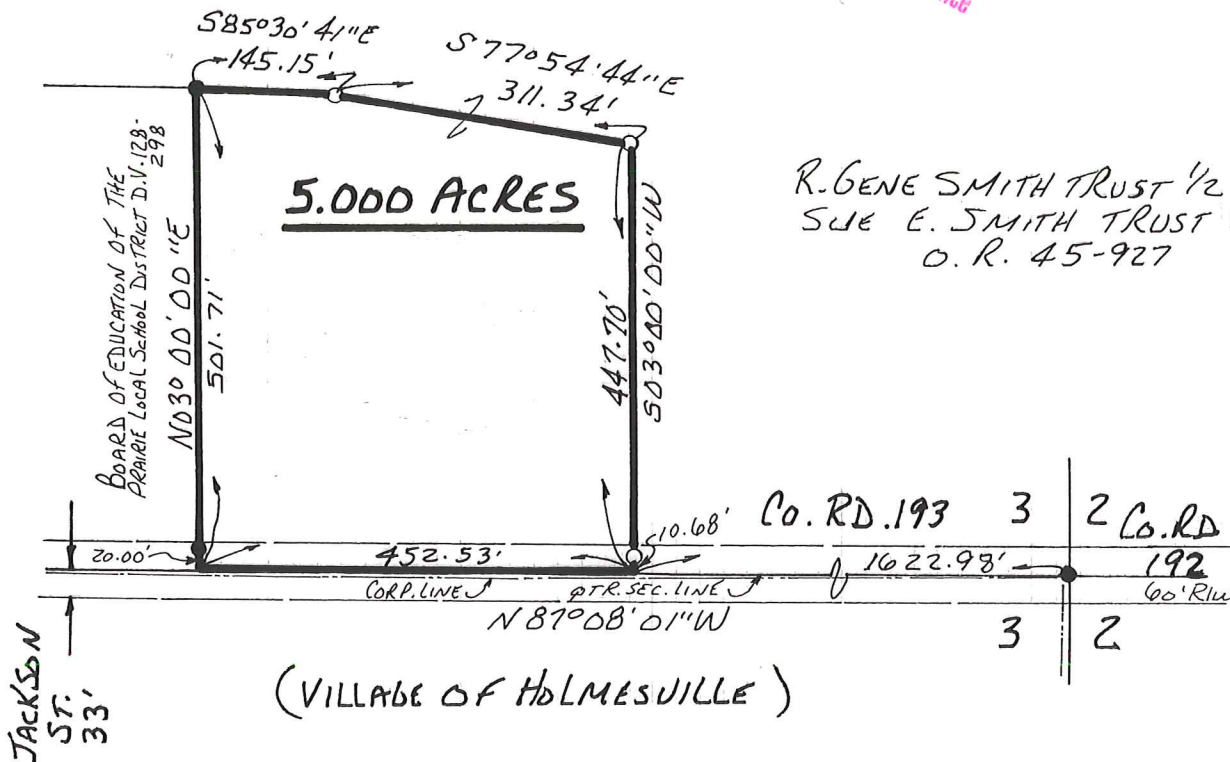
I CERTIFY THIS SURVEY TO BE CORRECT  
TO THE BEST OF MY KNOWLEDGE.

*Donald C. Baker*

DONALD C. BAKER P.S. 6938  
DONALD C. BAKER SURVEYING  
138 N. CLAY ST.  
MILLERSBURG, OHIO 44654  
PH. (330) 674-4788

MAY 4, 2000

#26800 - M.L. DAVIS  
F.C.C. - F.D. BAKER



R. GENE SMITH TRUST 1/2  
SUE E. SMITH TRUST 1/2  
O.R. 45-927