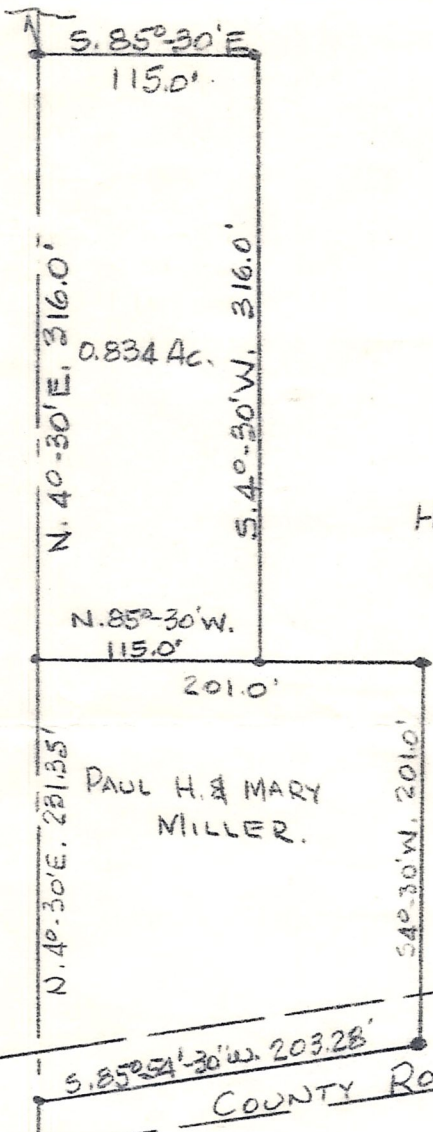
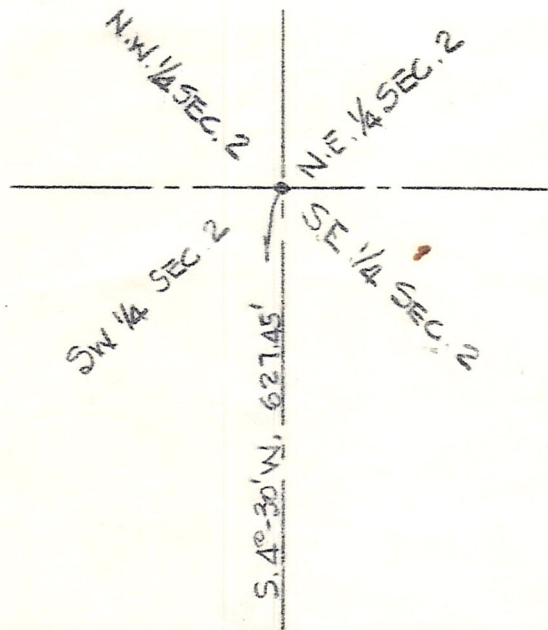


APPROVED BY
TAX MAP OFFICE
Date DEC. 2-74 9M



HENRY E. & FANNIE
HERSHBERGER

MAP OFFICE COPY



PLAT OF A SURVEY OF A PART OF THE
SOUTHEAST QUARTER OF SECTION 2,
TOWNSHIP 13, RANGE 13, PRAIRIE TWP.,
HOLMES COUNTY, OHIO FOR H & F. HERSHBERGER
SCALE - 1" = 100'
APRIL 27, 1974
R. H. HUNSINGER, #3685, REGISTERED SURVEYOR,