

SCALE: 1"=200'

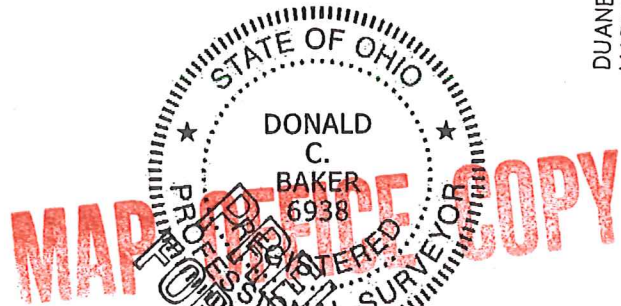
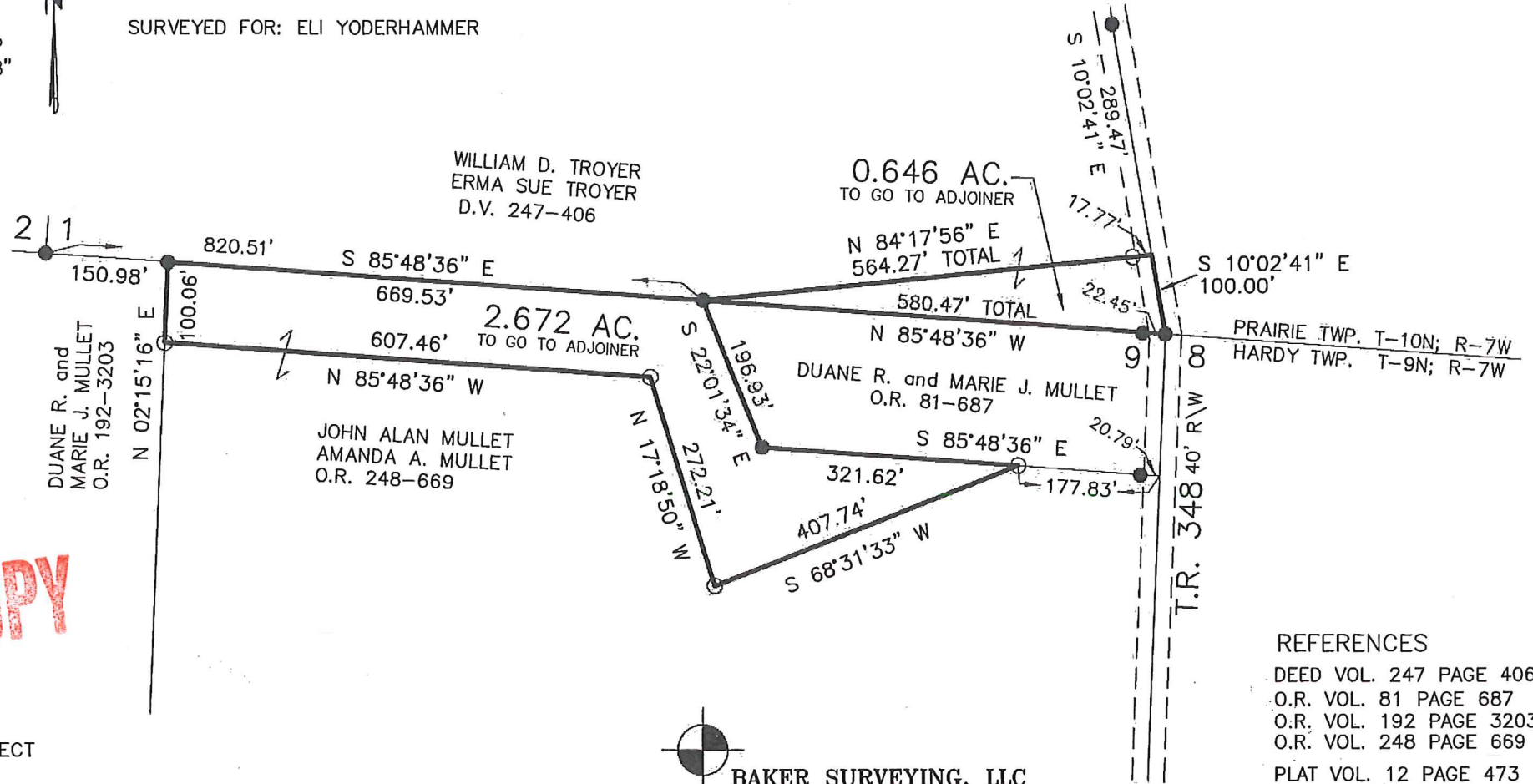
- 5/8" REBAR FOUND UNLESS OTHERWISE NOTED
- 5/8" REBAR SET WITH I.D. CAP I.D. CAP MARKED "BAKER 6938"

HARDY TOWNSHIP
2ND. QTR., LOT 9
T-9 N; R-7 W
HOLMES COUNTY, OHIO

PRAIRIE TOWNSHIP
3RD. QTR., LOT 1
T-10 N; R-7 W
HOLMES COUNTY, OHIO

SURVEYED FOR: ELI YODERHAMMER

FEB 28 '17 PM 3:45



I CERTIFY THIS SURVEY TO BE CORRECT TO THE BEST OF MY KNOWLEDGE.

Donald C. Baker
DONALD C. BAKER, P.S. 6938
DATE: FEB. 28, 2017
KES\JPD
FILE NAME: WORK4\S-80-17



BAKER SURVEYING, LLC
138 N. CLAY STREET
MILLERSBURG, OHIO 44654
PH. 330-674-4788
FAX 330-674-6027

- REFERENCES
- DEED VOL. 247 PAGE 406
 - O.R. VOL. 81 PAGE 687
 - O.R. VOL. 192 PAGE 3203
 - O.R. VOL. 248 PAGE 669
 - PLAT VOL. 12 PAGE 473
 - PLAT VOL. 13 PAGE 107
 - PLAT VOL. 18 PAGE 18
 - PLAT VOL. 13 PAGE 107
 - BEARINGS FROM PLAT VOL. 12 PAGE 473

~~PLAT APPROVED~~