

VILLAGE OF HOLMESVILLE  
 HOMESTEAD ADDITION  
 (PLAT VOL. 1, PAGES 335 & 336)  
 PART OF LOTS 58 & 64  
 ALL OF LOTS 57 & 65

PLAT SHOWING THE LOCATION  
 OF MONUMENTS SET.

0 60 120



SCALE: 1"=60'

- ▲ R.R. SPIKE FOUND
- 5/8" REBAR FOUND  
UNLESS OTHERWISE NOTED
- 5/8" REBAR SET WITH I.D. CAP  
I.D. CAP MARKED "BAKER 6938"

PRAIRIE TOWNSHIP  
 S.E. QTR. SECTION 3  
 T-13 N; R-13 W  
 HOLMES COUNTY, OHIO

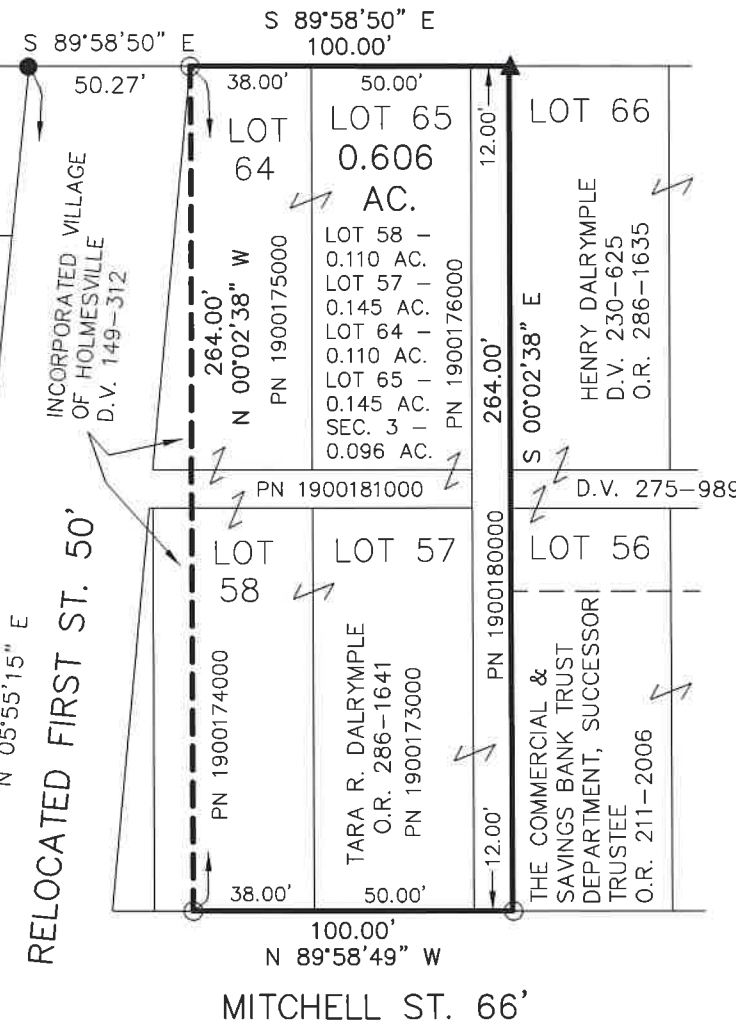
SURVEYED FOR: TARA DALRYMPLE

REFERENCES

O.R. VOL. 286 PAGE 1641  
 O.R. VOL. 270 PAGE 6572  
 PLAT VOL. 2 PAGE 593  
 PLAT VOL. 1 PAGE 335 & 336

BASIS OF BEARINGS FROM  
 OHIO STATE PLANE COORDINATE  
 SYSTEM, NORTH ZONE, N.A.D. 83,  
 2011 ADJUSTMENT

B STREET 66'



C.R. 192	1
60' R/W	2
	3
	2



I CERTIFY THIS SURVEY TO BE CORRECT  
 TO THE BEST OF MY KNOWLEDGE.

*Donald C. Baker*

DONALD C. BAKER P.S. 6938

DATE: JAN. 11, 2024

TAB\GRB

FILE NAME: WORK6\S-704-23\CNK



BAKER SURVEYING, LLC  
 138 N. CLAY STREET  
 MILLERSBURG, OHIO 44654  
 PH. 330-674-4788  
 EMAIL: bakersurveying@gmail.com

Δ=00°25'23"  
 R=3568.80'  
 T=13.17'  
 BRG=N 18°24'33" E  
 C LEN=26.35'  
 L=26.35'

THE BOARD OF COMMISSIONERS  
 OF THE HOLMES COUNTY  
 PARK DISTRICT  
 O.R. 191-1407

ALL THE LOTS IN THE HOMESTEAD ADDITION WERE  
 LAID OUT 25' NORTH OF THE CENTER OF THE ROAD.  
 PLAT VOL. 4 PAGE 124 CALLS BENTON AVENUE 50'.

BENTON AVE. aka C.R. 189 60' R/W

CENTERLINE ROAD

1360.64'  
 N 89°59'14" W

CORP. LINE

SECTION LINE  
 1295.34' S 00°08'40" E