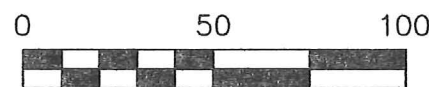


VILLAGE OF HOLMESVILLE  
HOMESTEAD ADDITION  
LOTS 85, 86, 87, 88, 89 & 90

PRAIRIE TOWNSHIP  
S.E. QTR. SECTION 3  
T-13 N; R-13 W  
HOLMES COUNTY, OHIO

SURVEYED FOR: ROY HOSTETLER

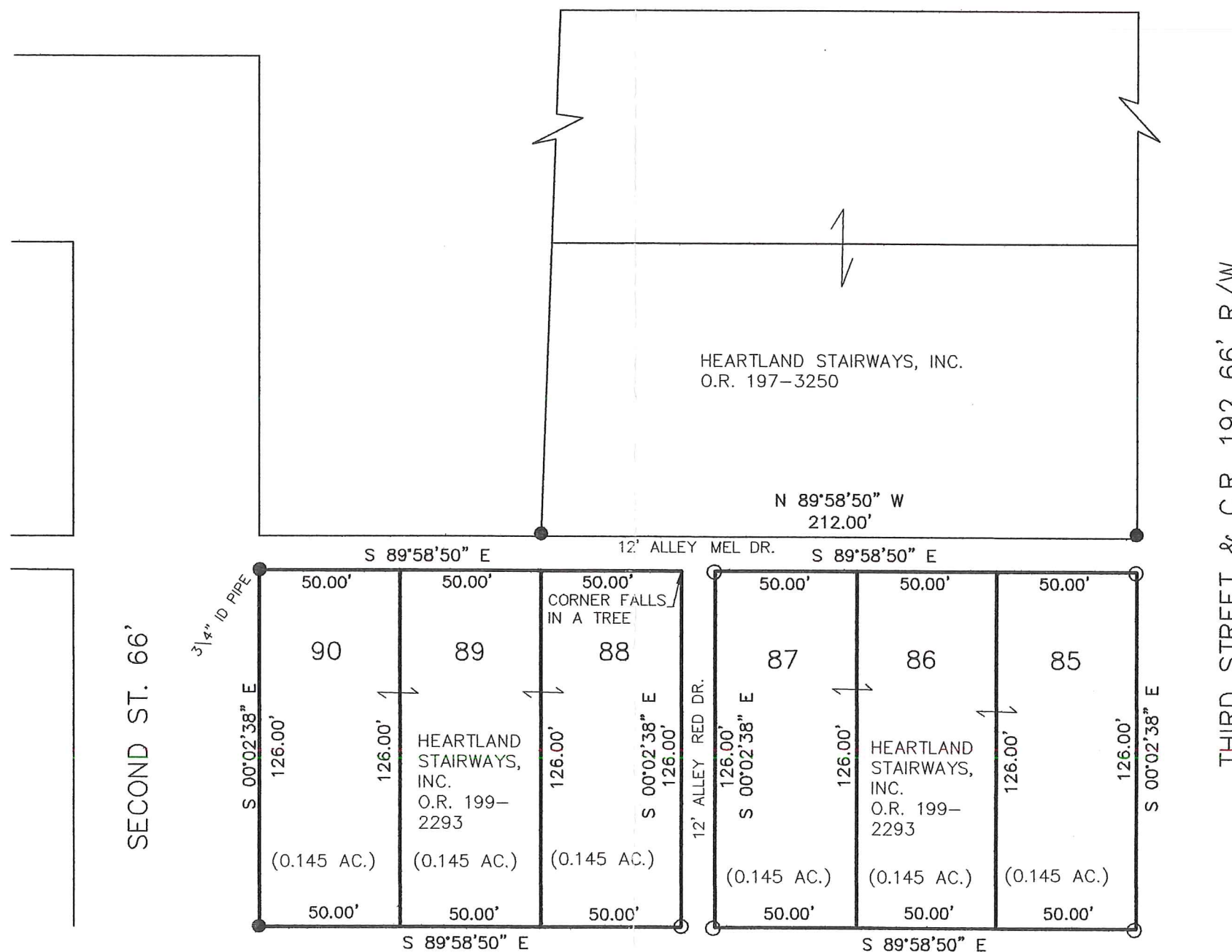


SCALE: 1"=50'

- 5/8" REBAR FOUND UNLESS OTHERWISE NOTED
- 5/8" REBAR WITH I.D. CAP SET I.D. CAP MARKED "BAKER 6938"

FREDERICKSBURG AVENUE 33'  
aka CR 193 (60' R/W)

CR 192



THIRD STREET & C.R. 192 66' R/W

REFERENCES  
 O.R. VOL. 197 PAGE 3250  
 O.R. VOL. 199 PAGE 2293  
 PLAT VOL. 9 PAGE 163  
 BEARINGS FROM PLAT VOL. 9 PAGE 163

I CERTIFY THIS SURVEY TO BE CORRECT TO THE BEST OF MY KNOWLEDGE.

**PRELIMINARY FOR REVIEW ONLY**

DONALD C. BAKER P.S. 6938  
 DATE: JULY 24, 2008  
 ERZ/KES  
 File Name: WORK2\S-244-08\MLD

DONALD C. BAKER SURVEYING  
 138 N. CLAY ST.  
 MILLERSBURG, OHIO, 44654  
 PH. 330-674-4788  
 FAX. 330-674-6027

B STREET 66'