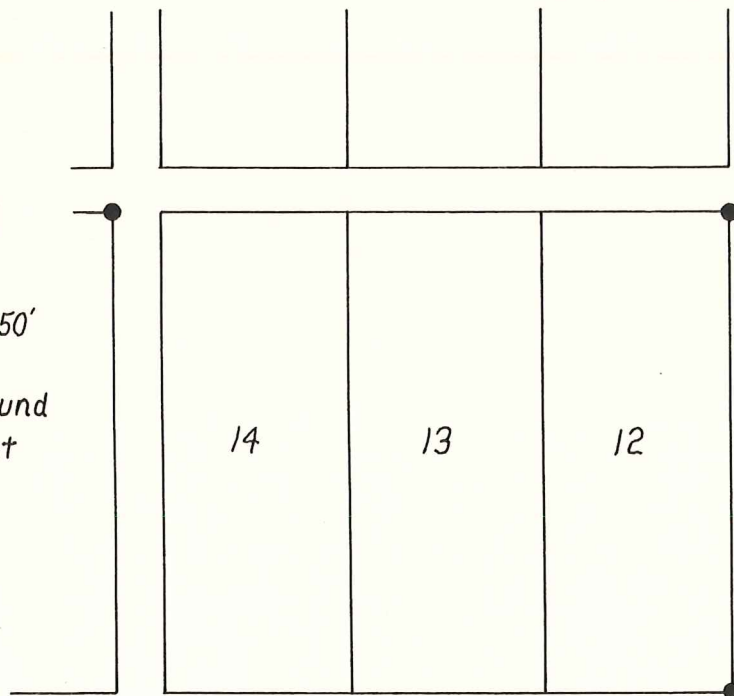


VILLAGE OF HOLMESVILLE
 HOLMES COUNTY OHIO
 LOTS 9, 10, 11
 HOMESTEAD ADDITION, PLAT VOL. 1, PAGE 335

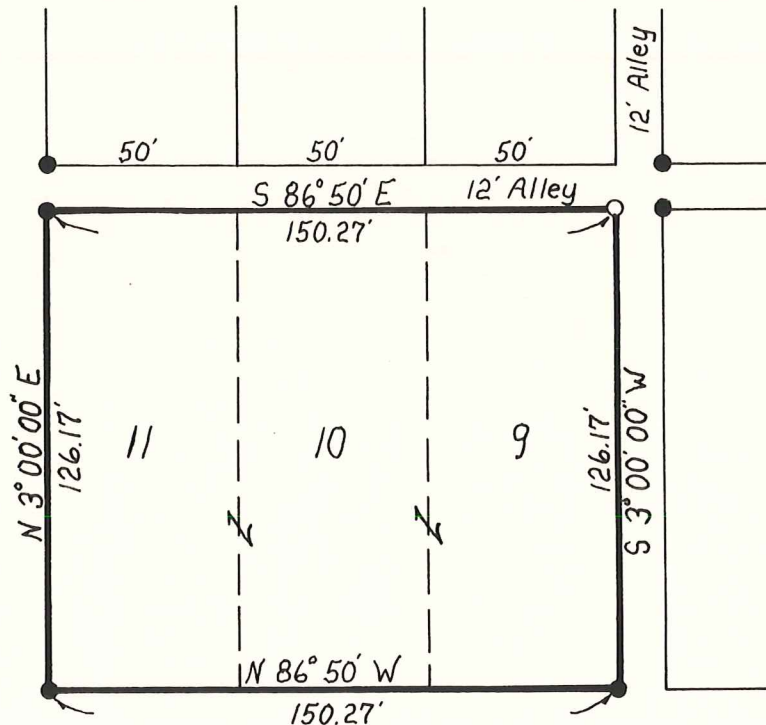


Scale 1" = 50'

- I.P. Found
- I.P. Set



SECOND STREET 66'



BENTON ROAD

Surveyed For Clarence McElroy

I Certify This Plat To Be Correct
 To The Best of My Knowledge.

William H. Long

William H. Long R.S. 6505 March 9 1982

