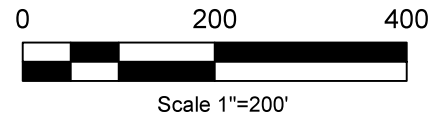
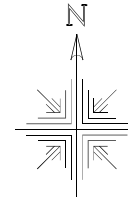
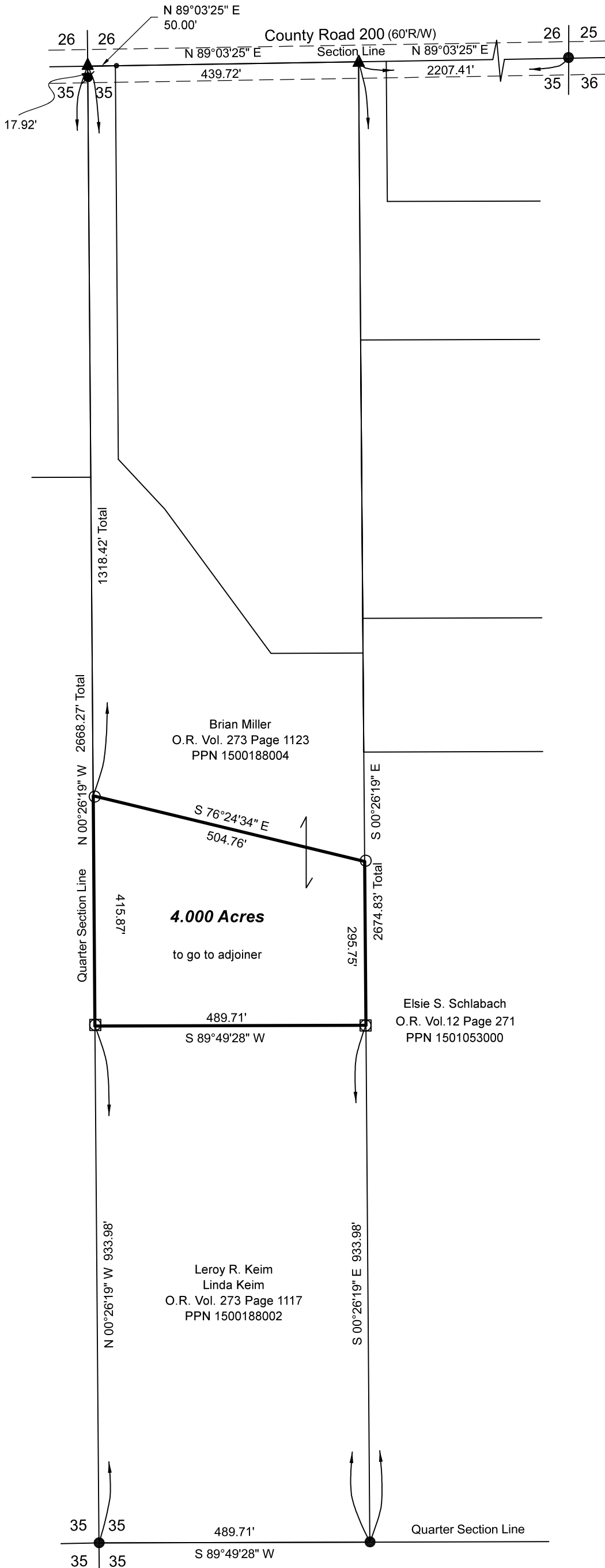


Paint Township
 N.E. Qtr. Sec. 35
 T-15 N; R-11 W
 Holmes County, Ohio
 SURVEYED FOR: Brian Miller



REFERENCES:

Deeds as shown

Surveys By

- Plat Vol. 16 Page 783
- Plat Vol. 16 Page 599
- Plat Vol. 16 Page 707
- Plat Vol. 16 Page 944
- Plat Vol. 18 Page 670
- Plat Vol. 19 Page 3708
- Plat Vol. 19 Page 4128

Basis of Bearing from Ohio State Plane Coordinate System, North Zone, NAD 83.

- 5/8" Capped Pin Found "Galbraith"
- ▲ RR Spk. Found
- 5/8" Rebar Found unless noted
- 5/8" Capped Pin Found "Baker"
- 5/8" Capped Pin Set "Galbraith"
- Point



I certify this survey to be correct to the best of my knowledge.

Caleb Jerome Galbraith P.S. 8703

Date: August 18, 2021

Job ID: 16621-H27

Pioneer Surveying & Services, LLC.

5434 Township Road 377

Millersburg, Ohio 44654

Phone: 330-231-0497

Email: caleb@pioneersurveyingandservices.com

