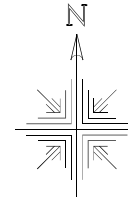
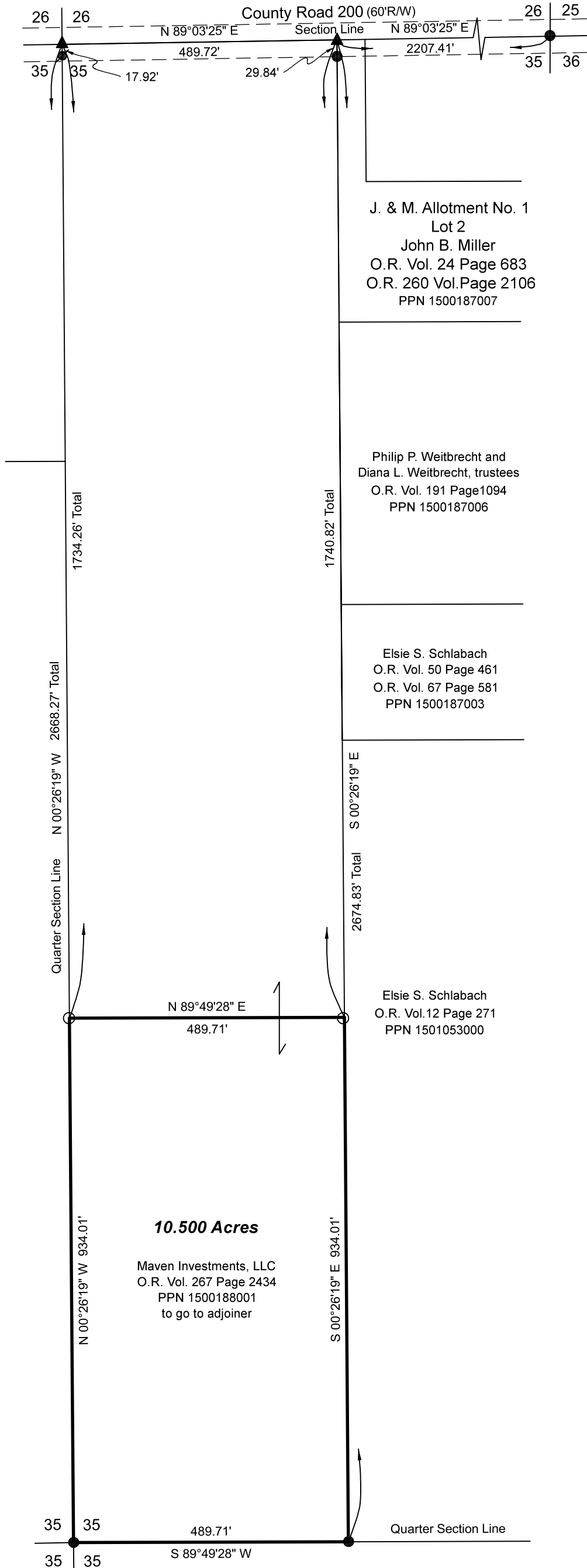


**Paint Township  
N.E. Qtr. Sec. 35  
T-15 N; R-11 W  
Holmes County, Ohio**  
SURVEYED FOR: Merle Beachy



Scale 1"=200'

J. & M. Allotment No. 1  
Lot 2  
John B. Miller  
O.R. Vol. 24 Page 683  
O.R. 260 Vol. Page 2106  
PPN 1500187007

Philip P. Weitbrecht and  
Diana L. Weitbrecht, trustees  
O.R. Vol. 191 Page 1094  
PPN 1500187006

Elsie S. Schlabach  
O.R. Vol. 50 Page 461  
O.R. Vol. 67 Page 581  
PPN 1500187003

Elsie S. Schlabach  
O.R. Vol. 12 Page 271  
PPN 1501053000

**10.500 Acres**

Maven Investments, LLC  
O.R. Vol. 267 Page 2434  
PPN 1500188001  
to go to adjoiner

**REFERENCES:**

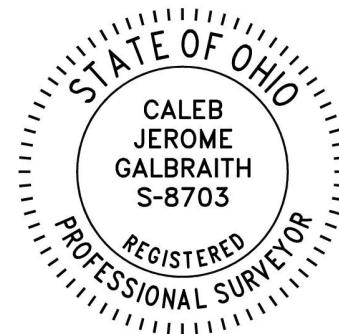
Deeds as shown

Surveys By

- Plat Vol. 16 Page 783
- Plat Vol. 16 Page 599
- Plat Vol. 16 Page 707
- Plat Vol. 16 Page 944
- Plat Vol. 18 Page 670
- Plat Vol. 19 Page 3708

Basis of Bearing from Ohio State Plane Coordinate System, North Zone, NAD 83.

- ▲ RR Spk. Found
- 5/8" Rebar Found unless noted
- ⦿ 5/8" Capped Pin Found "Baker"
- 5/8" Capped Pin Set "Galbraith"
- Point



I certify this survey to be correct to the best of my knowledge.

*Caleb Galbraith*

Caleb Jerome Galbraith P.S. 8703

Date: April 15, 2020

Job ID: 4820-H27

Pioneer Surveying & Services, LLC.

5434 Township Road 377

Millersburg, Ohio 44654

Phone: 330-231-0497

Email: caleb@pioneersurveyingandservices.com

