

PAINT TOWNSHIP
N.E. & S.E. QTRS. SECTION 31
T-15 N; R-11 W
HOLMES COUNTY, OHIO

SURVEYED FOR: JERRY SCHLABACH

0 200 400

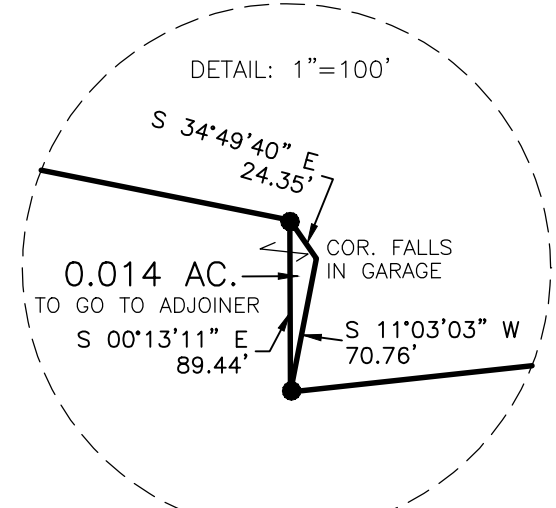
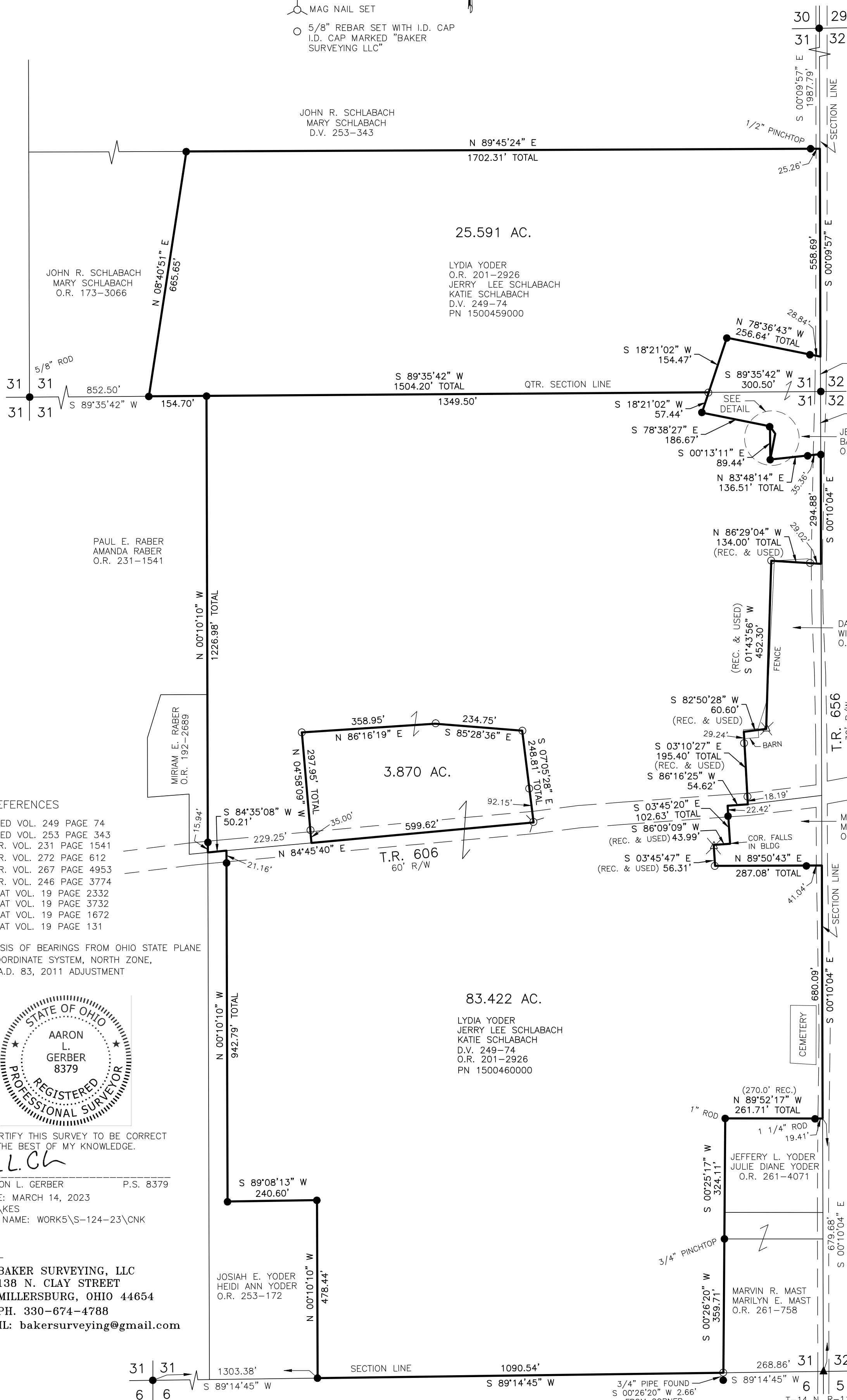


SCALE: 1"=200'

- ▲ R.R. SPIKE FOUND
- 5/8" REBAR FOUND UNLESS OTHERWISE NOTED
- ⊗ DRILL HOLE SET
- MAG NAIL SET
- 5/8" REBAR SET WITH I.D. CAP I.D. CAP MARKED "BAKER SURVEYING LLC"

MASTER PLAT

- ACTION 1) CONVEY 0.014 ACRES TO ADJOINER
- ACTION 2) CONVEY 3.870 ACRES
- ACTION 3) CONVEY 25.591 ACRES AND 83.423 ACRES



- REFERENCES
- DEED VOL. 249 PAGE 74
 - DEED VOL. 253 PAGE 343
 - O.R. VOL. 231 PAGE 1541
 - O.R. VOL. 272 PAGE 612
 - O.R. VOL. 267 PAGE 4953
 - O.R. VOL. 246 PAGE 3774
 - PLAT VOL. 19 PAGE 2332
 - PLAT VOL. 19 PAGE 3732
 - PLAT VOL. 19 PAGE 1672
 - PLAT VOL. 19 PAGE 131

BASIS OF BEARINGS FROM OHIO STATE PLANE COORDINATE SYSTEM, NORTH ZONE, N.A.D. 83, 2011 ADJUSTMENT



I CERTIFY THIS SURVEY TO BE CORRECT TO THE BEST OF MY KNOWLEDGE.
A-L.G.
AARON L. GERBER P.S. 8379
DATE: MARCH 14, 2023
ALG/KES
FILE NAME: WORK5\S-124-23\CNK

BAKER SURVEYING, LLC
138 N. CLAY STREET
MILLERSBURG, OHIO 44654
PH. 330-674-4788
EMAIL: bakersurveying@gmail.com

31 | 31 | 1303.38' | SECTION LINE | 1090.54' | 31 | 32 |
6 | 6 | S 89°14'45" W | S 89°14'45" W | S 89°14'45" W | S 89°14'45" W | 6 | 5
3/4" PIPE FOUND 3/4" PINCHTOP FROM CORNER