

PAINT TOWNSHIP
N.E. QTR. SECTION 31
T-15 N; R-11 W
HOLMES COUNTY, OHIO

SURVEYED FOR: JOHN SCHLABACH

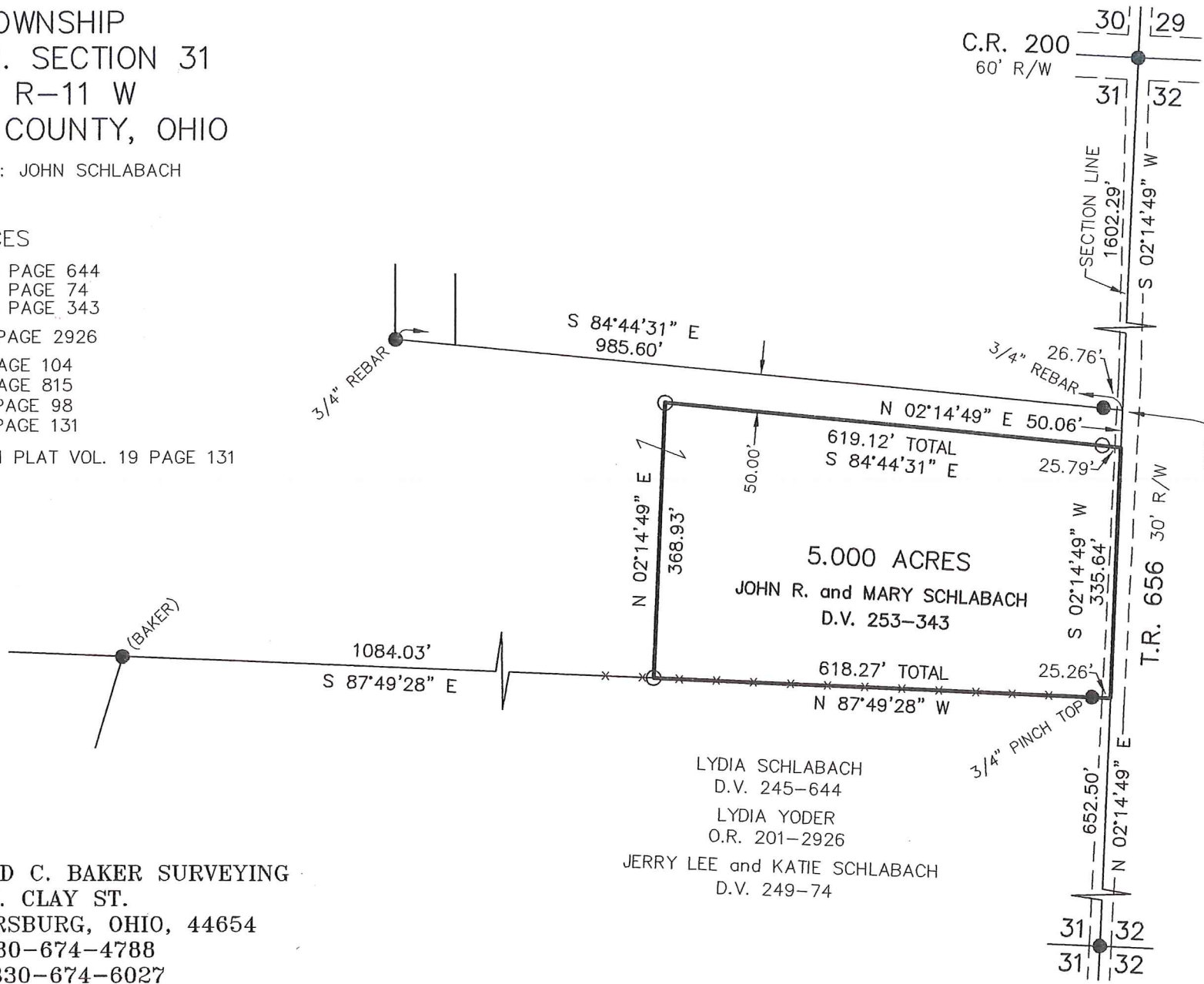
REFERENCES

DEED VOL. 245 PAGE 644
DEED VOL. 249 PAGE 74
DEED VOL. 253 PAGE 343

O.R. VOL. 201 PAGE 2926

PLAT VOL. 6 PAGE 104
PLAT VOL. 8 PAGE 815
PLAT VOL. 16 PAGE 98
PLAT VOL. 19 PAGE 131

BEARINGS FROM PLAT VOL. 19 PAGE 131



SCALE: 1"=200'

- 5/8" REBAR FOUND UNLESS OTHERWISE NOTED
- 5/8" REBAR WITH I.D. CAP SET, I.D. CAP MARKED "BAKER 6938"

R.R. SPIKE FOUND
S 84°44'31" E
3.24' FROM CORNER



DONALD C. BAKER SURVEYING
138 N. CLAY ST.
MILLERSBURG, OHIO, 44654
PH. 330-674-4788
FAX. 330-674-6027

LYDIA SCHLABACH
D.V. 245-644
LYDIA YODER
O.R. 201-2926
JERRY LEE and KATIE SCHLABACH
D.V. 249-74

I CERTIFY THIS SURVEY TO BE CORRECT
TO THE BEST OF MY KNOWLEDGE

ERIC R. ZAUGG P.S. 8309

DATE: JUNE 15, 2009

ERZ/ACB
File Name: WORK2\S-172-09\ERZ

**PRELIMINARY
FOR REVIEW ONLY**