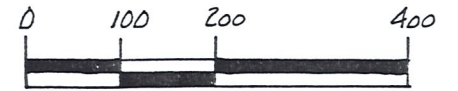


J.J.Y. CONSTRUCTION INC.
240-269

PAINT TOWNSHIP
S.W. QTR. SECTION 27
T-15N R-11W
HOLMES COUNTY, OHIO



SCALE: 1" = 200'

- ▲ R.R. SPIKE FOUND
- IRON PIN FOUND
- △ R.R. SPIKE SET
- 5/8" RE BAR WITH I.D. CAP SET
- I.D. CAP MARKED "BAKER 6938"

REFERENCES:

- PLAT VOL. 10 PAGE 92
- PLAT VOL. 13 PAGE 22
- PLAT VOL. 13 PAGE 73
- PLAT VOL. 10 PAGE 458
- PLAT VOL. 12 PAGE 82
- PLAT VOL. 9 PAGE 216
- DEED VOL. 256 PAGE 724
- PLAT VOL. 14 PAGE 16
- DEED VOL. 240 PAGE 269
- DEED VOL. 240 PAGE 727
- DEED VOL. 241 PAGE 287

BEARINGS FROM DEED VOL. 255 PAGE 951

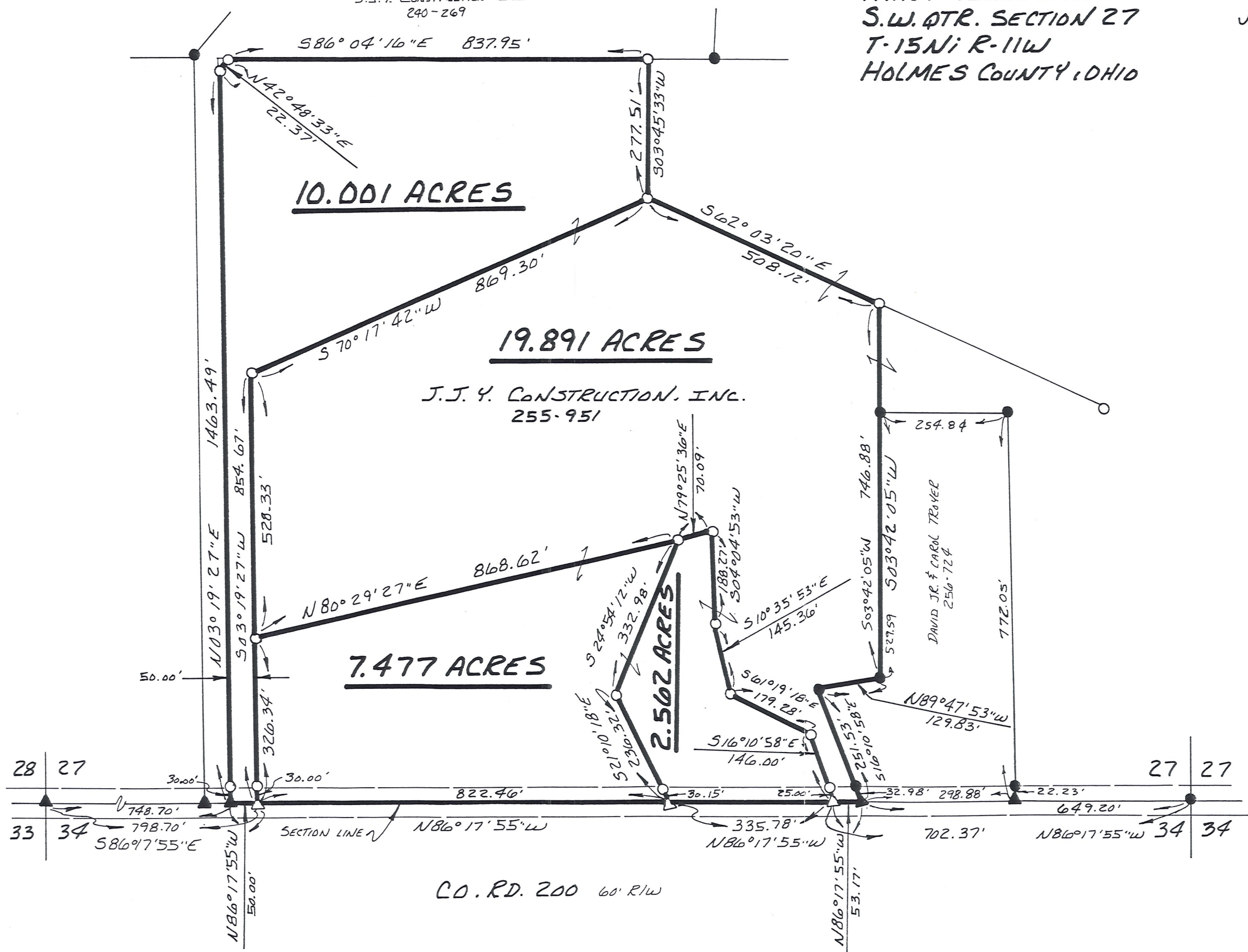


I CERTIFY THIS SURVEY TO BE
CORRECT TO THE BEST OF MY
KNOWLEDGE.

Donald C. Baker
DONALD C. BAKER P.S. 6938
5958 T.R. 322
MILLERSBURG, OHIO 44654
PH. (216) 674-4788

NOVEMBER 12, 1992

49592-MLS



CO. RD. 200 60' R/W