

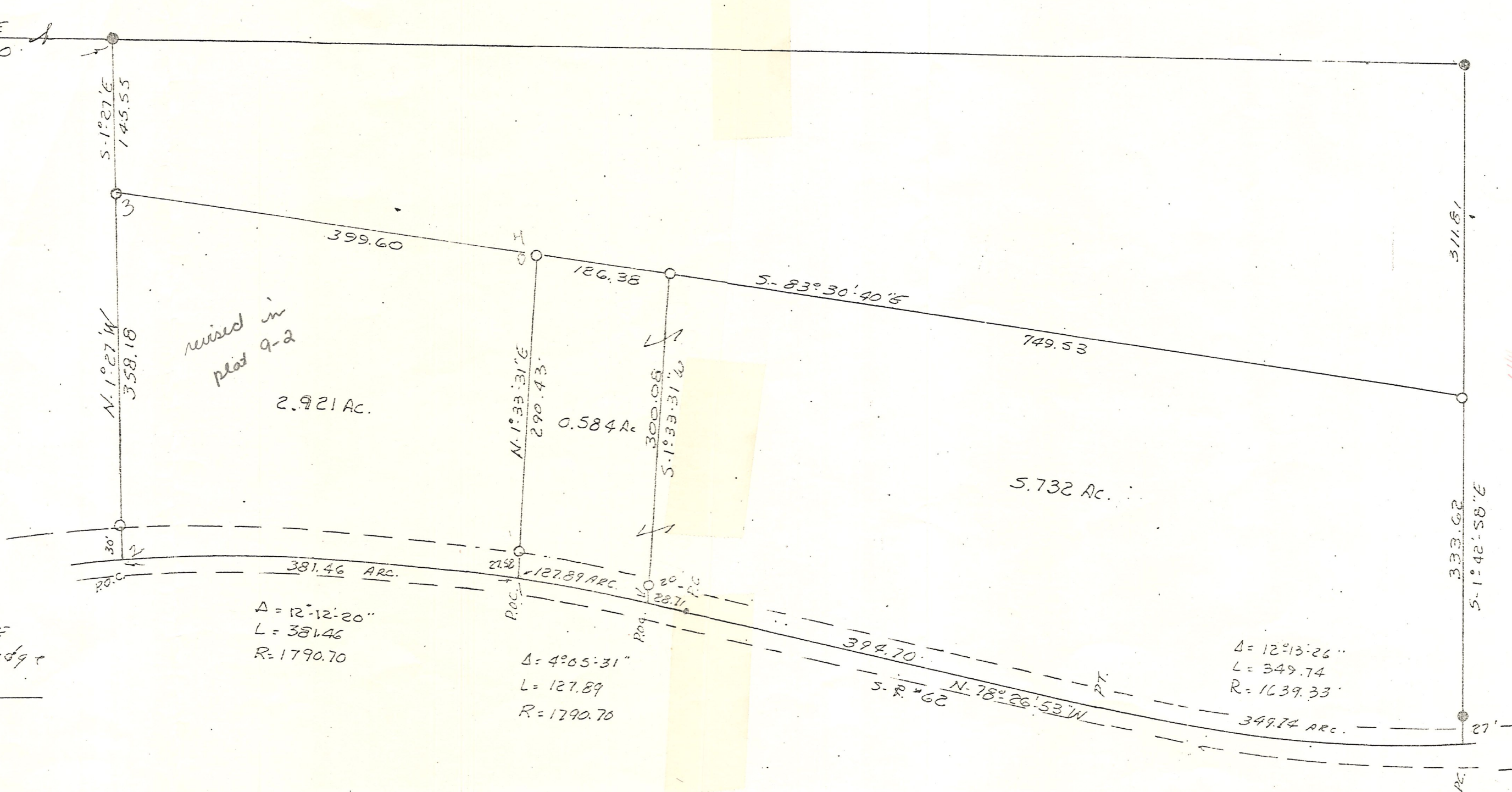
PT. LOT NO. 18 4TH. QTR.
 TWP. 10 RANGE 5
 PAINT TOWNSHIP
 HOLMES COUNTY
 OHIO

○ I.P. SET
 ● I.P. FOUND

SCALE 1"=100'

I CERTIFY THIS SURVEY TO BE
 CORRECT TO THE BEST OF MY KNOWLEDGE

Clyde E. Purdy
 CLYDE E. PURDY R.S. #4900



MAP OFFICE COPY

APPROVED BY
 THE HOLMES COUNTY HEALTH DEPARTMENT
 BY *CW.S.*
 DATE 3-28-1979
 Averages both parcels