

WES A. YODER
NIVA P. YODER
O.R. 53-834

SANITARY SEWER EASEMENT SURVEY
PAINT TOWNSHIP
4TH QTR., LOTS 12, 13, 18, & 19
T-10 N; R-5 W
HOLMES COUNTY, OHIO

SURVEYED FOR: HOLMES COUNTY ENGINEER



SCALE: 1"=60'

- 5/8" REBAR FOUND UNLESS OTHERWISE NOTED
- MAG NAIL SET
- DRILL HOLE SET
- 5/8" REBAR SET WITH I.D. CAP I.D. CAP MARKED "BAKER SURVEYING LLC"

ABE J. HERSHBERGER
GERTRUDE HERSHBERGER
JOSEPH A. HERSHBERGER
O.R. 276-3883
PN 1500977003

0.104 AC. SANITARY SEWER EASEMENT

WINESBURG ENTERPRISES, LTD.
O.R. 227-2287
PN 1500625005

0.198 AC. SANITARY SEWER EASEMENT

LOT 12 - 0.040 AC.
LOT 13 - 0.158 AC.

0.112 AC. SANITARY SEWER EASEMENT

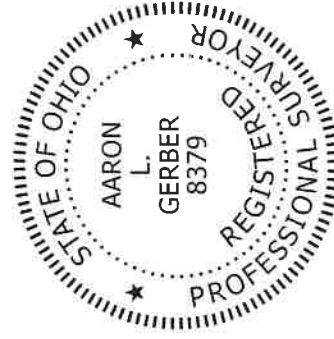
WINESBURG ENTERPRISES, LTD.
O.R. 227-2290
PN 1500977002

REFERENCES

- O.R. VOL. 276 PAGE 3883
- O.R. VOL. 227 PAGE 2287
- PLAT VOL. 19 PAGE 924
- PLAT VOL. 19 PAGE 712
- PLAT VOL. 19 PAGE 4358

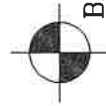
BASIS OF BEARINGS FROM OHIO STATE PLANE
COORDINATE SYSTEM, NORTH ZONE,
N.A.D. 83, 2011 ADJUSTMENT

PN 1500046004

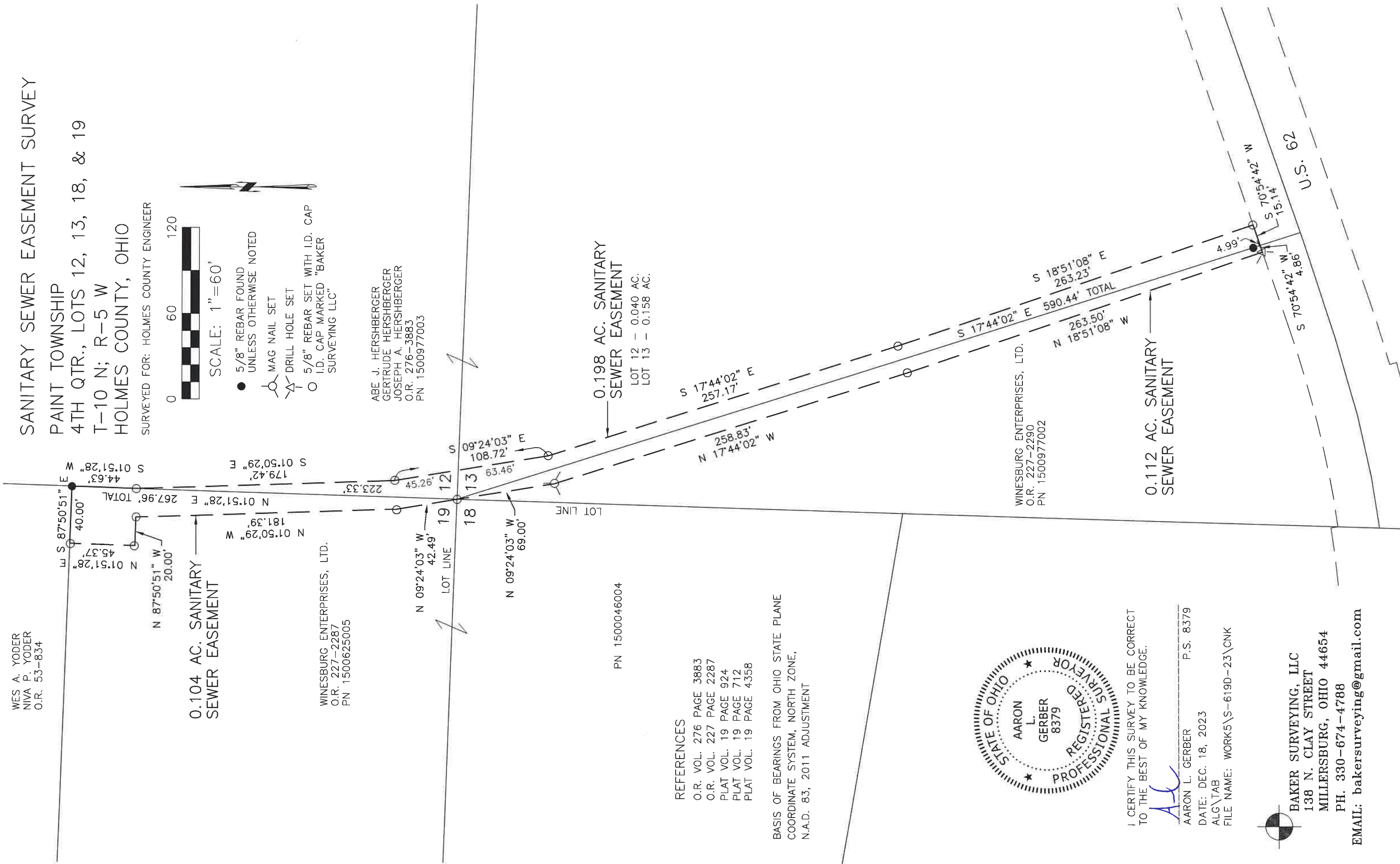


I CERTIFY THIS SURVEY TO BE CORRECT TO THE BEST OF MY KNOWLEDGE.

ALG
 AARON L. GERBER P.S. 8379
 DATE: DEC. 18, 2023
 ALG\TAB
 FILE NAME: WORK5\S-619D-23\CNK



BAKER SURVEYING, LLC
138 N. CLAY STREET
MILLERSBURG, OHIO 44654
PH. 330-674-4788
EMAIL: bakersurveying@gmail.com



U.S. 62