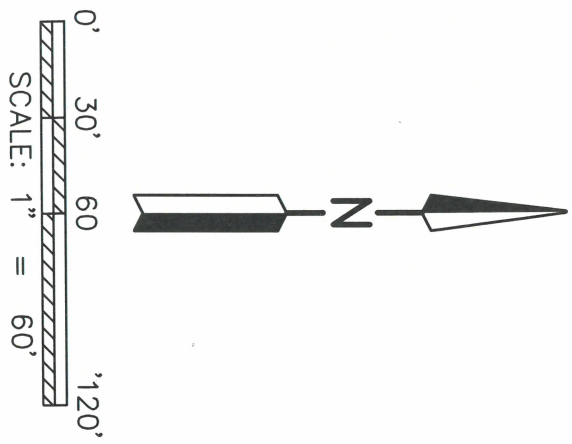
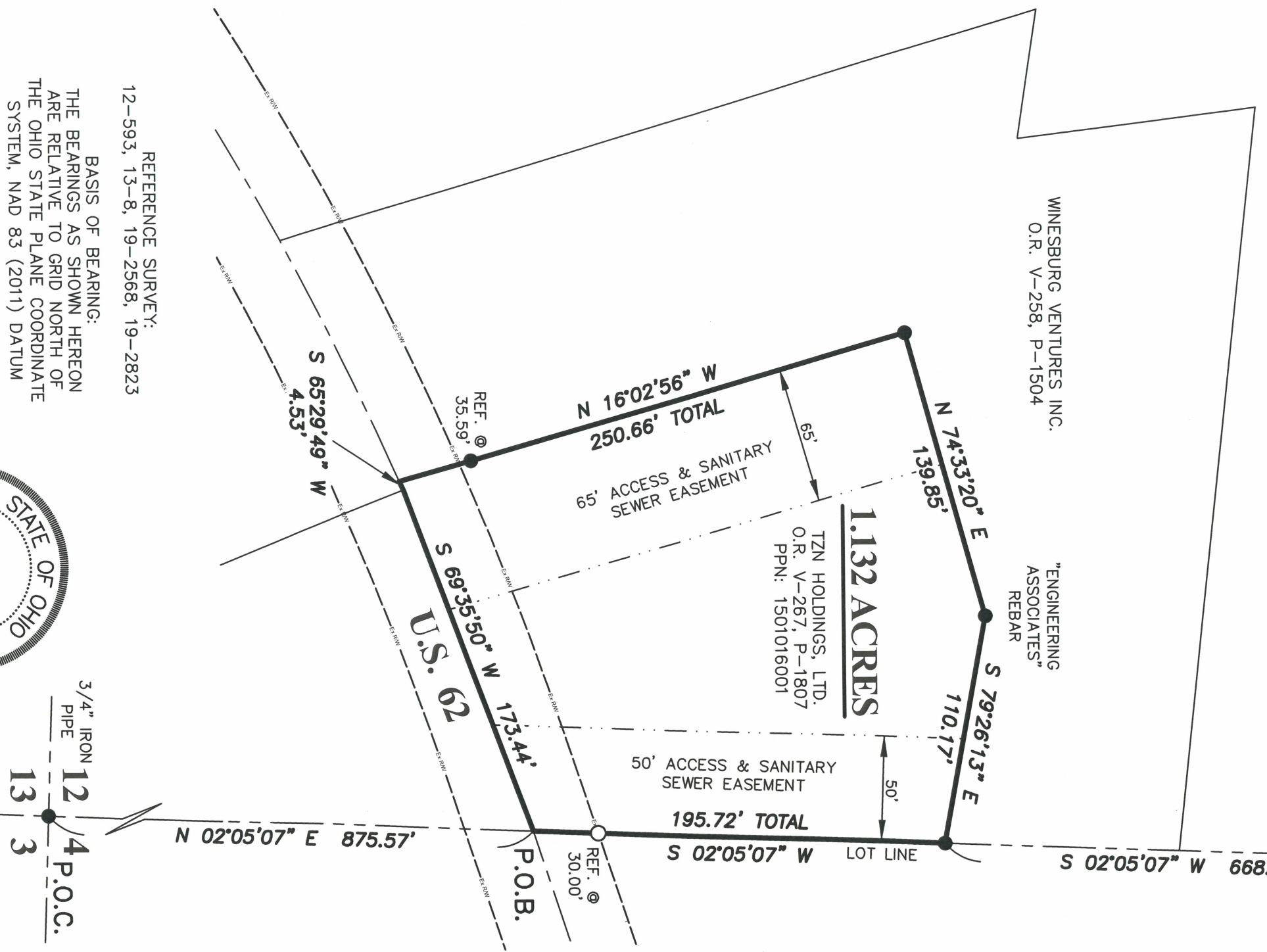


MAP OF SURVEY

4TH QUARTER, LOT 12
 T-10-N; R-5-W
 PAINT TOWNSHIP
 HOLMES COUNTY, OHIO



- LEGEND —
- STONE FOUND
 - CAPPED PIN FOUND WITH I.D. CAP MARKED "BAKER" (UNLESS NOTED)
 - 5/8" REBAR SET WITH I.D. CAP MARKED "ENGINEERING ASSOCIATES"



REFERENCE SURVEY:
 12-593, 13-8, 19-2568, 19-2823

BASIS OF BEARING:
 THE BEARINGS AS SHOWN HEREON ARE RELATIVE TO GRID NORTH OF THE OHIO STATE PLANE COORDINATE SYSTEM, NAD 83 (2011) DATUM



EA
 ENGINEERING ASSOCIATES

1935 EAGLE PASS
 WOODSTER, OHIO 44691
 PHONE : (330) 345-6556
 www.eaohio.com

Distances shown hereon are expressed in feet and decimal parts thereof, bearings are used to express angles only, iron pins or monuments were found or set as indicated hereon. All of which I believe to be correct to the best of my knowledge.

By: Jason J. Lingenfelter P.S. #8499 DATE: 11-21-2023