

PAINT TOWNSHIP
 HOLMES COUNTY, OHIO
 LOT 10, 4TH QUARTER, T-10N, R-5W



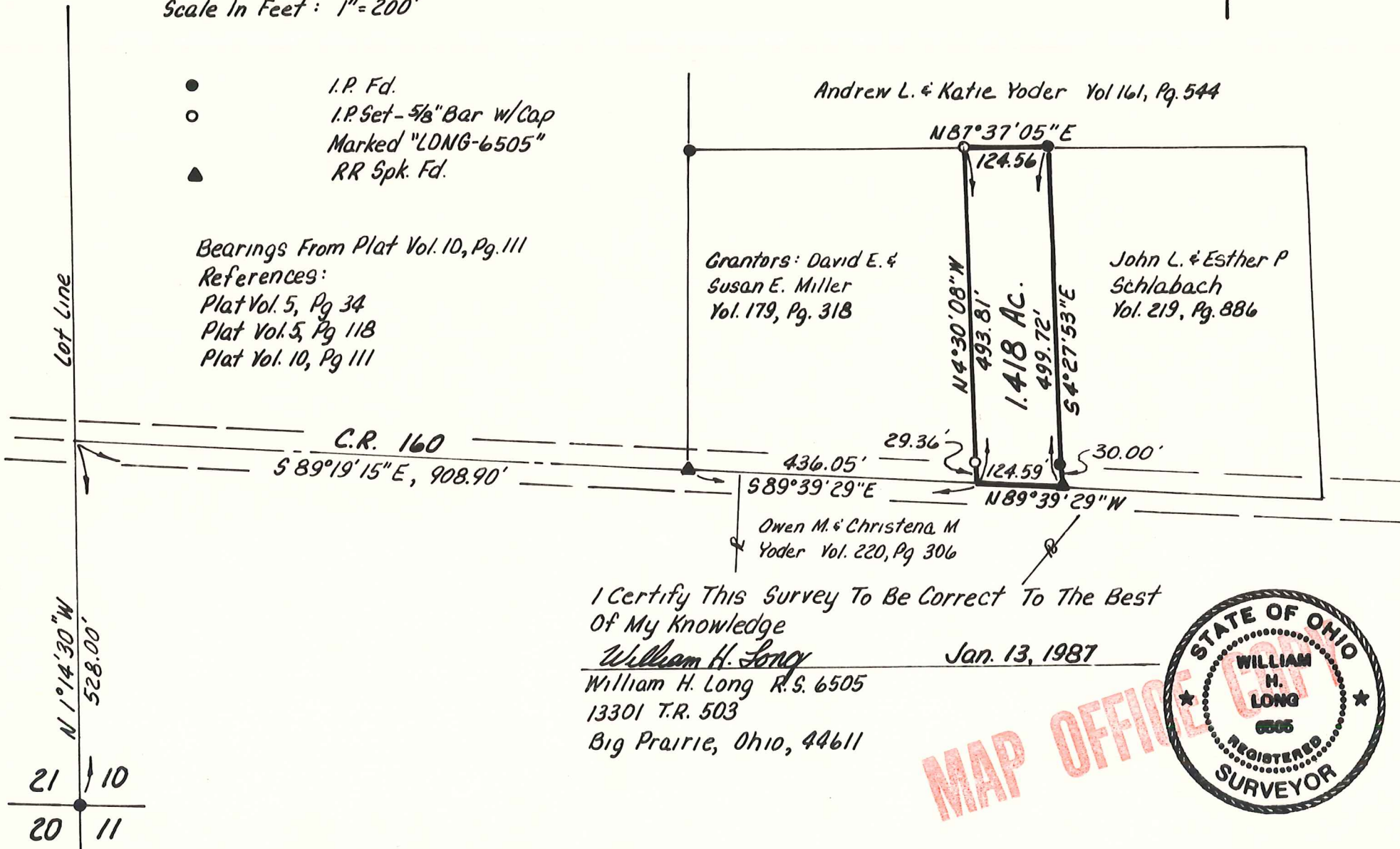
Scale In Feet: 1" = 200'

Surveyed For Mr. David E. Miller



- I.P. Fd.
- I.P. Set - 5/8" Bar w/ Cap
- ▲ Marked "LDNG-6505"
- ▲ RR Spk. Fd.

Bearings From Plat Vol. 10, Pg. 111
 References:
 Plat Vol. 5, Pg. 34
 Plat Vol. 5, Pg. 118
 Plat Vol. 10, Pg. 111



I Certify This Survey To Be Correct To The Best Of My Knowledge

William H. Long
 William H. Long R.S. 6505
 13301 T.R. 503
 Big Prairie, Ohio, 44611

Jan. 13, 1987

