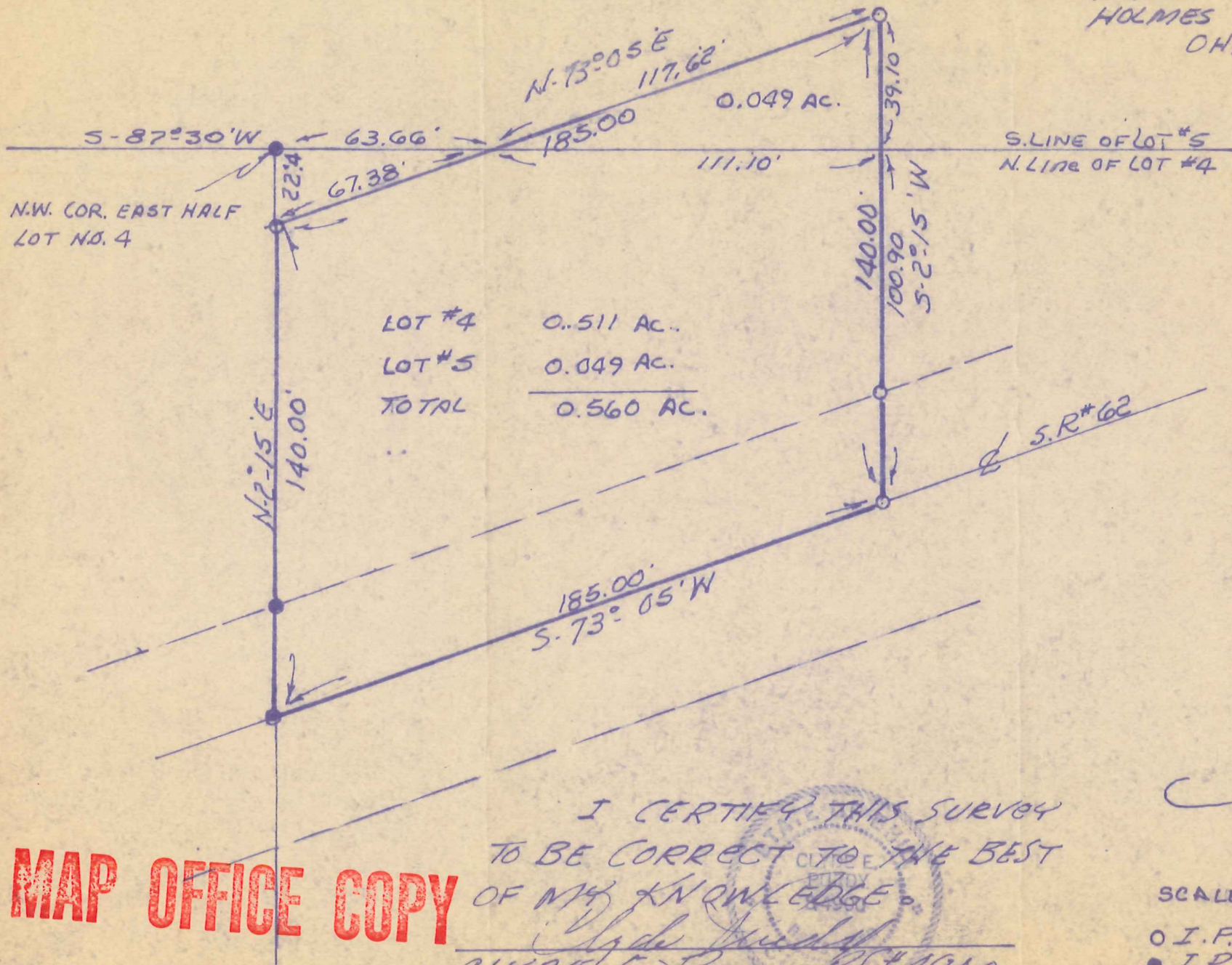


PAINT TOWNSHIP  
 PT. LOT NO. 4  
 4TH. QTR. TOWNSHIP  
 TWP. 10 RANGES 5  
 HOLMES COUNTY  
 OHIO

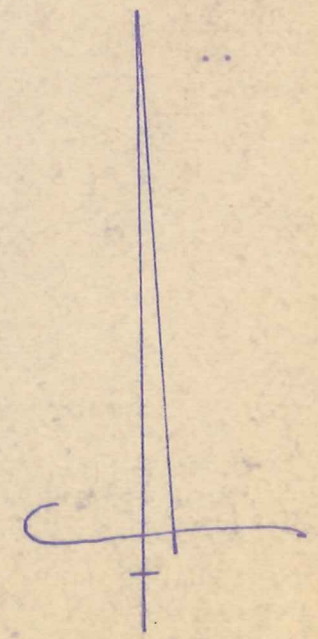
MM 1978



**MAP OFFICE COPY**

I CERTIFY THIS SURVEY  
 TO BE CORRECT TO THE BEST  
 OF MY KNOWLEDGE.

*Clyde E. Ford*  
 CLYDE E. FORD #4980



SCALE 1" = 40'

○ I. P. SET  
 ● I. P. FOUND