

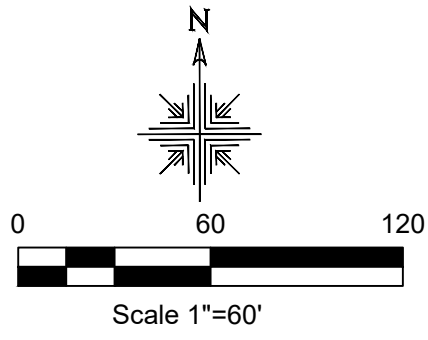
**Retracement Survey**  
**Village of Winesburg**  
**Part of Lot 12**  
**Paint Township**  
**3rd Qtr. Lot 38**  
**T-10 N; R-4 W**  
**Holmes County, Ohio**

SURVEYED FOR: Tekton Engineering

REFERENCES:

Deeds as shown  
 Plat Vol. 8 Page 563  
 Plat Vol. 19 Page 780  
 Plat Vol. 17 Page 298  
 Plat Vol. 19 Page 290  
 Plat Vol. 19 Page 197  
 Plat Vol. 19 Page 4590  
 Plat Vol. 14 Page 712  
 Plat Vol. 19 Page 2664  
 Plat Vol. 19 Page 4389  
 unrecorded plats on file at map office

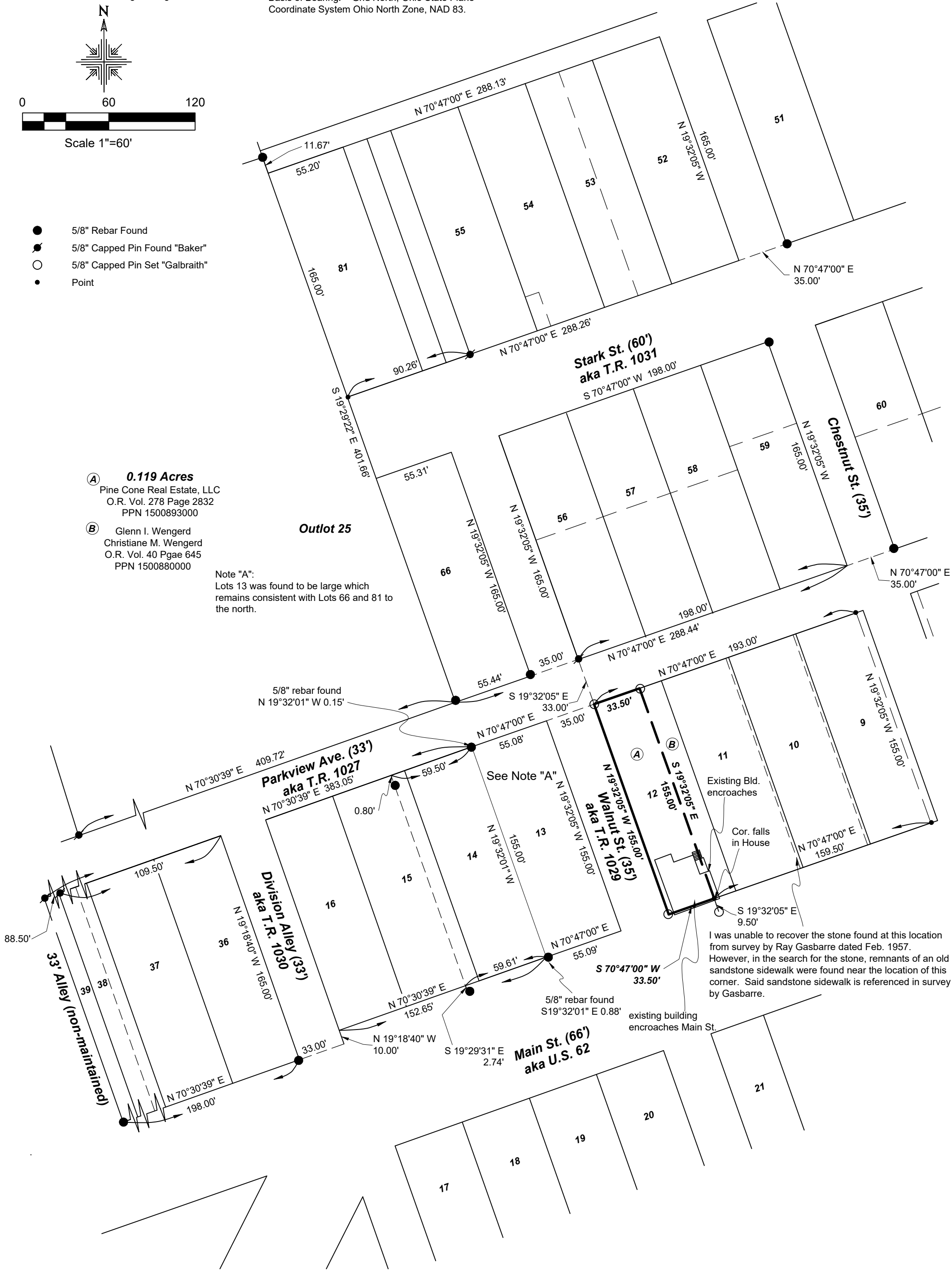
Basis of Bearing: Grid North, Ohio State Plane  
 Coordinate System Ohio North Zone, NAD 83.



- 5/8" Rebar Found
- 5/8" Capped Pin Found "Baker"
- 5/8" Capped Pin Set "Galbraith"
- Point

- (A) **0.119 Acres**  
 Pine Cone Real Estate, LLC  
 O.R. Vol. 278 Page 2832  
 PPN 1500893000
- (B) Glenn I. Wengerd  
 Christiane M. Wengerd  
 O.R. Vol. 40 Page 645  
 PPN 1500880000

Note "A":  
 Lots 13 was found to be large which  
 remains consistent with Lots 66 and 81 to  
 the north.



I certify this survey to be correct to the best of  
 my knowledge.

*Caleb Jerome Galbraith*

Caleb Jerome Galbraith P.S. 8703  
 Date: July 14, 2022  
 Job ID: 9422-P11A

Pioneer Surveying & Services, LLC.  
 5434 Township Road 377  
 Millerburg, Ohio 44654  
 Phone: 330-231-0497  
 Email: caleb@pioneersurveyingandservices.com

