

25' EASEMENT FOR SEWER

(25' PERMANENT EASEMENT,
35' TEMPORARY EASEMENT
FOR CONSTRUCTION.)

VILLAGE OF WINESBURG

PAINT TOWNSHIP

3RD. QTR. LOT 3B

T-10N; R-4W

HOLMES COUNTY, OHIO



SCALE: 1" = 30'

REFERENCES:

DEED VOL. 262 PAGE 333

" " 267 " 356 & 411

BEARINGS FROM PLAT VOL. 14 PAGE 712



MAP OFFICE COPY

I CERTIFY THIS PLAT TO BE CORRECT
TO THE BEST OF MY KNOWLEDGE.

Donald C. Baker

DONALD C. BAKER P.S. 6938

DONALD C. BAKER SURVEYING

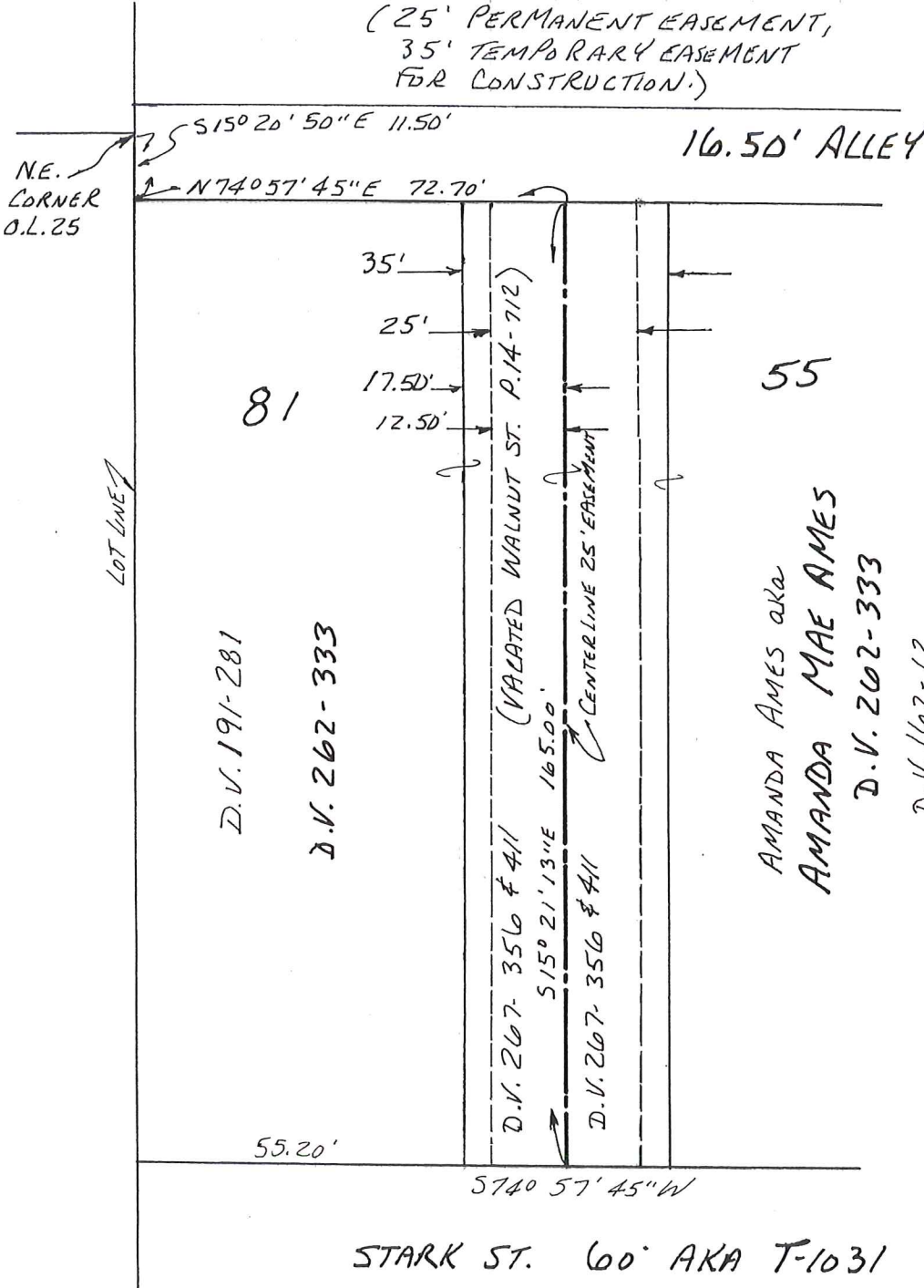
138 N. CLAY ST.

MILLERSBURG OH 44654

PH. 330-674 4788

APRIL 25, 2001

32301-M.I.D.



STARK ST. 60' AKA T-1031