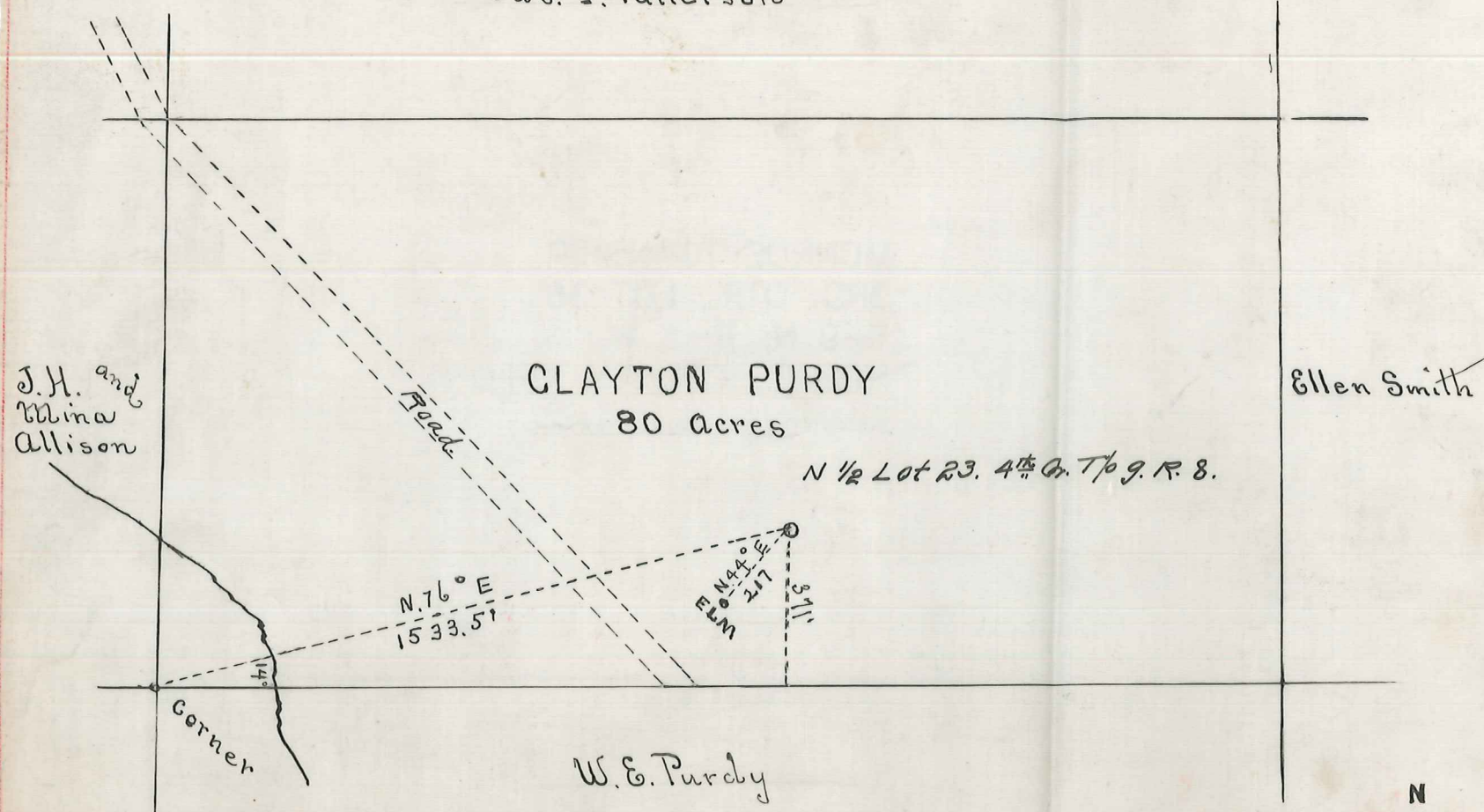


Jas. T. Patterson



MAP

of the

Clayton Purdy Farm

Located in N. 1/2 Lot 23. 4th Qr Tp 9 R. 8

Worroe Tp. "School Lands" Holmes Co. Ohio.

Scale 1 inch = 400 Ft.

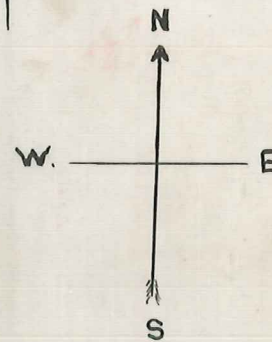
H. H. Church,
Surveyor.

Certificate of Engineer

I, the undersigned, hereby certify that this map is true and correct and shows all the information required by Section 973 of the General Code and covers the period ending July 19, 1914 as surveyed and mapped by me

H. H. Church
Surveying Engineer

Acknowledged before me a Clerk of Court this 21st day of July, 1914
J. W. Street
Clerk



- ⊙ Oil wells producing at time of survey.
- Oil wells located but not drilled.
- ⊙ Oil wells outside limits of farm.
- Survey lines
- Farm lines