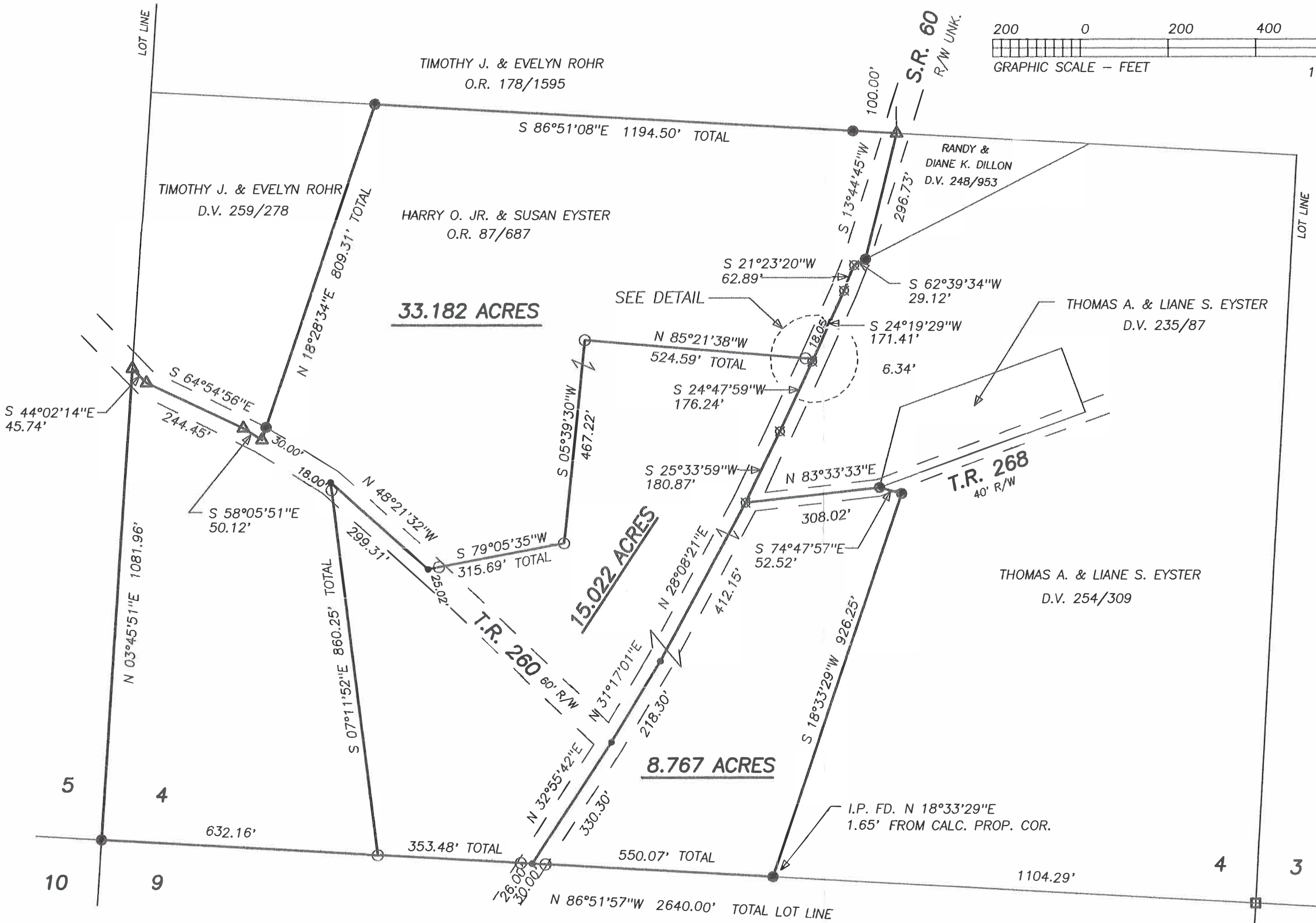
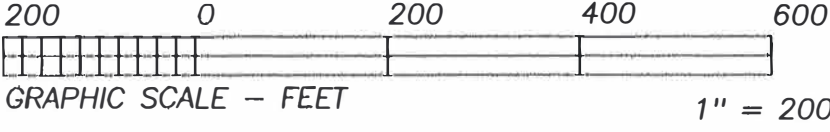


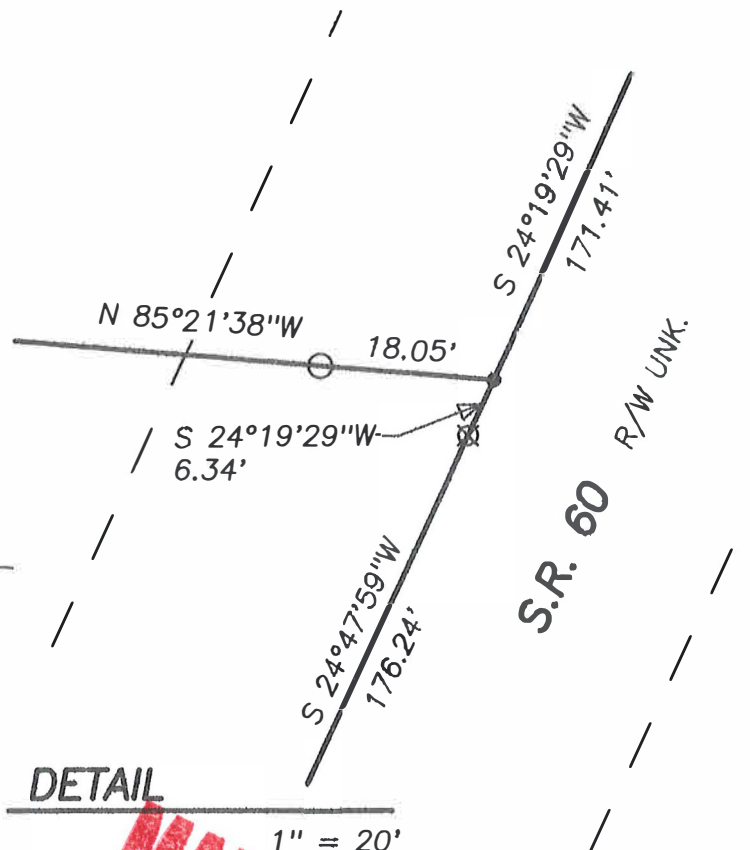


BEARINGS ESTABLISHED FROM PLAT 14/176 AND ARE TO DENOTE ANGULAR MEASUREMENT ONLY.

RECORDERS SPACE



REFERENCE DOCUMENTS:  
TAX MAPS  
DEEDS AS SHOWN  
SURVEY PLATS: 10/735,12/849,  
14/176,19/319



### HEARTLAND SURVEYING, INC

Jim Shamp  
5210 T.R. 257 MILLERSBURG, OH 44654  
PH: 330-674-4698 FAX: 330-674-0897

- LEGEND:
- = STONE FD.
  - = 5/8" RE-BAR FD. UNLESS NOTED
  - = POINT-OF-DEPARTURE
  - = 5/8" X 30" RE-BAR W/PLASTIC I.D. CAP SET
  - ⊠ = R/R SPIKE SET
  - △ = R/R SPIKE FD.
  - ⊞ = P.K. NAIL SET - PREVIOUS SURVEY

SURVEY		STATE	
HARRY O. JR. & SUSAN EYSTER		OHIO	
COUNTY	TWP.	RNG.	TWP.
HOLMES	MONROE	8 WEST	9 NORTH
PART OF LOT 4 4TH QUARTER		JOB NO.	081102

NOTE: PART OF THIS SURVEY WAS CONDUCTED PRIOR TO THIS DATE - SEE PLATS 12/849 & 14/176.

I CERTIFY THIS PLAT & SURVEY TO BE CORRECT TO THE BEST OF MY KNOWLEDGE:

*Jim Shamp*

JIM SHAMP, REG. SUR. NO. S-6088

12-19-08

DATE

