

West Part of LOT 6, 3rd Q. T. 9. R. 8.

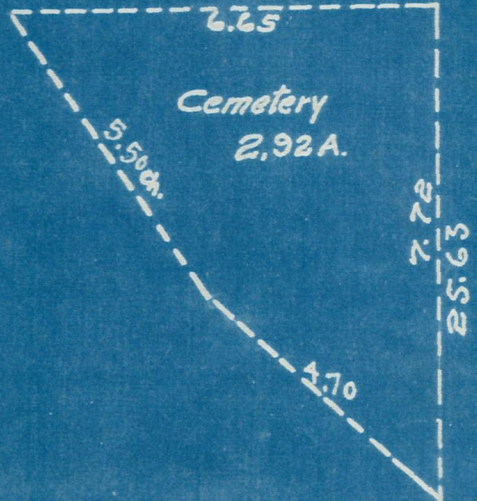
Surveyed for The East Ohio Gas Co. at the request of W.H. McFarland to locate the east line of the Lease on the west part of said Lot, marked C-D. This line was located by cutting the Lands owned by A. Mackey in equal parts by running a division line North and South thru said Lot as shown. Also located Well No. 1, as shown and made measurements to a well now being drilled on East part of said Lot, as shown.

Surveyed Oct. 27-31, 1924.
 Note- Line A-B shows middle of Lot.
 W.L. Reidenbach
 Deputy County Surveyor.

Scale 3 ch. = 1 inch

50.92 A.

50.92 A.



LOT 7
 LOT 6
 Iron corner
 25.63 ch.
 LOT 11.
 LOT 6.
 Iron corner
 Ref. Hick 8 N 82 W 4 L.

CA. 40.90
 19.88 ch.
 20.45 ch.
 6.10
 25.63
 76' 41"
 306.04 ft
 314.5 ft
 296.95'
 284 ft
 57 links
 2x2x22"
 57 links
 2x2x22"
 20.43 ch.
 19.86
 40.86 ch.
 D.B.
 25.63
 49 1/4 L.
 Ref. Hick 8 N 88 1/2 W