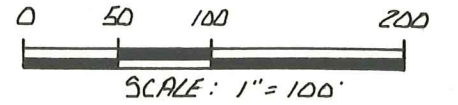


MONROE TOWNSHIP 2ND QTR.
 LOT 6 T-9N R-8W
 HOLMES COUNTY OHIO



- IRON PIN FOUND
- ▲ R.R. SPIKE SET
- 5/8" REBAR WITH I.D. CAP SET
I.D. CAP MARKED "BAKER 6938"

REFERENCES:

PLAT VOL. 10 PAGE 570
 PLAT VOL. 10 PAGE 417
 PLAT VOL. 10 PAGE 364
 BEARING ALONG WEST LINE OF
 LOT 6 FROM PLAT VOL. 10 PAGE 364

NOTE: EXISTING 50' EASEMENT
 FOR ACCESS TO ESTELLE EISENBERG
 PROPERTY - SEE DEED VOL. 225 PAGE 914
 ESTELLE EISENBERG
 233-278

GRANTOR:
 THE KILLBUCK EQUIPMENT CO., INC.
 DEED VOL. 225 PAGE 914

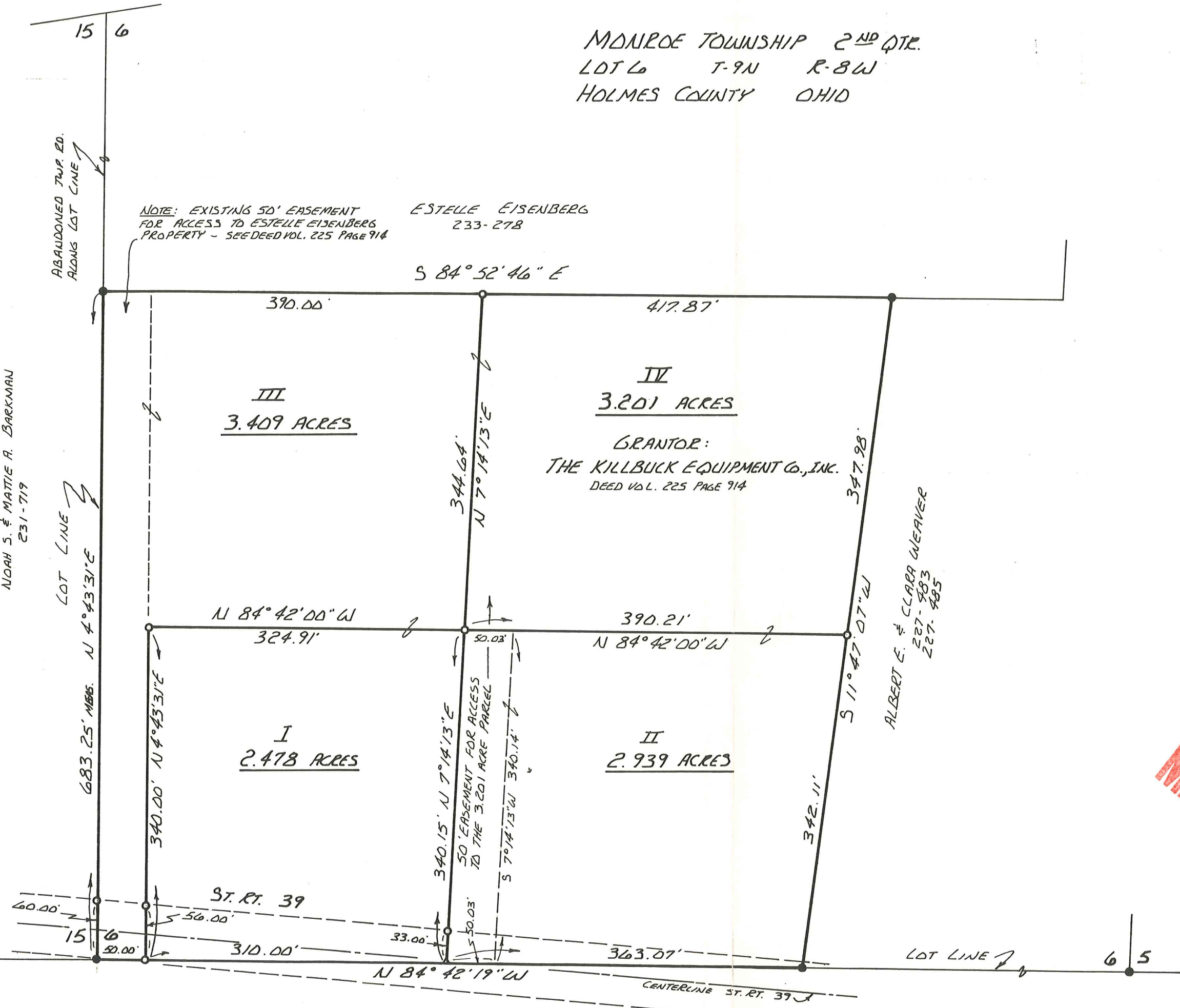
ALBERT E. & CLARA WEAVER
 227-583
 227-985

III
3.409 ACRES

IV
3.201 ACRES

I
2.478 ACRES

II
2.939 ACRES



MAP OF THE COPY

I CERTIFY THIS SURVEY TO BE CORRECT
 TO THE BEST OF MY KNOWLEDGE.
 Donald C. Baker
 DONALD C. BAKER P.S. 6938
 4321 TR 252
 GLENMONT OH.
 JULY 7, 1988

NOAH S. & MATTIE A. BARKMAN
 231-719

LOT LINE
 683.25' MEAS. N 4°43'31"E

ABANDONED TWP. ED.
 ALONG LOT LINE

ST. RT. 39

CENTERLINE ST. RT. 39