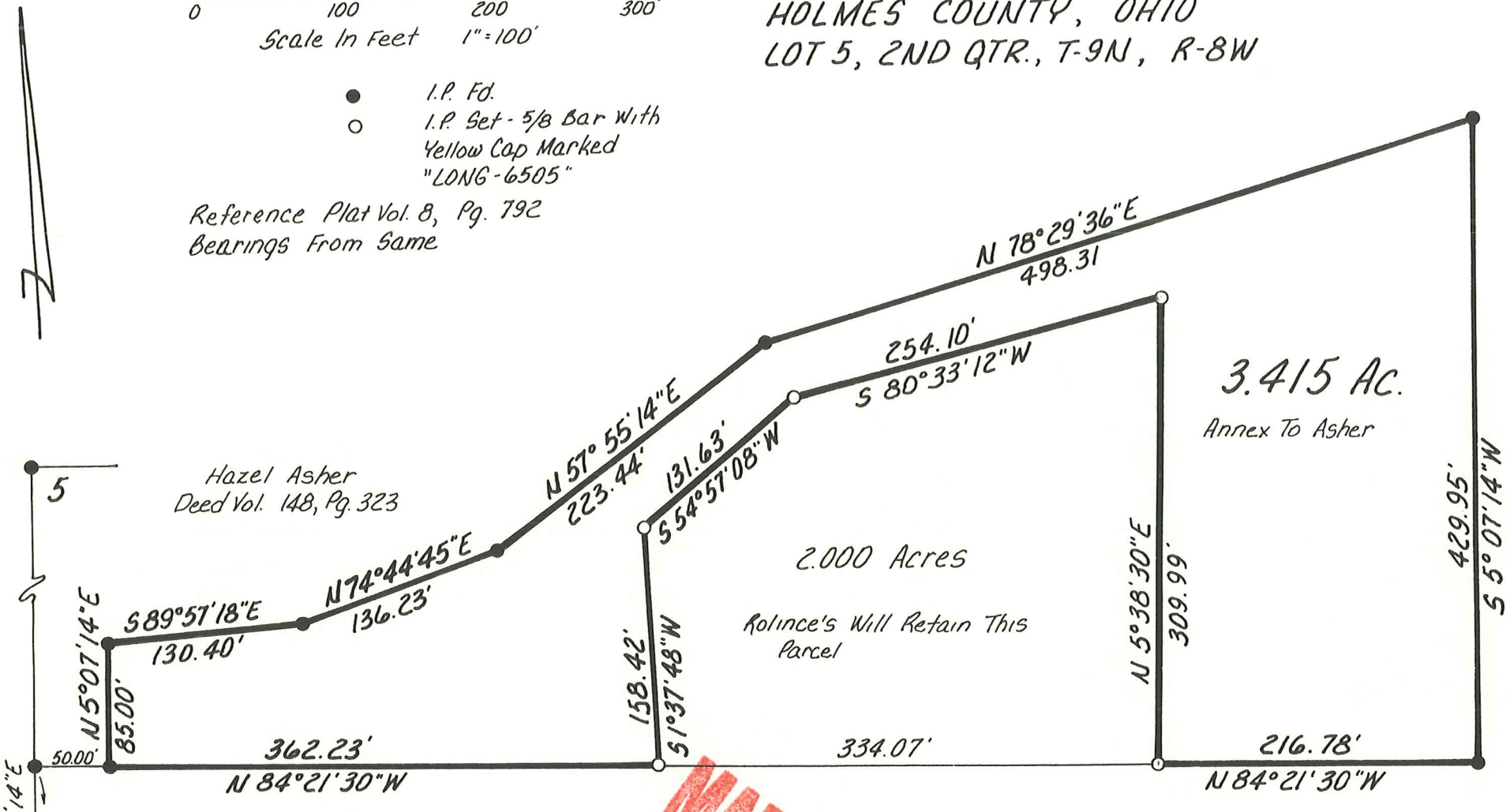


MONROE TOWNSHIP
HOLMES COUNTY, OHIO
LOT 5, 2ND QTR., T-9N, R-8W



- I.P. Fd.
- I.P. Set - 5/8 Bar With Yellow Cap Marked "LONG-6505"

Reference Plat Vol. 8, Pg. 792
Bearings From Same



Hazel Asher
Deed Vol. 148, Pg. 323

2.000 Acres

Rolince's Will Retain This Parcel

3.415 Ac.
Annex To Asher

Wayne & Melinda J. Rolince, Grantor
Deed Vol. 214, Pg 402

I Certify This Survey To Be Correct To The
Best Of My Knowledge.

William H. Long Sept. 26, 1984
William H. Long R.S. 6505
13301 T.R. 503
Big Prairie, Ohio 44611

