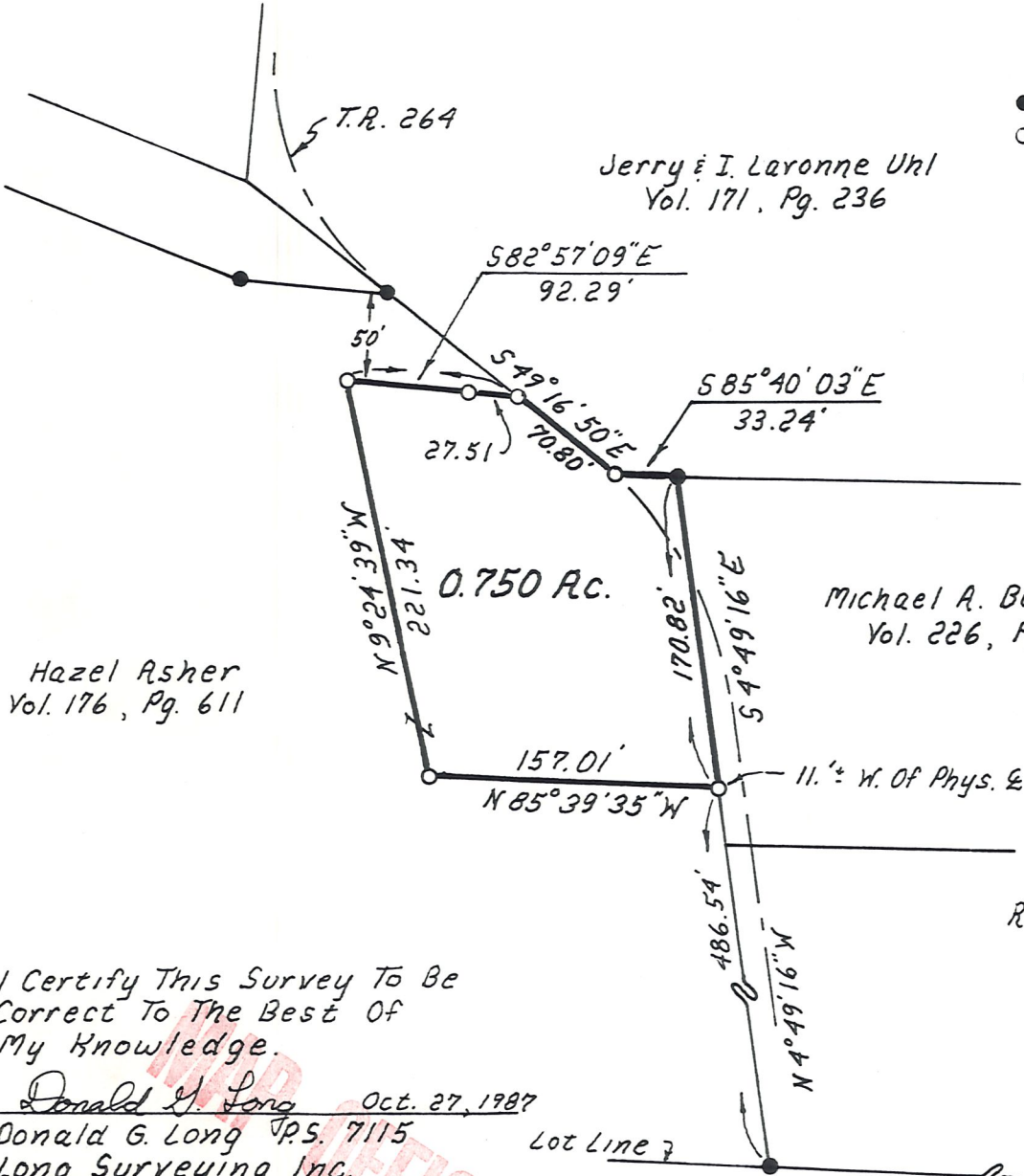
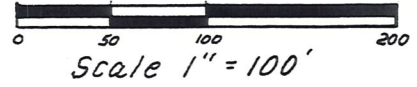


MONROE TOWNSHIP  
HOLMES COUNTY, OHIO  
LOT 17, 1ST QTR., T-9, R-8

This Parcel Surveyed For Purposes Of Obtaining  
A Mortgage. No Transfer Is Planned,  
Therefore The Health Department And  
Planning Commission Were Not Asked  
For Approval.



Jerry & I. Laronne Uhl  
Vol. 171, Pg. 236

Michael A. Barnhart  
Vol. 226, Pg. 107

Hazel Asher  
Vol. 176, Pg. 611

- Iron Pin Found
- Iron Pin Set - 5/8" Re-Bar  
With Yellow Cap Marked  
"LONG 7115"

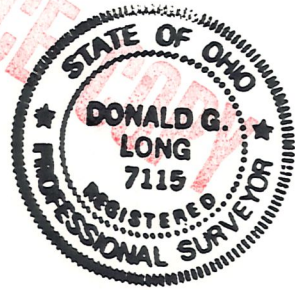
Note:  
I.P.'s In Road  
Have No Caps.

Bearings From P.V. 8 Pg. 241

- References:
- Plat Vol. 8, Pg. 241
  - Plat Vol. 8, Pg. 40
  - Deed Vol. 171, Pg. 236
  - Deed Vol. 81, Pg. 155

I Certify This Survey To Be  
Correct To The Best Of  
My Knowledge.

Donald G. Long Oct. 27, 1987  
Donald G. Long P.S. 7115  
Long Surveying Inc.  
13301 T.R. 503.  
Big Prairie, Ohio 44611



570.24'	17	12
N84°04'58"W	16	13