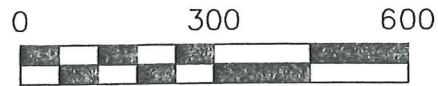


MONROE TOWNSHIP
1ST. QTR., LOTS 14 & 15
T-9 N; R-8 W
HOLMES COUNTY, OHIO

PROPERTY LINE SURVEY

SURVEYED FOR: MOHLER VIEW FARMSTEAD, LTD.

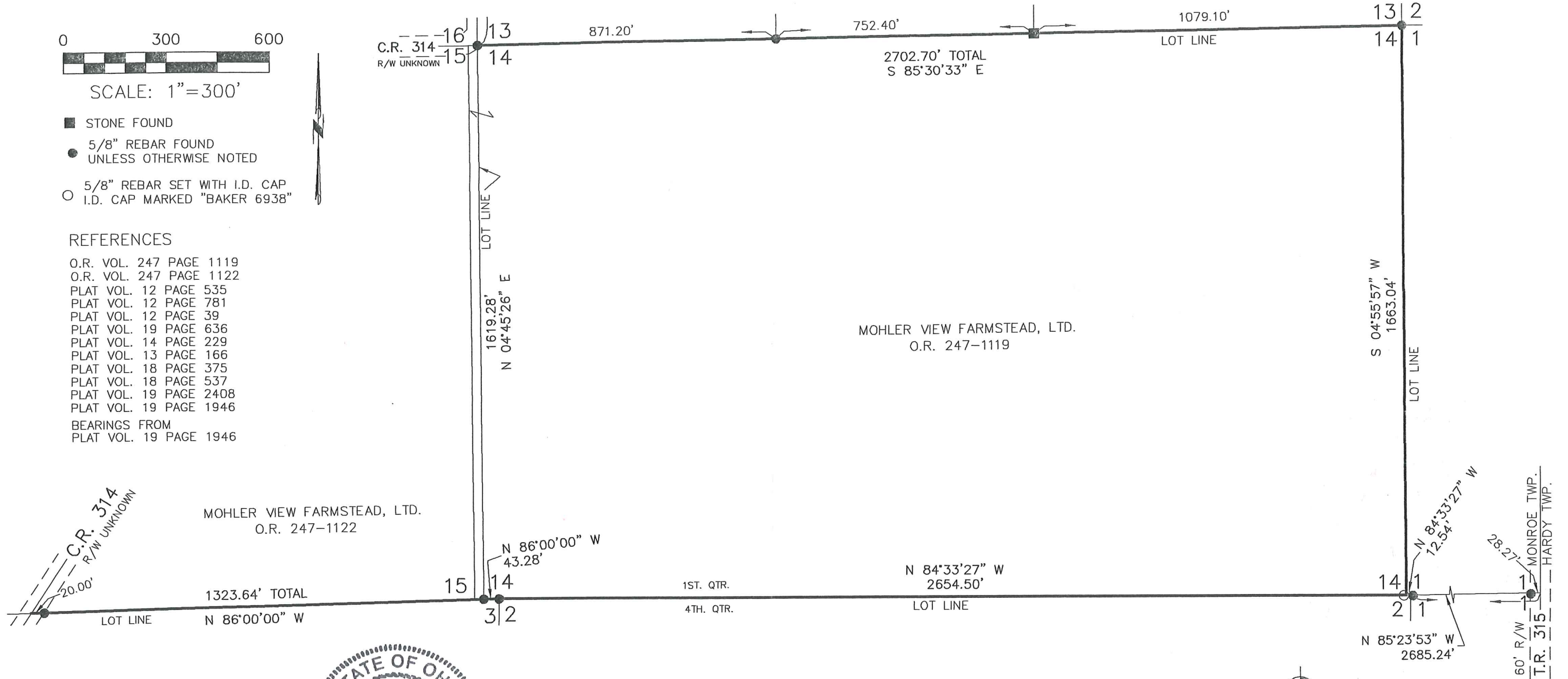


SCALE: 1"=300'

- STONE FOUND
- 5/8" REBAR FOUND
UNLESS OTHERWISE NOTED
- 5/8" REBAR SET WITH I.D. CAP
I.D. CAP MARKED "BAKER 6938"

REFERENCES

- O.R. VOL. 247 PAGE 1119
 - O.R. VOL. 247 PAGE 1122
 - PLAT VOL. 12 PAGE 535
 - PLAT VOL. 12 PAGE 781
 - PLAT VOL. 12 PAGE 39
 - PLAT VOL. 19 PAGE 636
 - PLAT VOL. 14 PAGE 229
 - PLAT VOL. 13 PAGE 166
 - PLAT VOL. 18 PAGE 375
 - PLAT VOL. 18 PAGE 537
 - PLAT VOL. 19 PAGE 2408
 - PLAT VOL. 19 PAGE 1946
- BEARINGS FROM
PLAT VOL. 19 PAGE 1946



I CERTIFY THIS SURVEY TO BE CORRECT TO THE BEST OF MY KNOWLEDGE.

Donald C. Baker
 DONALD C. BAKER P.S. 6938
 DATE: JAN. 27, 2014
 ALG\CJG\KES
 FILE NAME: WORK4\S-3-14



**PRELIMINARY
FOR REVIEW ONLY**



DONALD C. BAKER SURVEYING
 138 N. CLAY STREET
 MILLERSBURG, OHIO 44654
 PH. 330-674-4788
 FAX 330-674-6027