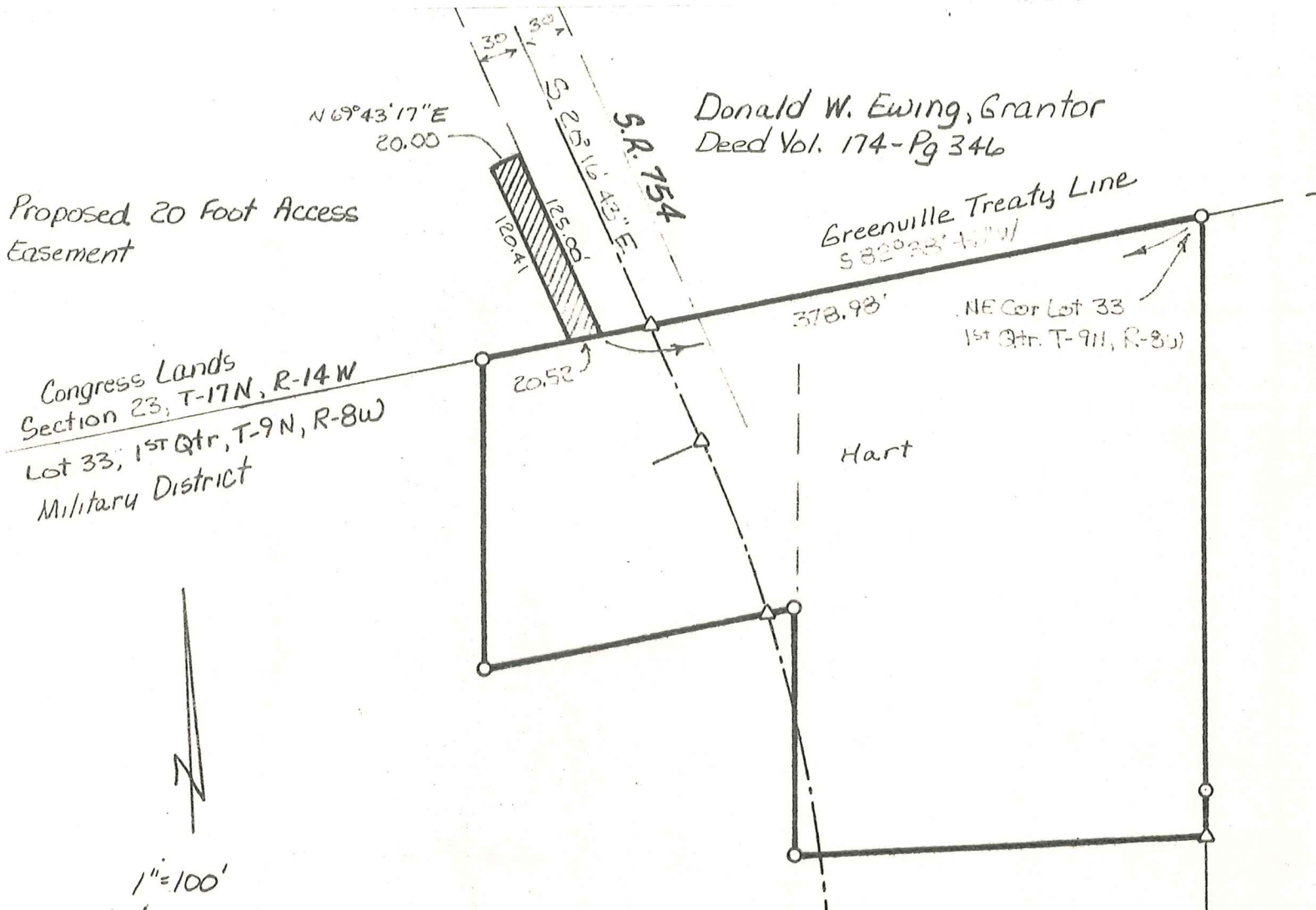


ACCESS EASEMENT
 MONROE TOWNSHIP
 HOLMES COUNTY, OHIO
 SEC. 23, T-17N, R-14W



Proposed 20 Foot Access Easement

Donald W. Ewing, Grantor
 Deed Vol. 174-Pg 346

Congress Lands
 Section 23, T-17N, R-14W
 Lot 33, 1st Qtr, T-9N, R-8W
 Military District

Greenville Treaty Line
 S 82° 28' 40\"/>

NE Cor Lot 33
 1st Qtr, T-9N, R-8W

Hart



Prepared By William H. Long R.S. 6505

MAP OFFICE COPY

I Certify This Survey To Be Correct
 To The Best Of My Knowledge.

William H. Long
 William H. Long R.S. 6505
 13301 T.R. 503
 Big Prairie, Ohio 44611