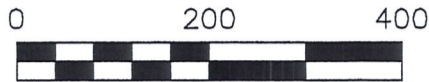


MONROE TOWNSHIP
 N.E. & S.E. QTRS. SECTION 20
 T-17 N; R-14 W
 HOLMES COUNTY, OHIO



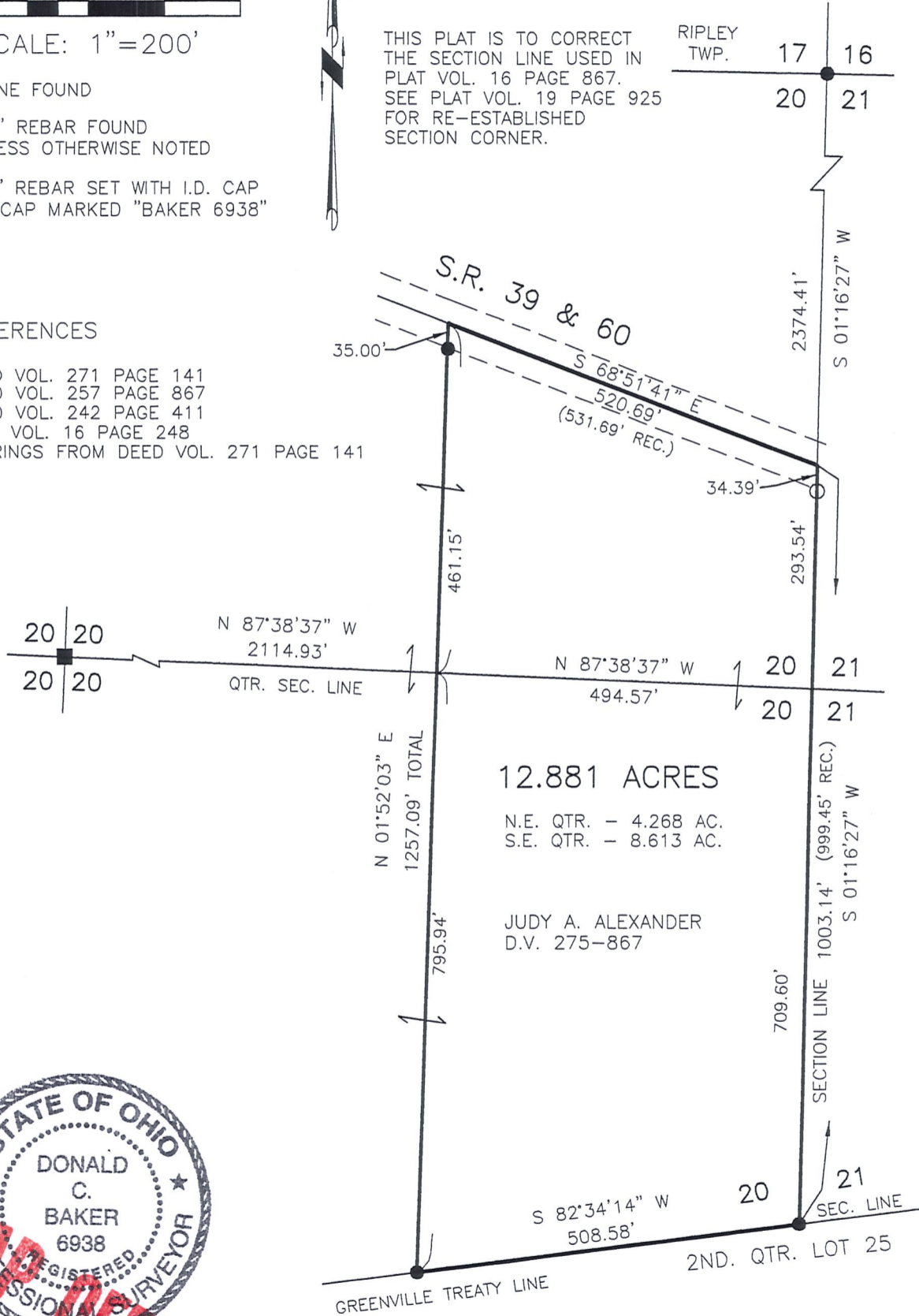
SCALE: 1"=200'

- STONE FOUND
- 5/8" REBAR FOUND
UNLESS OTHERWISE NOTED
- 5/8" REBAR SET WITH I.D. CAP
I.D. CAP MARKED "BAKER 6938"

REFERENCES

DEED VOL. 271 PAGE 141
 DEED VOL. 257 PAGE 867
 DEED VOL. 242 PAGE 411
 PLAT VOL. 16 PAGE 248
 BEARINGS FROM DEED VOL. 271 PAGE 141

THIS PLAT IS TO CORRECT
 THE SECTION LINE USED IN
 PLAT VOL. 16 PAGE 867.
 SEE PLAT VOL. 19 PAGE 925
 FOR RE-ESTABLISHED
 SECTION CORNER.



I CERTIFY THIS SURVEY TO BE CORRECT
 TO THE BEST OF MY KNOWLEDGE.

Donald C. Baker
 DONALD C. BAKER P.S. 6938
 DATE: APRIL 13, 2007

FILE NAME: WORK3\S-881B-06/MD



DONALD C. BAKER SURVEYING
 138 N. CLAY STREET
 MILLERSBURG, OHIO 44654
 PH. 330-674-4788
 FAX 330-674-6027

OFFICE COPY