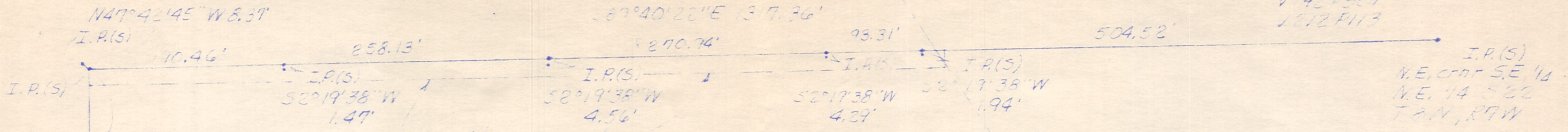


Robert E. Young V139 P35 V187 P520

Approximate C.P. 150

Unita Bucklew

V 42 P301
1872 P113



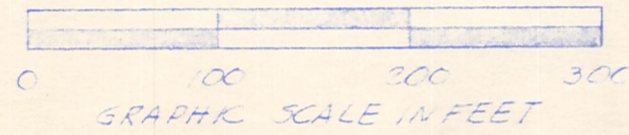
N.W. cor SE 1/4
NE 1/4 S22
T8N, R7W

1/2 wide easement
for lane purposes
only.

I.P.(S)
N.E. cor SE 1/4
N.E. 1/4 S22
T8N, R7W

Run permit
V 50 P237
180 537

NORTH

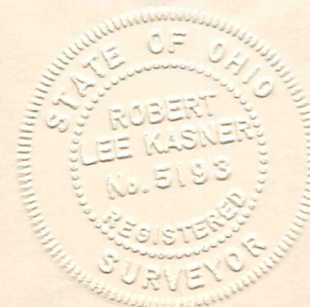


Robert E. Young
V134 P246

N2°59'02\"/>

PLAT OF A SURVEY FOR
ROBERT E. & FRANCIS
YOUNG
Known as part of the N.E.
1/4 S22, T8N, R7W of
Mechanic Twp., Hol. Co., Ohio

Stone found at
S.W. cor of S22 survey 6/20, 2/25/1860
S.E. 1/4 N.E. 1/4
S22, T8N, R7W
Mechanic Twp., Hol. Co., Ohio



Robert L. Kasner P.S. 5193, P.E. 28820

8/22/81

MAP OFFICE COPY