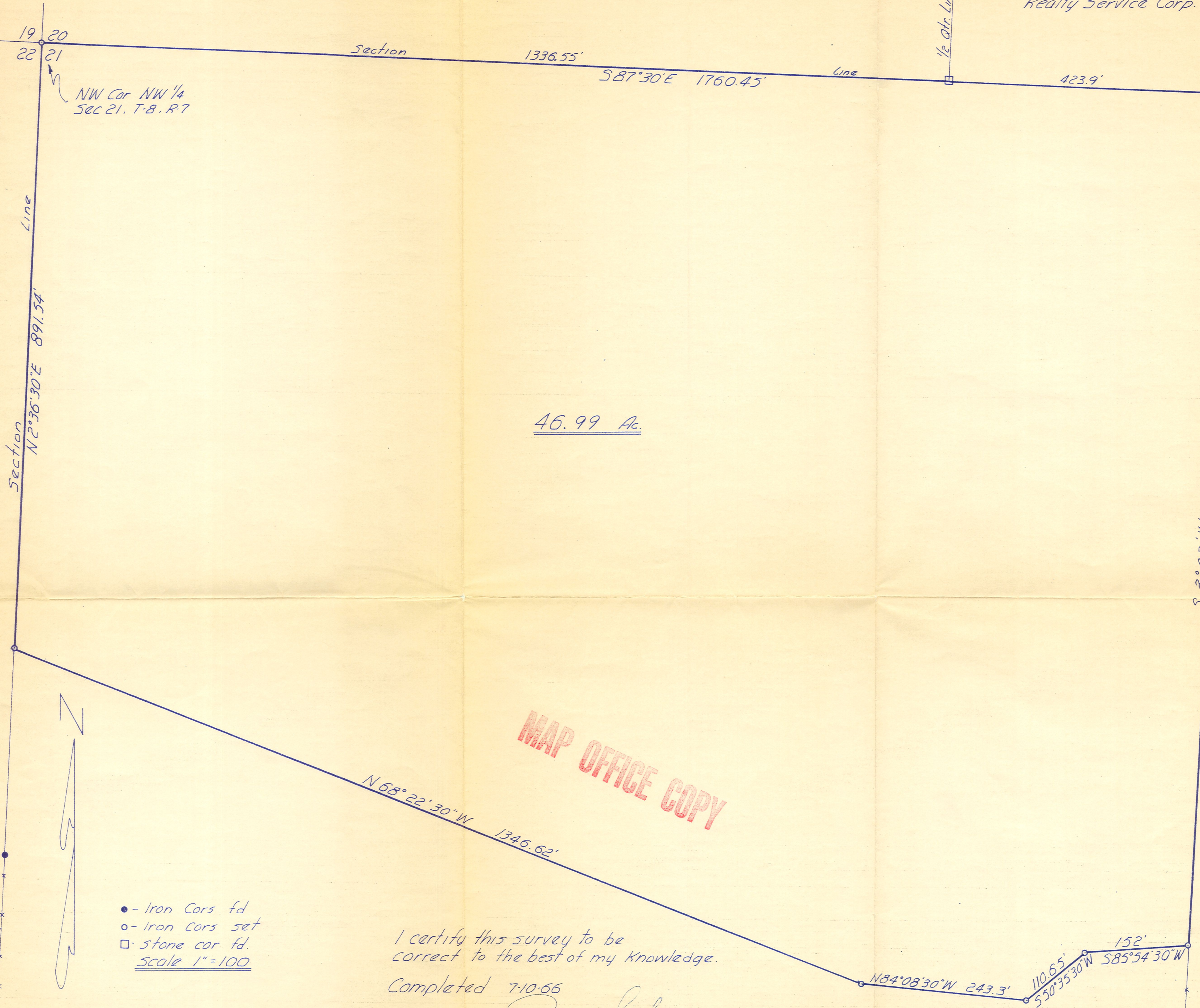


Mechanic Township  
NW Qtr. Section 21  
Twp 8 Range 7  
Holmes County, Ohio

Holmes Co. Engr.

made for  
American  
Realty Service Corp.



19 20  
22 21

NW Cor NW 1/4  
Sec 21, T-8, R-7

Section 1336.55'

S87°30'E 1760.45'

1/2 Atr. Line

423.9'

46.99 Ac.

MAP OFFICE COPY

N68°22'30"W 1346.62'

N84°08'30"W 243.3'

110.65'  
550°35'30"W 152'  
S85°54'30"W

- - Iron Cors fd
  - - Iron Cors set
  - - stone cor fd.
- Scale 1"=100

I certify this survey to be  
correct to the best of my knowledge.

Completed 7-10-66

Ray W. Gasbarre  
Ray W. Gasbarre P.S. 4153  
Engineering Assoc.  
P.O. Box 157 Wooster, Ohio

261