

# Mechanic Township S.E. Qtr. Section 11 T-8 N; R-7 W Holmes County, Ohio

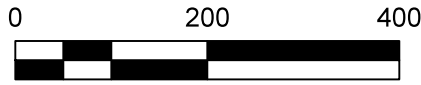
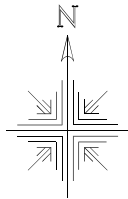
**REFERENCES:**

Deeds as shown

- Plat Vol. 19 Page 2646
- Plat Vol. 19 Page 3849
- Plat Vol. 02 Page 0018A
- Plat Vol. 03 Page 0064B
- Plat Vol. 12 Page 872

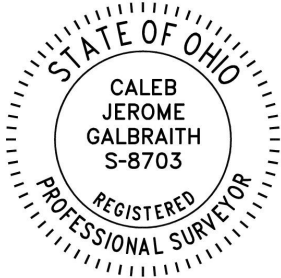
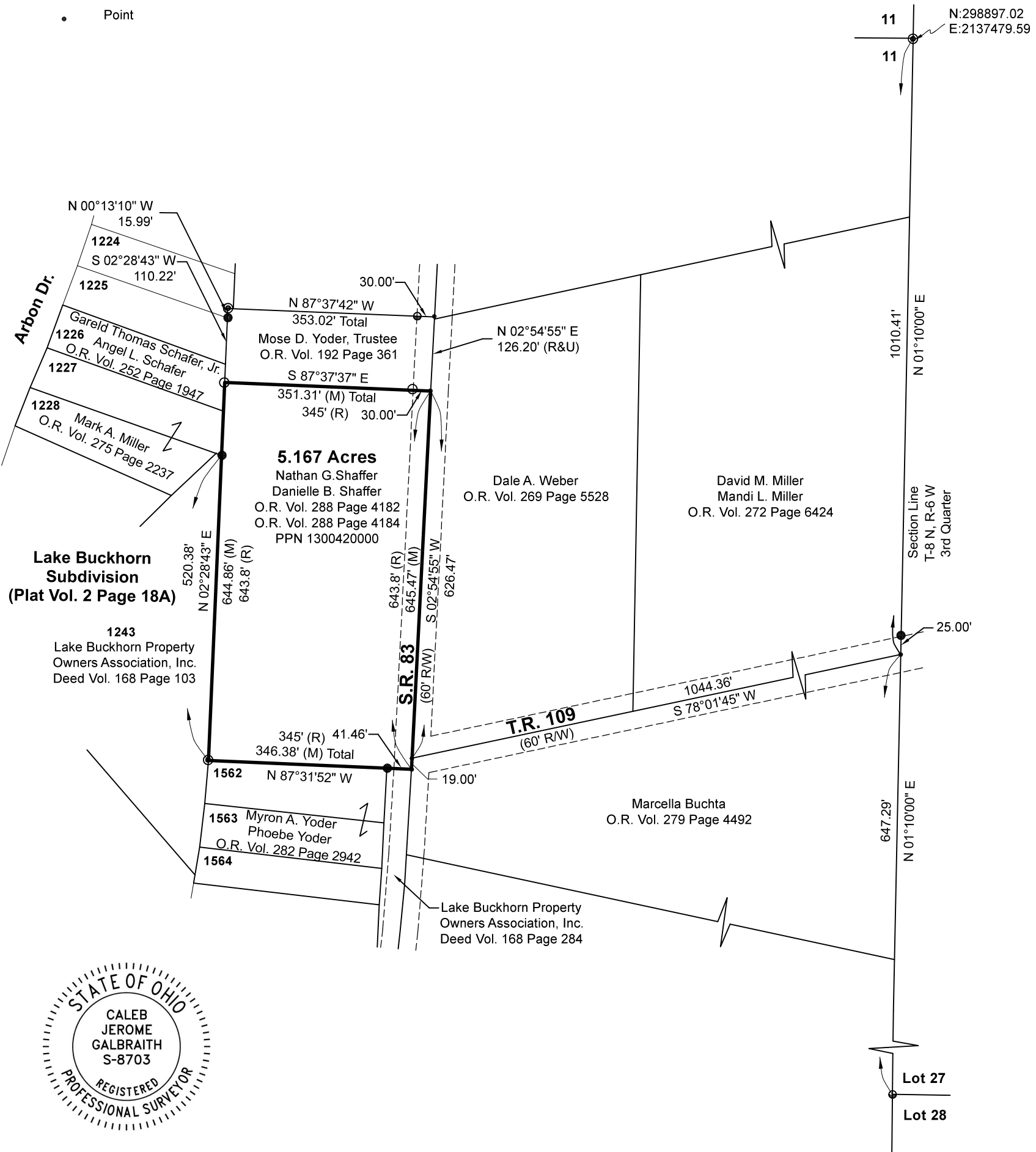
Basis of Bearing from Ohio State Plane Coordinate System, North Zone, NAD 83 (2011). Distances shown hereon are ground distances. To obtain grid distances multiply distances by scale factor of 0.999959651.

SURVEYED FOR: Nathan Shaffer



Scale 1"=200'

- 5/8" Rebar Found unless noted
- 1/2" Pipe Found
- ⊙ 2" Conc. Mon. Found
- 5/8" Capped Pin Set "Galbraith-8703"
- Point



I certify this survey to be correct to the best of my knowledge.

Caleb Jerome Galbraith P.S. 8703  
 Date: April 15, 2024  
 Job ID: 5824-H23  
 Pioneer Surveying & Services, LLC.  
 5434 Township Road 377  
 Millersburg, Ohio 44654  
 Phone: 330-231-0497  
 Email: caleb@pioneersurveyingandservices.com

