

**Mechanic Township
S.E. Qtr. Section 2
T-8 N; R-7 W
Holmes County, Ohio**

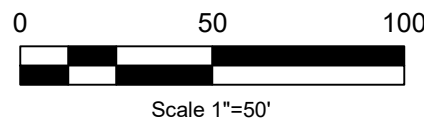
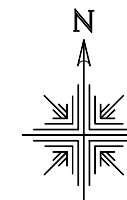
SURVEYED FOR: Bonnie Hershberger

REFERENCES:

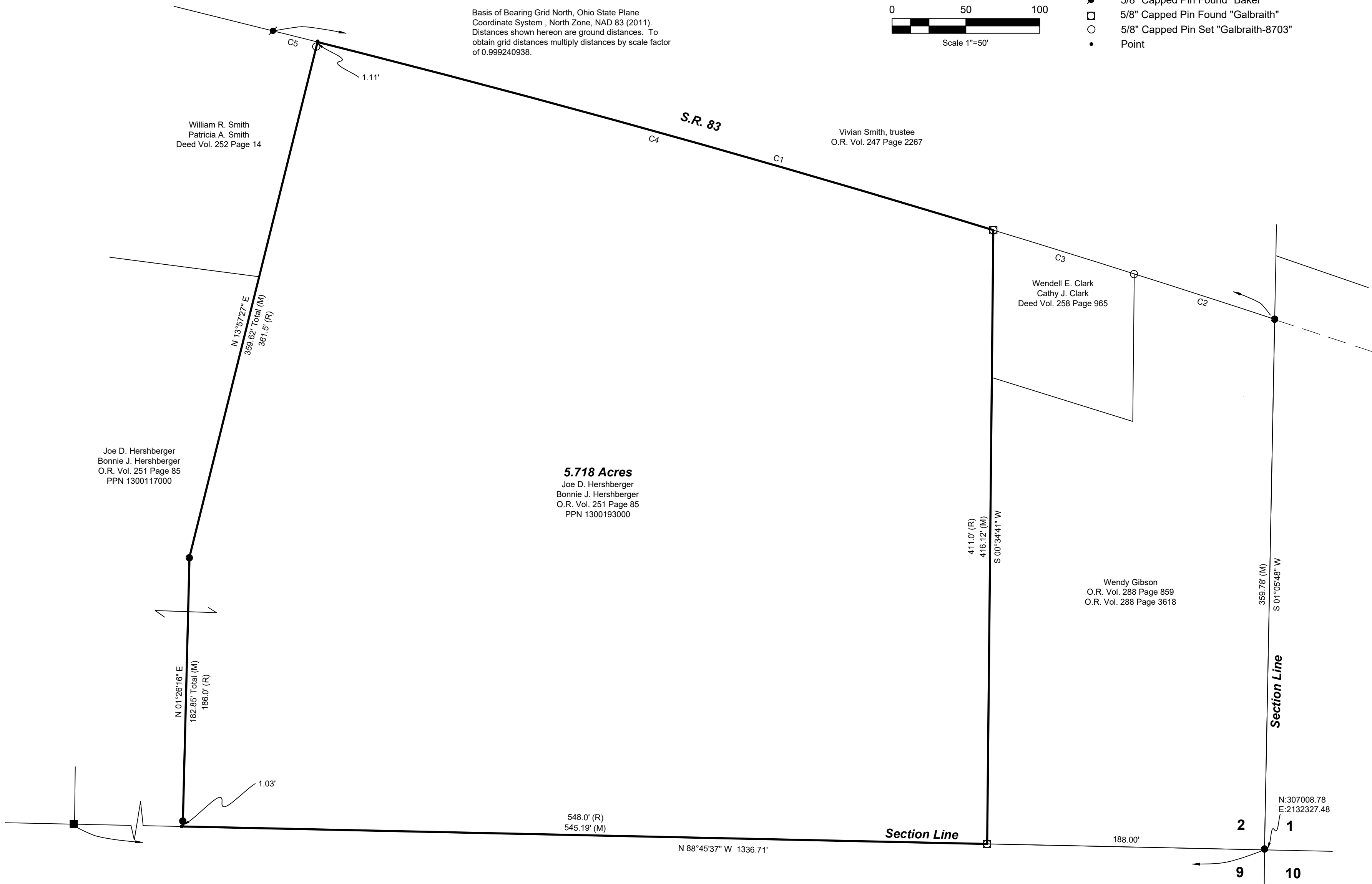
Deeds as shown

- Plat Vol. 16 Page 981
- Plat Vol. 2 Page 336
- Plat Vol. 19 Page 2467
- Plat Vol. 12 Page 693
- Plat Vol. 18 Page 833
- Plat Vol. 19 Page 5228

Basis of Bearing Grid North, Ohio State Plane Coordinate System, North Zone, NAD 83 (2011). Distances shown hereon are ground distances. To obtain grid distances multiply distances by scale factor of 0.999240938.



- Stone Found
- 5/8" Rebar Found
- 5/8" Capped Pin Found "Baker"
- 5/8" Capped Pin Found "Galbraith"
- 5/8" Capped Pin Set "Galbraith-8703"
- Point



5.718 Acres
Joe D. Hershberger
Bonnie J. Hershberger
O.R. Vol. 251 Page 85
PPN 1300193000

CURVE	RADIUS	ARC LENGTH	CHORD LENGTH	CHORD BEARING	DELTA ANGLE
C1	9510.00'	706.31'	706.15'	N 73°55'59" W	4°15'19"
C2	9510.00'	100.00'	100.00'	N 72°06'24" W	0°36'09"
C3	9510.00'	100.00'	100.00'	N 72°42'32" W	0°36'09"
C4	9510.00'	475.40'	475.35'	S 74°26'33" E	2°51'51"
C5	9510.00'	30.91'	30.91'	S 75°58'03" E	0°11'11"

Pioneer Surveying & Services, LLC.
5434 Township Road 377
Millersburg, Ohio 44654
Phone: 330-231-0497
Email: caleb@pioneersurveyingandservices.com

I certify this survey to be correct to the best of my knowledge.

Caleb Galbraith

Caleb Jerome Galbraith P.S. 8703
Date: June 24, 2024
Job ID: 9724

