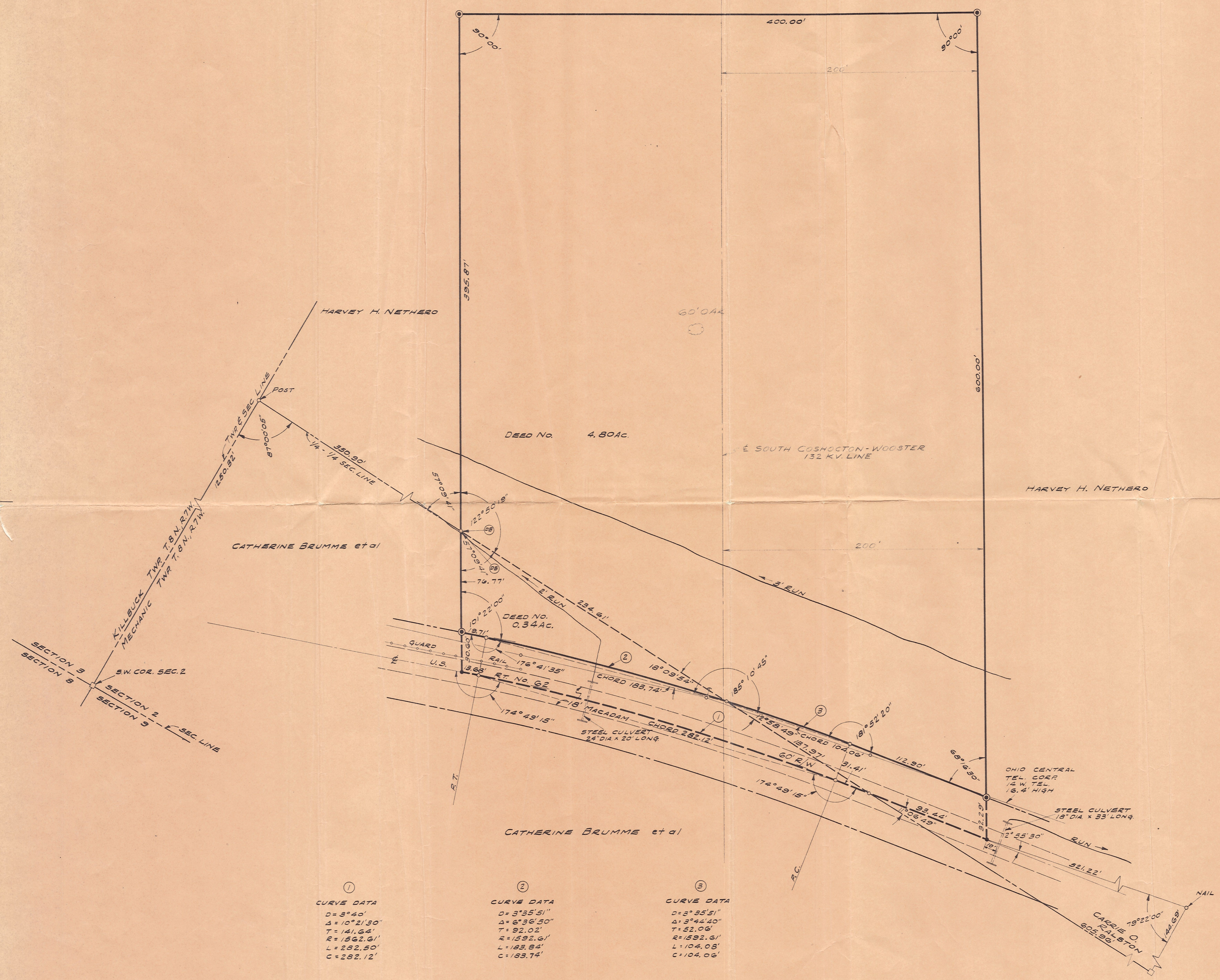
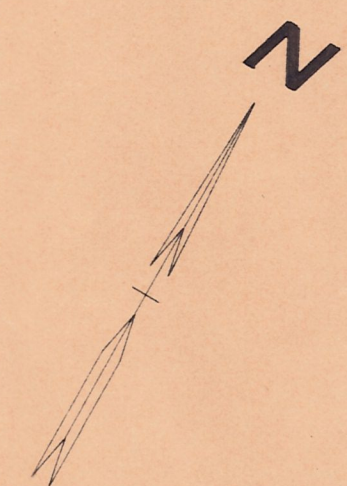


STATE OF OHIO  
 HOLMES COUNTY  
 MECHANIC TWP  
 SECTION 2  
 T. 8 N., R. 7 W.  
 U.S. MILITARY SURVEY



①	②	③
CURVE DATA	CURVE DATA	CURVE DATA
D=3°40'	D=3°35'51"	D=3°35'51"
Δ=10°21'30"	Δ=6°36'50"	Δ=3°44'40"
T=141.64'	T=92.02'	T=52.06'
R=1562.61'	R=1592.61'	R=1592.61'
L=282.50'	L=183.84'	L=104.08'
C=282.12'	C=183.74'	C=104.08'

- ⊙ DEED BEGINNING
- IRON PIN
- CORNER UNMARKED
- STANDARD MONUMENT
- STONE

MAP OFFICE COPY

OHIO POWER CO.	
PLAT SOUTH MILLERSBURG STATION SITE	
SCALE 1"=40'	DATE 5-28-56
DRAWN W.N.K.	CHECKED E.C.F.
TRACED do	DRAWER 4
APPROVED <i>(Signature)</i>	
1-133	

DEED NO. 4.80 AC.  
 DEED NO. 0.34 AC.

SURVEYED MAY 10, 1956. F.B.#2250 PP 31 TO 35 INCL & R 39.