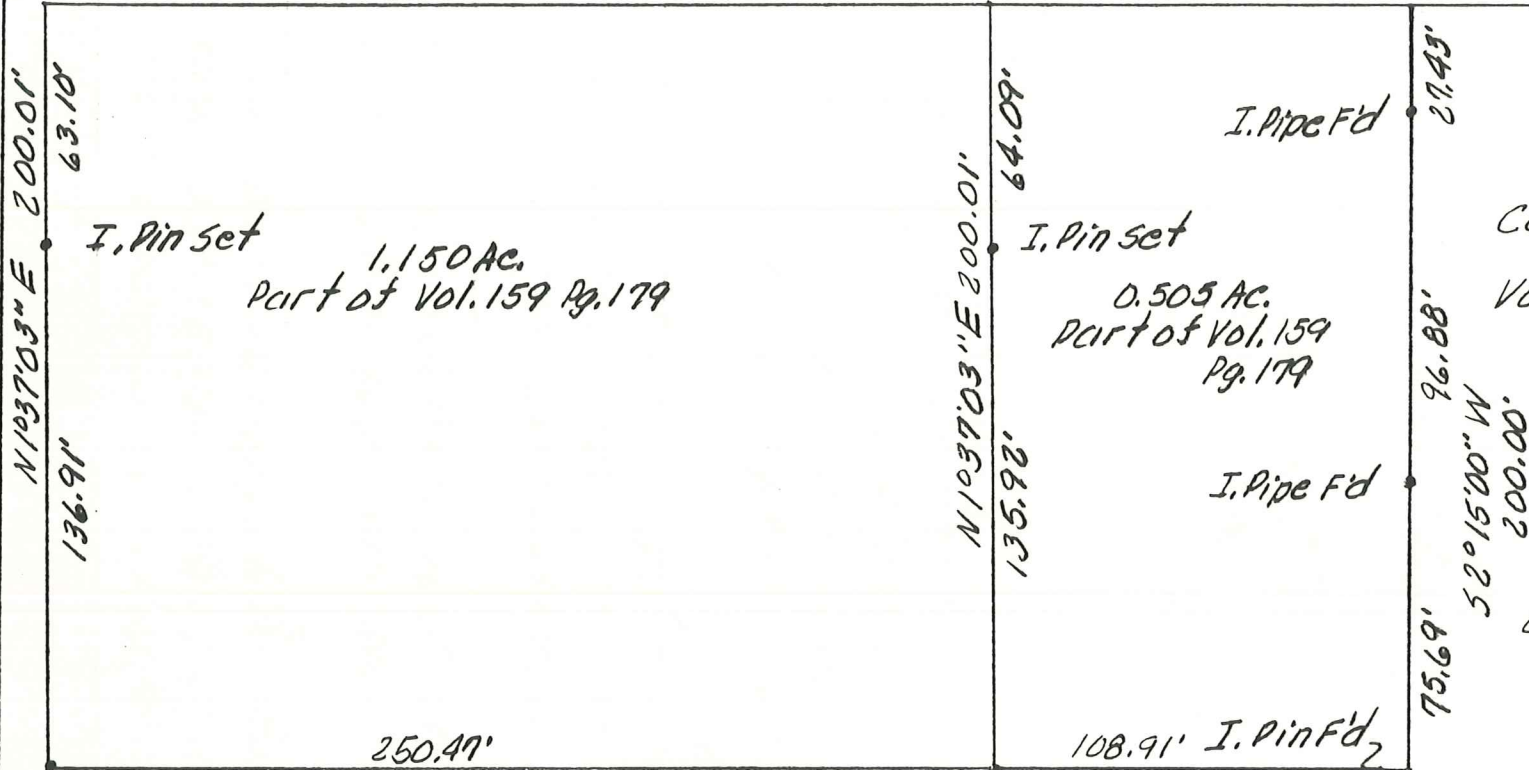


Andy N. & Verla Rober
Vol. 237 Pg. 603

Approximate center
N87°45'00"W C.R. 59
Sec. 18 Sec. 19



143.70'
P.B. 10 Pg. 438
P.B. 4 Pg. 75

P.B. 10 Pg. 438
109.20'
N.E. crnr
Sec. 23, T8N,
R6W, of
Mechanic
Twp., Hol. Co.,
OHIO

Cemetery
.407 Ac.
Vol. 228 Pg. 6

MAP OFFICE COPY

1.16 Ac.
Leroy R. & Chris Rober
Vol. 225 Pg. 636

PLAT OF A SURVEY FOR
MECHANIC TOWNSHIP
TRUSTEES
Grantees
Known as part of N.E. 1/4 of
Sec. 23, T8N, R6W, of Mechanic
Twp., Hol. Co., Ohio.

Robert L. Kasner P.S. 5193
P.E. 28820
2126190

I. Pin Set

587°45'00"E I. Pin Set

Homer J. & Nadine Lowe
Vol. 159 Pg. 179

