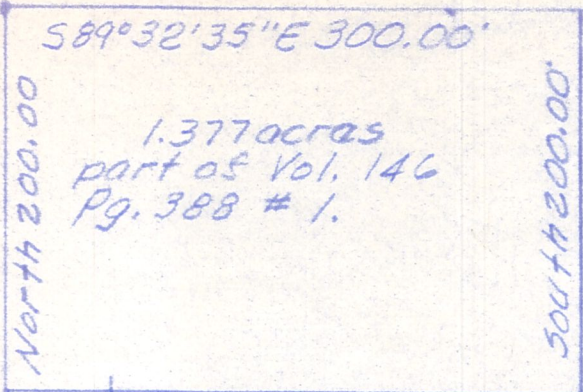


I.P. at N.W. crnr E 1/2 N.W. 1/4 S20 T8N R6W  
250.84 + 1.42' I.P.



1.377 acres  
part of Vol. 146  
Pg. 388 # 1.

T.R. 99

Known as part of E. 1/2 N.W. 1/4  
S20, T8N, R6W of Mechanic Twp.,  
Hol. Co., Ohio.

Beginning at a iron pin in T.R.  
99 at N.W. crnr E. 1/2 N.W. 1/4 S20;  
thence with the N. line thereof  
589°32'35\"/>

thence  
leaving said N. line and T.R. 99 South  
200.00' to a point; thence N89°32'  
35\"/>

Part of Vol. 146 Pg. 388 Tract 1.  
Survey and description by Robert L. Kasner  
P.S. 5193, P.E. 28820.

N89°32'35\"/>

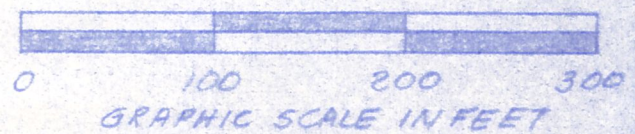
526°42'5\"/>

North 426.87'



I.P. N81°40'55\"/>

I.P.



PLAT OF A SURVEY FOR  
HENRY C. YODER  
Grantor

Part of E. 1/2 N.W. 1/4 S20 T8N R6W  
Mech. Twp., Hol. Co., Ohio

8/8/78

MAP OFFICE COPY