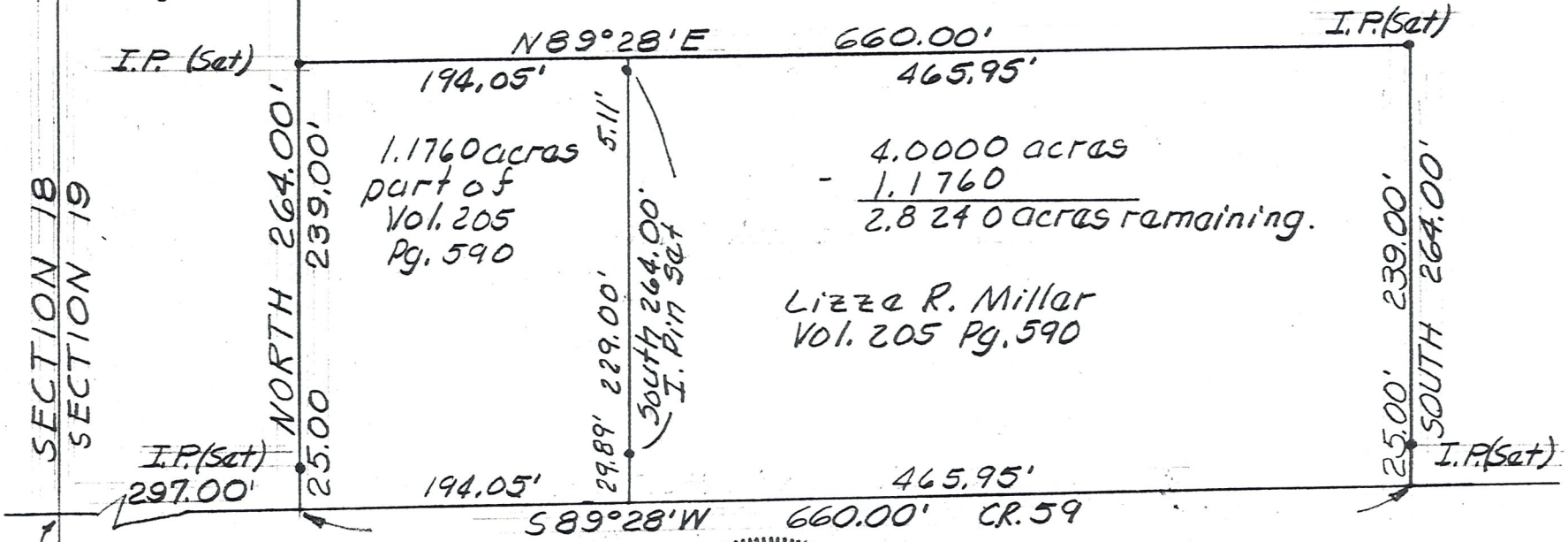


Lands of Eli D. & Emma Yoder
Vol. 154 Pg. 16

Vol. 184
Pg. 321



SECTION 18
SECTION 19

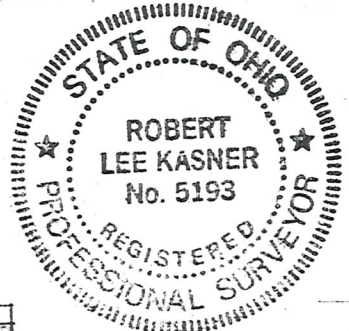
1.1760 acres
part of
Vol. 205
Pg. 590

4.0000 acres
- 1.1760

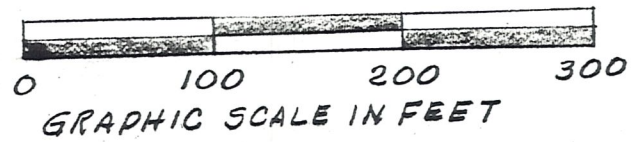
2.8240 acres remaining.

Lizzie R. Millar
Vol. 205 Pg. 590

S.W. CORN Sec. 19
T. 8 N., R. 6 W., of
Mech. Twp., Hol.
Co., Ohio



MAP OFFICE COPY



SITUATED IN MECHANIC TWP.
HOLMES COUNTY OHIO
Being a part of the West
Half of the SW Quarter of Sect. 19
Robert Lee Kasner
Robert Lee Kasner
Reg. Surv. No. 5193