

# MAP OFFICE COPY

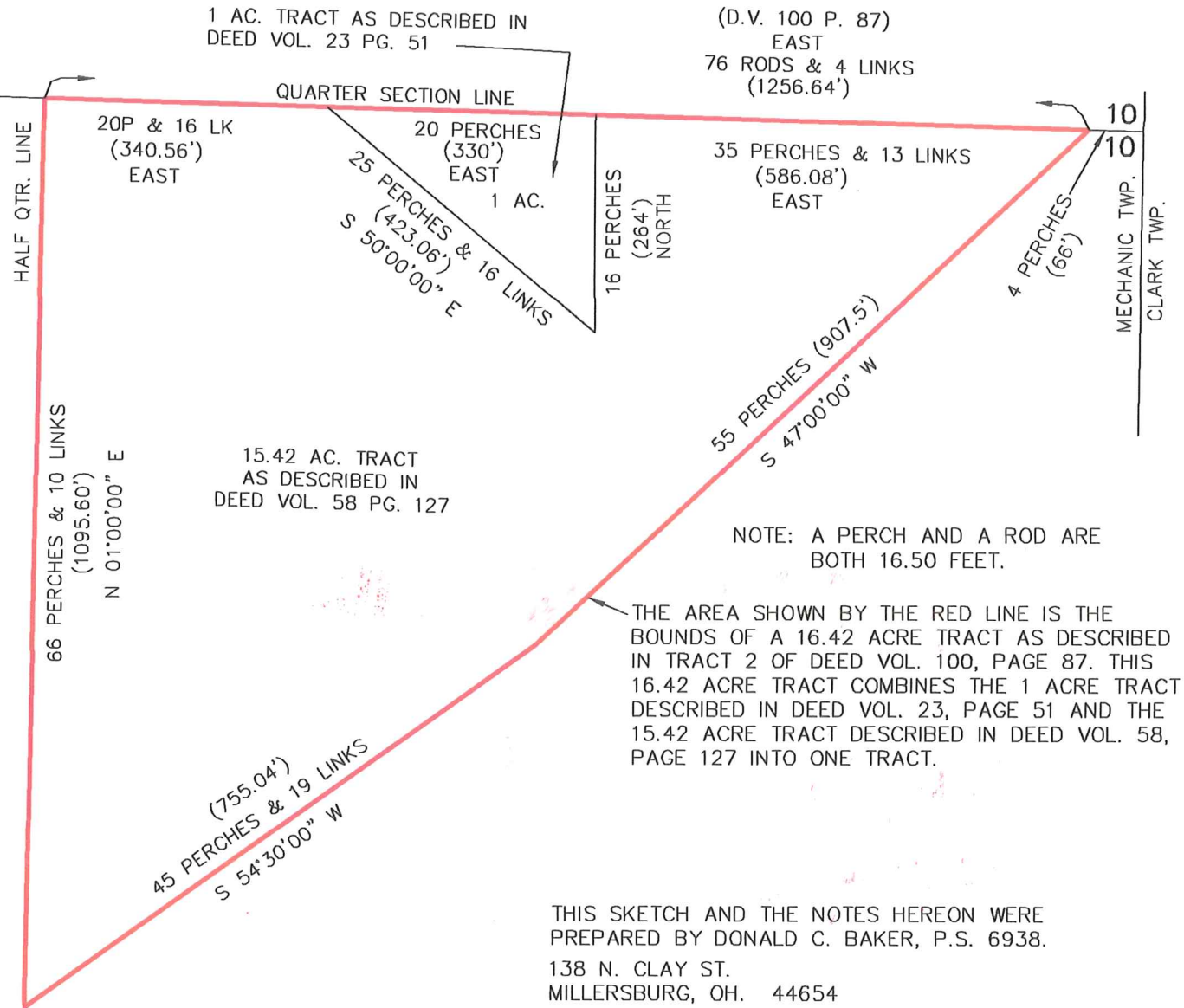
MECHANIC TWP.  
T-8 N; R-6 W  
S.E. QTR. SECTION 10  
HOLMES COUNTY, OHIO

10|10  
10|10

THE 1 AC. TRACT SHOWN HEREON IS INCORRECTLY DESCRIBED IN O.R. 206-2206 IN THAT IT CALLS OUT THE 1 AC. TRACT AS BEING A PART OF THE NORTHEAST QTR. OF SECTION 10. IT IS REALLY LOCATED IN THE SOUTHEAST QTR. OF SECTION 10 AND NO LONGER EXISTS AS IT WAS COMBINED WITH A 15.42 AC. TRACT TO CREATE A 16.42 AC. TRACT.

THE ERROR MIGHT HAVE OCCURRED IN DEED VOL. 50 PG. 351 WHERE THE 1 AC. DESCRIPTION SHOULD HAVE FOLLOWED THE 15.42 AC. DESCRIPTION WHICH IS LOCATED IN THE SOUTHEAST QTR. OF SECTION 10 RATHER THAN FOLLOW THE 54.5 AC. TRACT WHICH IS LOCATED IN THE NORTHEAST QUARTER OF SECTION 10. THE 1 AC. DESCRIPTION REFERS TO THE LOCATION AS THE (SAID QUARTER SECTION). IF THE 1 AC. TRACT HAD FOLLOWED THE 15.42 AC. TRACT THEN THE REFERENCES OF (SAID QUARTER SECTION) WOULD HAVE CORRECTLY REFERRED TO THE SOUTHEAST QUARTER.

THIS ALSO MATCHES DEED VOL. 23 PG. 51 WHICH CALLS OUT THIS 1 AC. TRACT AS BEING IN THE SOUTHEAST QTR. OF SECTION 10. ALSO NOTICE HOW THE BEARINGS AND DISTANCES OF THE 1 AC. TRACT AND THE 15.42 AC. TRACT MATCH PERFECTLY.



THIS SKETCH AND THE NOTES HEREON WERE PREPARED BY DONALD C. BAKER, P.S. 6938.  
138 N. CLAY ST.  
MILLERSBURG, OH. 44654

SEPT. 4, 2009