

Ruth E. Miller

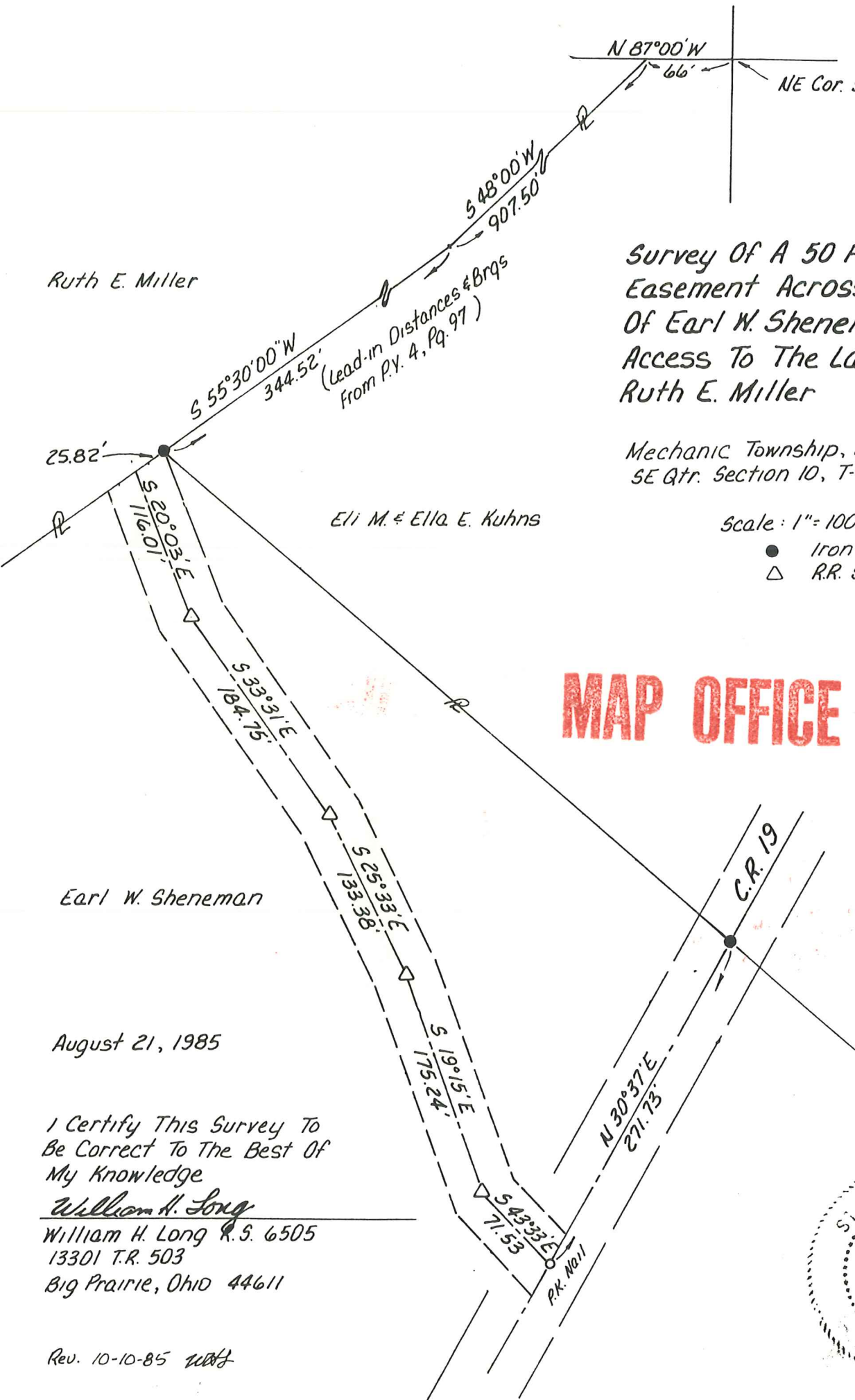
Survey Of A 50 Foot Wide Easement Across The Land Of Earl W. Sheneman For Access To The Land Of Ruth E. Miller

Mechanic Township, Holmes County SE Qtr. Section 10, T-8N, R-6W

Scale: 1" = 100'  
● Iron Pin Found  
△ R.R. Spike Set

Eli M. & Ella E. Kuhns

**MAP OFFICE COPY**



Earl W. Sheneman

August 21, 1985

I Certify This Survey To Be Correct To The Best Of My Knowledge

William H. Long  
William H. Long R.S. 6505  
13301 T.R. 503  
Big Prairie, Ohio 44611

Rev. 10-10-85 *WHL*

